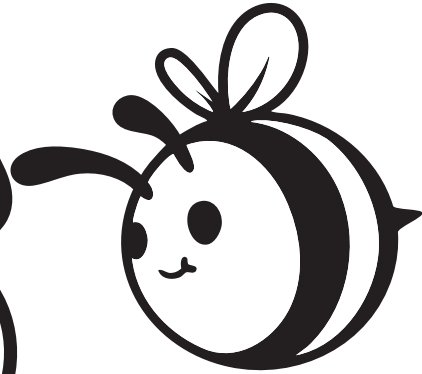
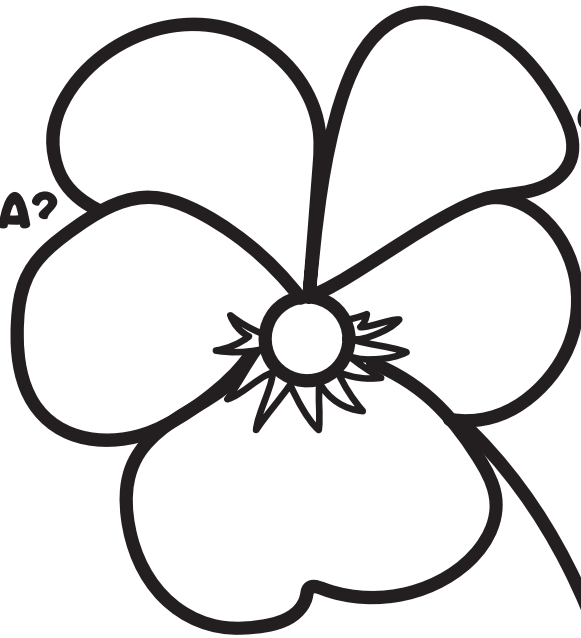


# KAKWITÉ·NE

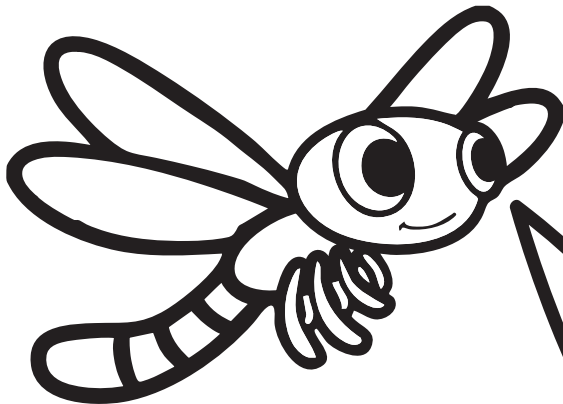
spring goo-kwee-day-nay

**OTSÍ·TSYA?**  
flower oh-gee-juh



**tsinuhnéhklis**  
bee gee-new-neg-liss

**o?hista?**  
stem oh-neat-sta



**tsi?kenawalistn**  
dragonfly gee-gain-a-wall-eesta

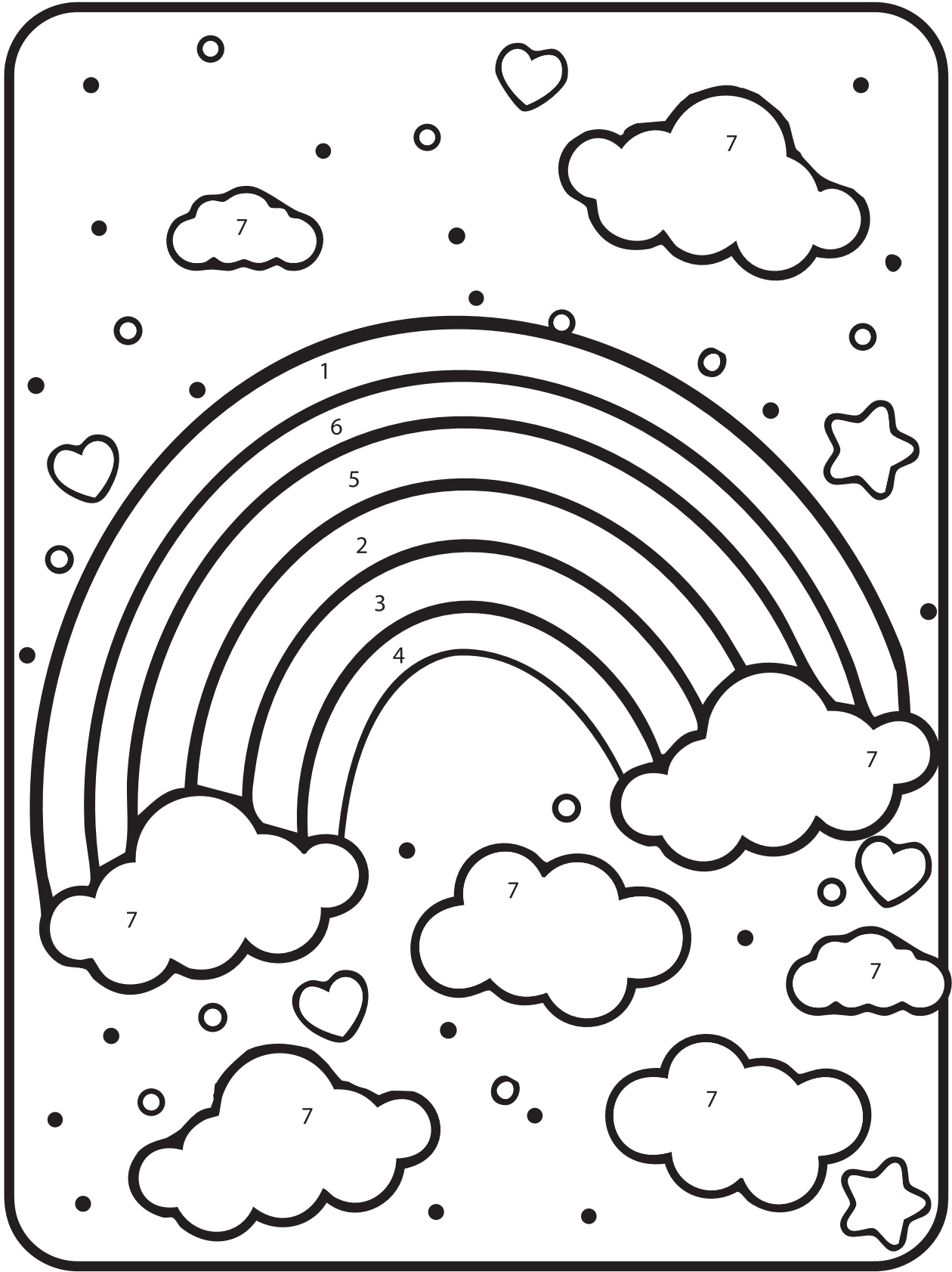
**óhlahte?**  
leaf o-uh-foe-day



**onékli?**  
grass oh-nay-gee

# COLOR BY NUMBER

Color the rainbow based on the Oneida language words shown.

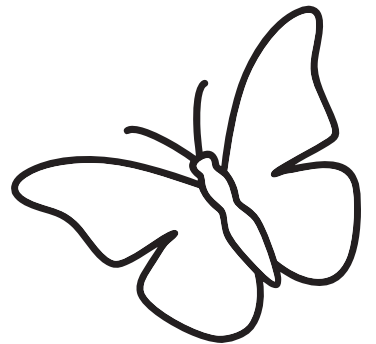




# MAZE

start

done

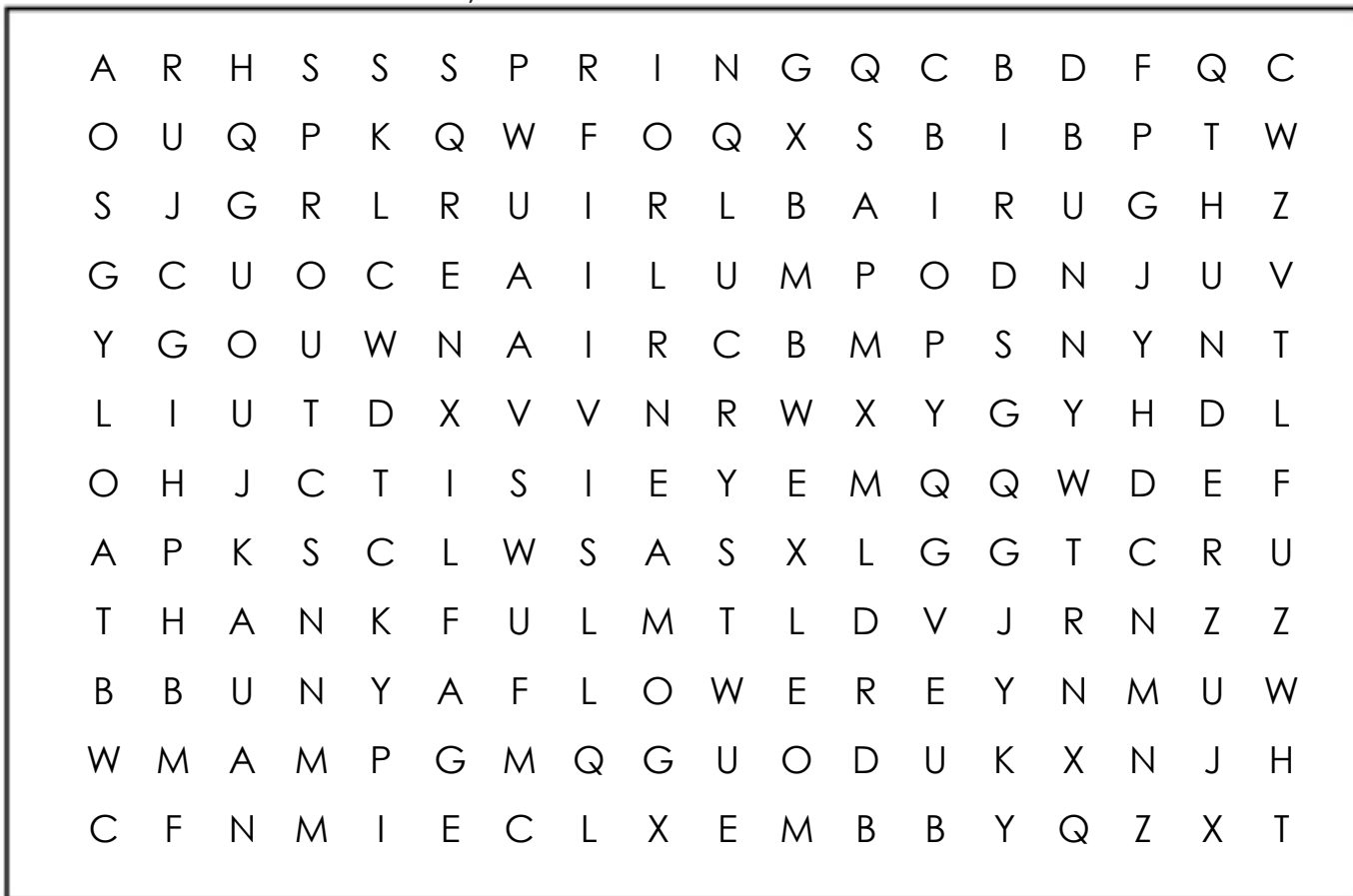


# OTSI·TSYA?

flower oh-gee-juh

# SPRINGTIME WORD SEARCH

FIND THE WORDS IN THE PUZZLE, THEN LOOK THEM UP IN ONEIDA AND WRITE THEM ON THE LINE.



THUNDER  
SPROUT  
FLOWER  
LEAVES

BIRDS  
BUNNY  
RAIN  
SAP

THANKFUL  
SQUIRREL  
SPRING

**Write the Oneida Translation:** <https://www.uwgb.edu/oneida/>

thunder \_\_\_\_\_

sprout \_\_\_\_\_

flower \_\_\_\_\_

leaves \_\_\_\_\_

bird \_\_\_\_\_

rabbit \_\_\_\_\_

rain \_\_\_\_\_

sap \_\_\_\_\_

thank \_\_\_\_\_

squirrel \_\_\_\_\_

# SPRING THINGS

Rewrite the Oneida word, and then draw a line to the matching image

kakwité·ne ●

---

otsí·tsya? ●

---

o?nísta? ●

---

tsinuhnéhklis ●

---

tsi?kenawali'sta ●

---

ónlahte? ●

---

onékli? ●

---

kahsakayu·tése? ●

---

óhute? ●

---

otsi?táha? ●

---

tshuhkalo·lá ●

---

yokno·lú ●

---

tyohnekahlíu ●

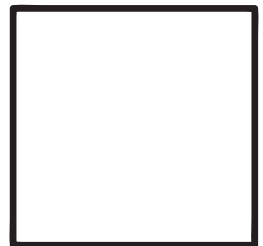
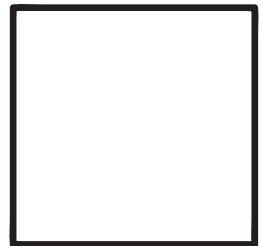
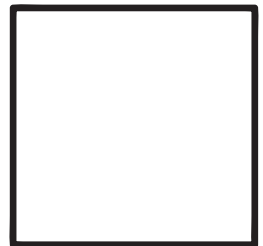
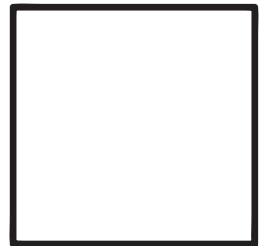
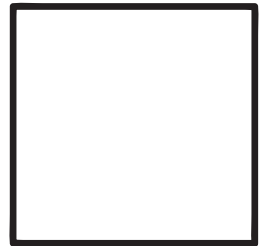
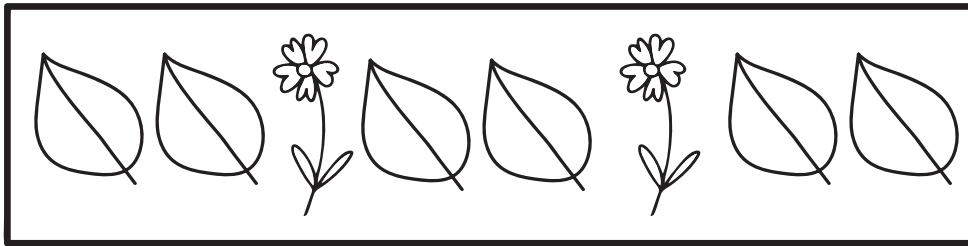
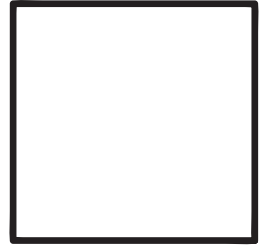
---

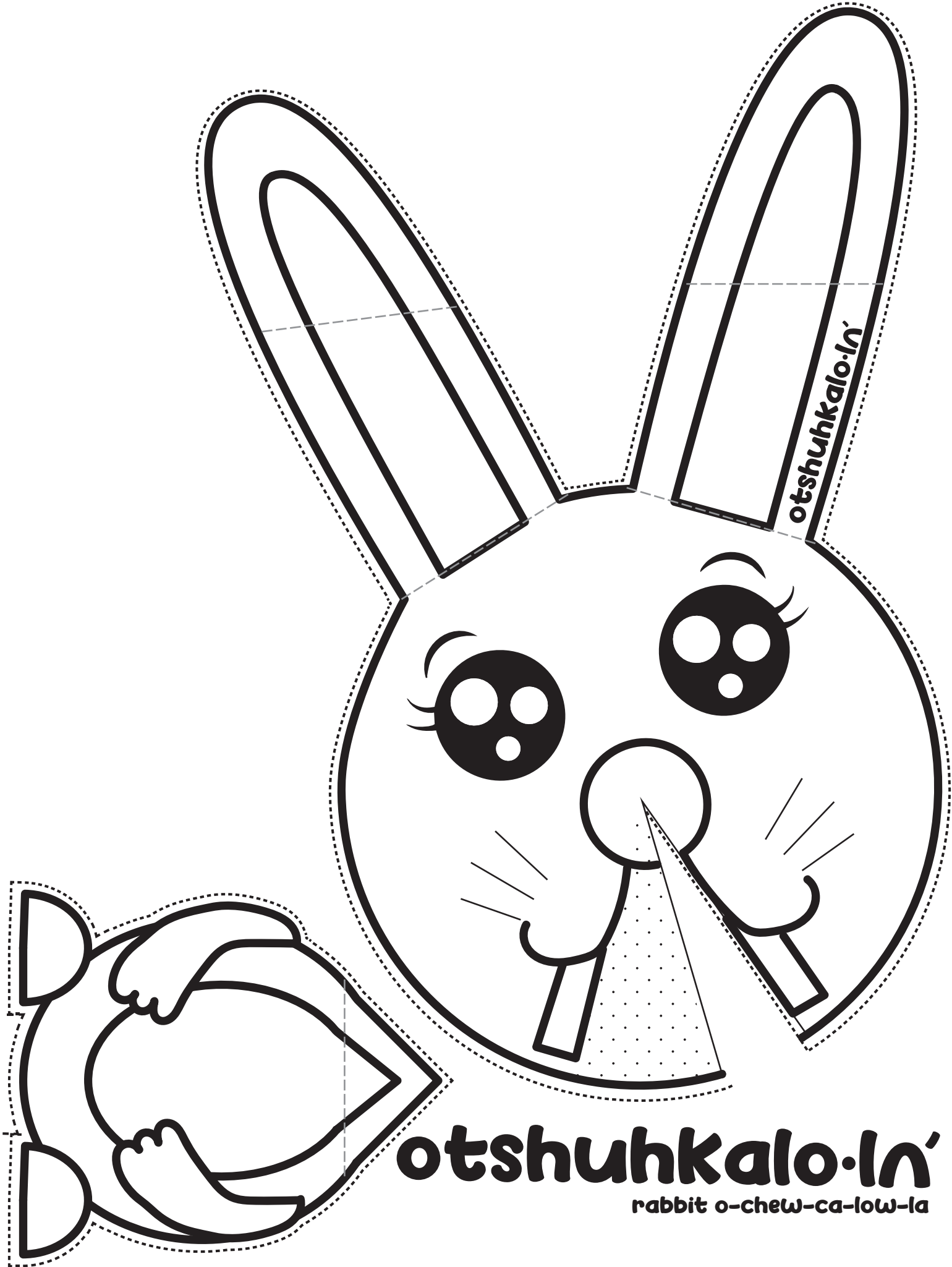
tsyokwiln·tu ●

---



# WHAT COMES NEXT?





otshuhkalo·ln'

**otshuhkalo·ln'**  
rabbit o-chew-ca-low-la

**With special thanks to the Oneida Cultural Heritage Team!  
DD, DD, BB, YM, TD, ED, KS, NM, RC, KN, you make it all possible.**



A good mind. A good heart. A strong fire.



**Created to promote Oneida symbolism  
and vocabulary in public spaces,  
and to support interculturism, dialogue  
and interaction between cultures.**