

Oneida Comprehensive Health Division Community Meeting Integrated Campus & Updates

July 23rd, 2024



ONEIDA

Presentation QR Code



A good mind. A good heart. A strong fire.



Housekeeping

Meeting Format

Streamed & Recorded

Restroom Locations

Light Meal

Staff Available to Assist

Program Leadership Available Post-Meeting

A good mind. A good heart. A strong fire.



Vision: A Progressive Sustainable Health System That Promotes Tsi?niyukwalihot^ (Our Ways)

Mission: We Provide the Highest Quality, Holistic Health Care to Ensure the Wellness for OUR Oneida Community

Values:

Responsive Leadership
Communication
Trust is the Foundation

Safety
Culturally Sensitive
Respect



Administration

Health Board Recommendation
Community Meetings
Patient Feedback

Sid White, DPT, MPT, MBA

Assistant Division Director

920.869.6554

swhite1@oneidanation.org



ONEIDA



Pharmacy

Curbside Pick-Up Project

Dennis Reckelberg, PharmD

Pharmacy Director

920.869.4878

dreckelb@oneidanation.org





Optical

Workflows

Pre-Test Room

Patient Account Representative

Lisa Slaby, OD

Optometry Director

920.869.4948

lslaby@oneidanation.org



ONEIDA



Laboratory Remodel

Carrie Blohowiak, BS, MLS(ASCP)

Laboratory Director

920.869.4965

cblohowi@oneidanation.org





Radiology

Remodel

Courtney Georgia, BS, RT(R)(M)

Radiology/Mammography Supervisor

920.869.4998

cgeorgia@oneidanation.org



ONEIDA



Dental Clinic

Scheduling Workflow
'Immediate Opening' Pilot Project

Yvonne White, DDS, RDH

Dental Director

920.869.2711

ywhite@oneidanation.org





Community Health

Home Health Services

Brenda Haen, BSN, RN

Community Health Manager

920.869.4897

bhaen@oneidanation.org





Medical

Provider Recruitment

Karen Lane, DO, FAAP

Medical Director

920.869.2711

klane@oneidanation.org





Introduction

Debra J. Danforth, RN, BSN

Division Director

920.869.2711, ext. 4807

ddanfort@oneidanation.org



ONEIDA

Summer Intern Recognition

Division Commitment to Learning & Development

Opportunity As a Teaching Facility

Introduction:

- **Name**
- **School**
- **Department**
- **Major/Future Plans**

What Are We Asking of the GTC?

“Approval of CDC# 09-011 OCHD Integrated Campus Project Loan”

- **Division Will Pay Over 20-Year Period**
- **Combination of Insurance Payments & Section 105 (l) Funds**
- **Funds ALREADY Budgeted & Received Annually**

Purpose of Integrated Campus

Meet Overall Health Needs of Community

Improve Patient Access to Care

Creating Culture of Empathy

Enhance Population Outcomes

Diversify Services Offered

A good mind. A good heart. A strong fire.



Purpose of Integrated Campus

Unify Under One Campus Allows Health System to:

- **Align Team & Resources**
- **Provide the Best Possible Care**
- **Best Experience for OUR Patients & Community**
- **Continued Provision of State-of-the-Art Care**



**Take Full Advantage of Home-Grown Talent,
Higher Education Fund Graduates & Employee Advancement**





ONEIDA



ONEIDA



Director, Secretary, Four Community Health Reps, RN, & LPN



1978 Oneida Health Clinic
45 Employees



ONEIDA



2000 Oneida Community Health Center Footprint



ONEIDA



2002 Oneida Community Health Center Campus
180 Employees
175,000 Patient Visits Per Year



ONEIDA



2024 Oneida Community Health Center Campus
378 Employees
375,000 Patient Visits Per Year



ONEIDA

Project Description

Proposed Building Expansion:

- 148,500 Square Feet
- Includes 51,000 Square Feet Second Story “White Box” for Future Growth

Existing Facility

- 44,000 Square Feet Interior Renovations



Existing OCHC Facility

Highway 172

S. Overland Rd.

Minoka Hill Dr.



Existing OCHC Facility

Fire lane to wrap perimeter of future building if adopted.





MEDICAL CLINIC
19,000 SF

HEALTH
21,625 SF

RADIOLOGY
3,900 SF

LAB
3,700 SF

PUBLIC TLT
1,500 SF

PAR
1,300 SF

POTENTIAL PHARM EXPANSION
3,100 SF

PHARM
3,100 SF

SAFE ROOM
5,000 SF

DENTAL
7,700 SF

CONF
1,300 SF

CONF
1,300 SF

PUBLIC TLT
1,000 SF

PHYSICAL REHAB
5,000 SF

WIC
2,800 SF

MED RECORDS STAFF OFFICES
4,000 SF

MIS

SUPPORT SERVICES

MAINTENANCE

STAFF LOCKERS
1,200 SF

WORKOUT CTR
2,800 SF

OPTICAL
6,000 SF

COMMUNITY HEALTH
6,700 SF

BILLING
1,300 SF

HEALTH PRO
1,700 SF

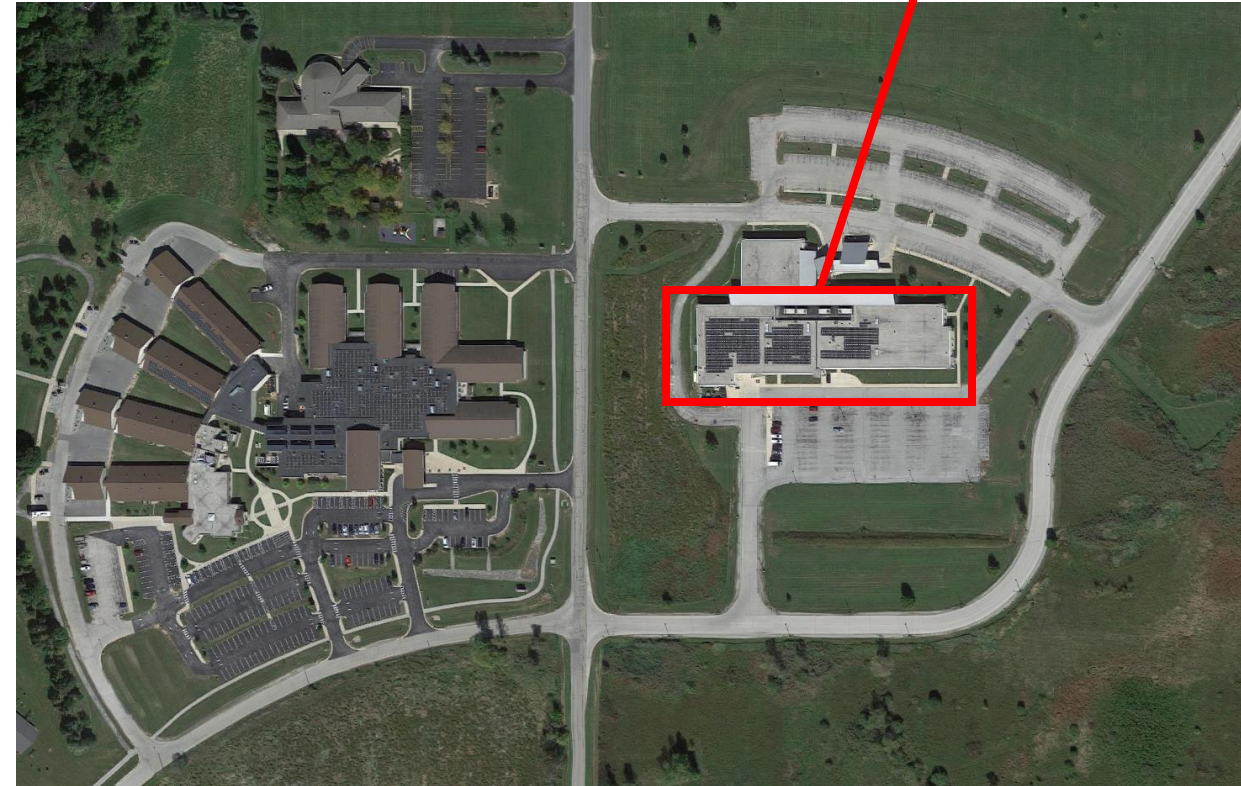
EMPLOYEE HEALTH NURSING
6,000 SF

Proposed Location

Current:

Oneida Community Health Center (OCHC) Campus

525 Airport Drive
Oneida, WI 54155



Existing OCHC Facility

A good mind. A good heart. A strong fire.



What is a 'White Box'?

A Space Reserved for
Future Growth That is
Tailored to Patient Needs



ONEIDA

IHS Compacts/Funding Agreements

Tribal Nations Assume Funding & Control Over Programs, Services, Functions, and Activities (PSFA)

Why Is This Impactful?

“Traditional Healing”

“Complementary & Alternative Medicine Services”



Economic Sustainability

Plan for Zero Dollar Tribal Contribution

Use Funds Allocated Exclusively for Health Care

IHS Funding Produces the Greatest Nation Flexibility

Maintains Funds for GTC Mandated Expenses

Social Sustainability

Needs: Current vs Future

- The Needs are Now!

Community Health & Well-Being

- Oneida Nation Membership

Meet Growth Trajectory & Projections

Environmental Sustainability

Renewable Energies – Solar Projects

Green Construction

Energy Efficient

Utilize Existing Structure

Nation's Ability to Repurpose Existing Buildings/Space

A good mind. A good heart. A strong fire.



Funding

**Goal: Zero Dollars of Tribal
Contribution to Project**

Funding Plan

Secure a Loan for Project

Use IHS 105(l) Annual Lease Funding

- **Make Annual Loan Payments**

USDA Loans

Community Facilities Direct Loan & Grant Program

- Wisconsin

Market: 3.500% for 3rd Quarter Fiscal Year 2024

- Effective April 1, 2024 – June 30, 2024



Power of Section 105(l) + Loans

Red Lake Band of Chippewa, Minnesota

Multiple Projects



Power of Section 105(l) + Loans
Yukon-Kuskokwim Health Corporation
\$165 Million Project

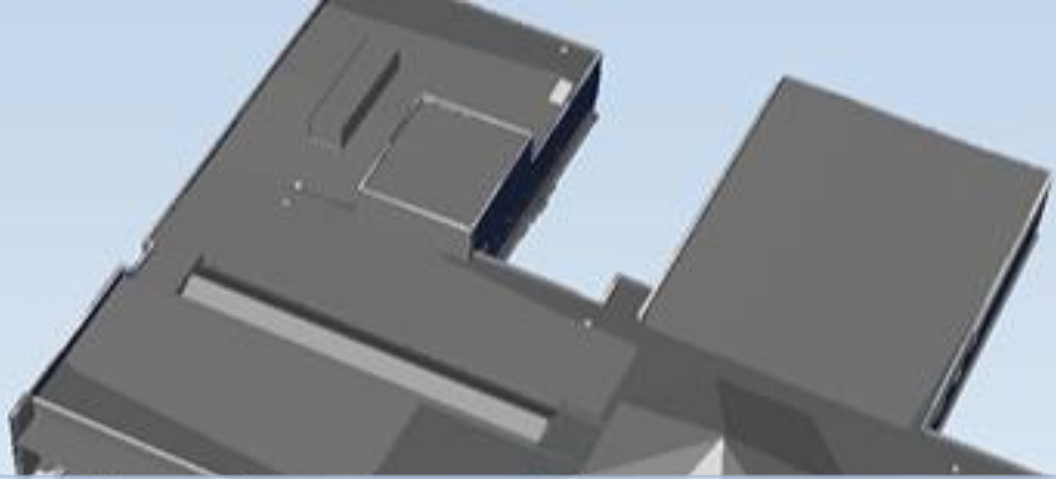


ONEIDA

Power of Section 105(l) + Loans
Pit River – Tribal Health Clinic Expansion
\$8,415,000 Project



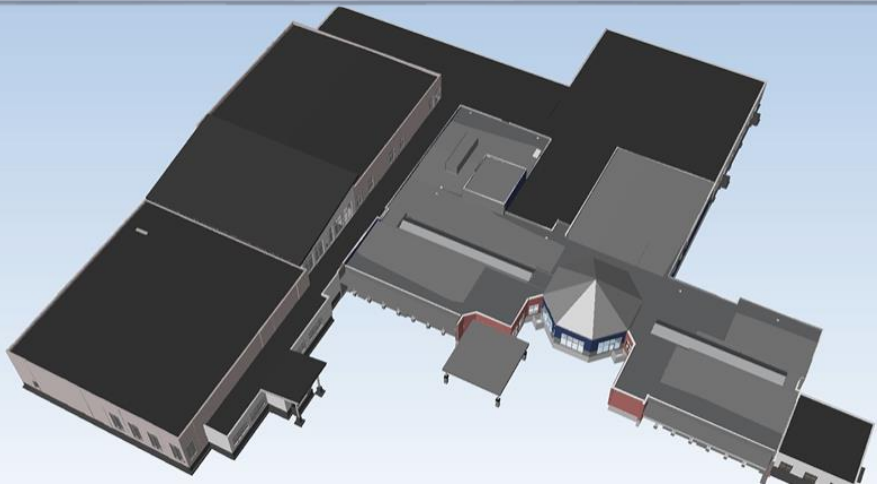
ONEIDA



Power of Section 105(l) + Loans

Bad River Health & Wellness Center

\$33 Million Project



BAD RIVER HEALTH
& WELLNESS CENTER



Power of Section 105(l) + Loans
Lac Courte Oreilles Health Center
\$44.3 Million Project



Project Impact

This Project Provides the Most Impact for the Largest Number of Oneida Nation Members with the Least Financial Impact on the Nation's Budget.

375,000 Patient Visits Per Year

A good mind. A good heart. A strong fire.



Five Principles Nation Building

Transformational Leadership

Strong Governing Systems

Cultural Relevancy

Strategic Outlook

Sovereignty

A good mind. A good heart. A strong fire.



Nation Building Themes

Use Relevant Data for Decision-Making

Integrate Oneida Values into our Governing Systems

Advance Community Engagement

Create Sustainable Community Economic Development

Strengthen Intergovernmental Strategies

A good mind. A good heart. A strong fire.



Approving the Project

Continued Evolution of Nation & Health Shared Legacies

Best Prepares Nation for the Future of Health

Empowers Employees & Patients for the Future

A good mind. A good heart. A strong fire.



Our Recommendation

Pursue Funding Project:

- **Section 105 (L) Lease**
- **USDA Community Facilities Direct Loan & Grant Program**
- **OCHD Incremental Savings Plan**
- **Third-Party (Insurance) Reimbursement**
- **New Market Tax Credits**

What Are We Asking of the GTC?

“Approval of CDC# 09-011 OCHD Integrated Campus Project Loan”

- **Division Will Pay Over 20-Year Period**
- **Combination of Insurance Payments & Section 105 (l) Funds**
- **Funds ALREADY Budgeted & Received Annually**



Yaw^ko

Questions, Request for Information, Comments:

Oneida Comprehensive Health Division - Administration

ohc_admin@oneidanation.org

920.869.2711, ext. 0