



Oneida Comprehensive Health Division
Project #09-011
OCHD Integrated Campus

June, 10th, 2024



ONEIDA



Introduction

Debra J. Danforth, RN, BSN

Division Director

920.869.2711, ext. 4807

ddanfort@oneidanation.org



ONEIDA



A good mind. A good heart. A strong fire.



Vision: A Progressive Sustainable Health System That Promotes Tsi?niyukwalihot^ (Our Ways)

Mission: We Provide the Highest Quality Care to Ensure Wellness for OUR Oneida Community

Values:

Responsive Leadership
Communication
Trust is the Foundation

Safety
Culturally Sensitive
Respect

Motion:

“Motion to Allow Oneida Comprehensive Health Division’s (OCHD) Non-Oneida Employees to Attend 6/10/24 General Tribal Council (GTC) Meeting Presentation for Department & Program Specific Questions.”

Current Projects

Pharmacy: Curbside Pick-Up Project

Optical: Second Pre-Test Room

Laboratory: Remodel

Dental: Scheduling Workflows

Current Projects

Health Board: Recommendation

Community Meetings & Patient Feedback

Medical: Provider Recruitment & Space

Home Health Agency

Purpose of Integrated Campus

Meet Overall Health Needs of Community

Improve Patient Access to Care

Creating Culture of Empathy

Enhance Population Outcomes

Diversify Services Offered

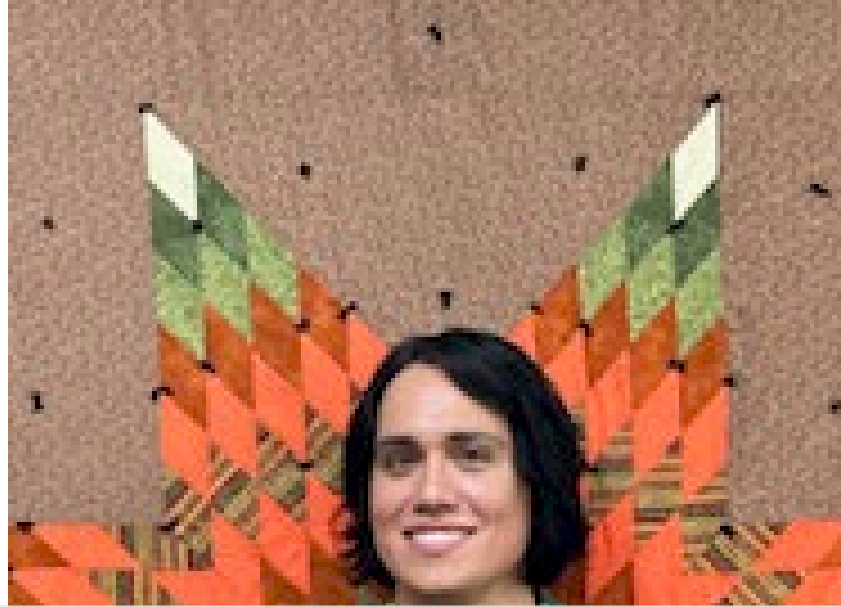
A good mind. A good heart. A strong fire.



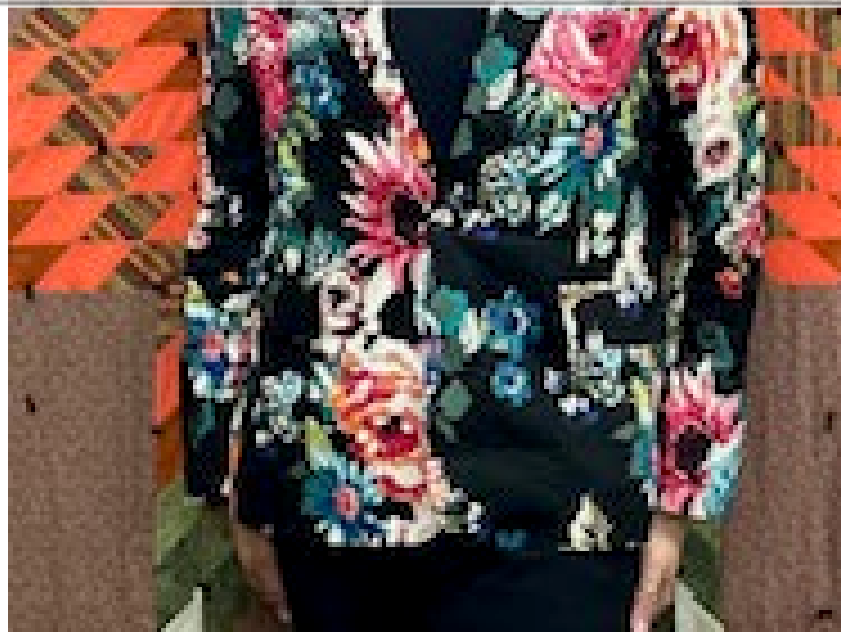
Purpose of Integrated Campus

Unify Under One Campus Allows Health System to:

- **Align Team and Resources**
- **Provide the Best Possible Care**
- **Best Experience for OUR Patients and Community**
- **Continued Provision of State-of-the-Art Care**



**Take Full Advantage of Home-Grown Talent,
Higher Education Fund Graduates & Employee Advancement**





ONEIDA NATION
MUSEUM ARCHIVES



ONEIDA



ONEIDA



Director, Secretary, Four Community Health Reps, RN, LPN

A photograph of the Oneida Health Clinic building, a long, single-story structure with a dark roof and light-colored walls. The building is surrounded by trees and a paved parking lot. Several cars are parked in the lot, including a red pickup truck in the foreground. The sky is blue with scattered white clouds. A semi-transparent purple banner is overlaid across the middle of the image, containing white text.

**1978 Oneida Health Clinic
45 Employees**



ONEIDA



2000 Oneida Community Health Center Footprint



ONEIDA



2002 Oneida Community Health Center Campus
180 Employees
175,000 Patient Visits Per Year



ONEIDA



2024 Oneida Community Health Center Campus
378 Employees
375,000 Patient Visits Per Year



ONEIDA

Project Description

Proposed Building Expansion:

- 148,500 square feet
- Includes 51,000 square feet Second Story “White Box” for Future Growth

Existing Facility

- 44,000 square feet interior renovations



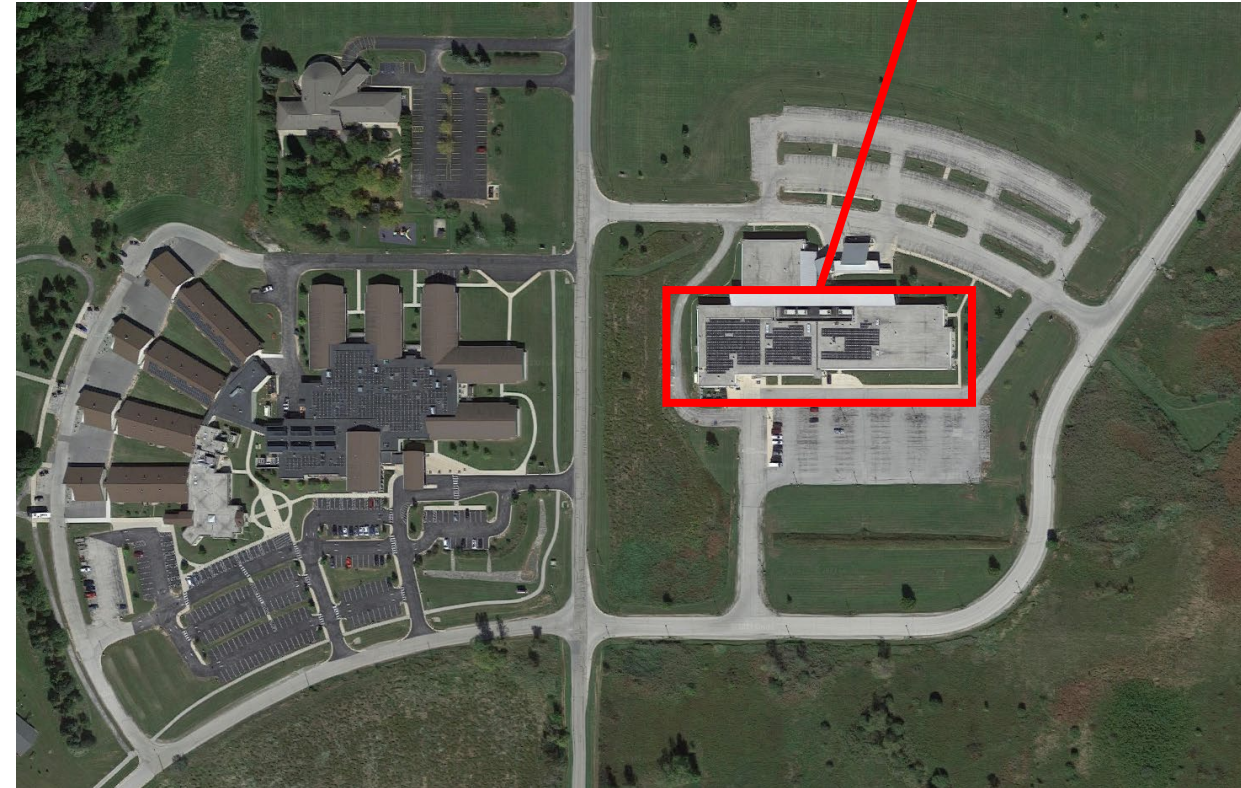
Existing OCHC Facility

Proposed Location

Current:

Oneida Community Health Center (OCHC) Campus

525 Airport Drive
Oneida, WI 54155



Existing OCHC Facility

A good mind. A good heart. A strong fire.



Highway 172

S. Overland Rd.

Minoka Hill Dr.

FUTURE
TRANSITIONAL RESIDENTIAL
DETOX TREATMENT FACILITY
22,000 SF

FACILITY
EXPANSION
SPACE
PTD
3,000 SF

ADMS
3,000 SF

MEDICAL CLINIC
10,000 SF

INDIVIDUAL
HEALTH
21,000 SF

PHARMACY
4,000 SF

LAB
3,700 SF

PUBLIC
TTL
1,000 SF

PHARMACY
3,000 SF

PHARM
3,000 SF

SAFETY ROOM
6,000 SF

DENTAL
7,700 SF

CCP
1,000 SF

CCP
1,000 SF

PUBLIC
TTL
1,000 SF

PATIENT
SERIES
6,000 SF

TRD
3,000 SF

RECEPTION
RECEPTION
4,000 SF

RECEPTION
RECEPTION
4,000 SF

OPTICAL
6,000 SF

FIELD
LAB
1,000 SF

EMPLOYEE
HEALTH
SERVICES
4,000 SF

RECEPTION
RECEPTION
4,000 SF

RECEPTION
RECEPTION
4,000 SF

COMMUNITY
HEALTH
6,700 SF

HEALTH
PRO
1,000 SF

EMPLOYEE
HEALTH
SERVICES
4,000 SF



Existing OCHC Facility



What is a 'White Box'?

**A Space Reserved for
Future Growth That is
Tailored to Patient Needs**



ONEIDA

IHS Compacts/Funding Agreements

Tribal Nations Assume Funding and Control Over Programs, Services, Functions, and Activities (PSFA)

Why Is This Impactful?

“Traditional Healing”

“Complementary and Alternative Medicine Services”



Economic Sustainability

Plan for Zero Dollar Tribal Contribution

Use Funds Allocated Exclusively for Health Care

IHS Funding Produces the Greatest Nation Flexibility

Maintains Funds for GTC Mandated Expenses

Social Sustainability

Needs: Current vs Future

- The Needs are Now!

Community Health & Well-Being

- Oneida Nation Membership

Meet Growth Trajectory & Projections

Environmental Sustainability

Renewable Energies – Solar Projects

Lean/Green Construction

Energy Efficient

Utilize Existing Structure

Nation's Ability to Repurpose Existing Buildings/Space

A good mind. A good heart. A strong fire.



Funding

**Goal: Zero Dollars of Tribal
Contribution to Project**

Funding Plan

Secure a Loan for Project

Use IHS 105(l) Annual Lease Funding to Make Loan Payments

What is a 105(l) lease?

105(l) is NOT a Traditional Lease:

- **Facility Cost Share Agreement**
- **IHS Reimburses Tribal Nation for Facility Space Used to Carry Out Programs, Services, Functions, or Activities (PSFAs) Program**
- **Statutory Requirement Under Federal Law - Indian Self Determination and Education Assistance Act (ISDEAA)**
- **Oneida Nation Entitled to 105(l) through IHS Compact & Funding Agreement under ISDEAA**
- **Nation Receives 105(l) Funds Annually with IHS Lease Agreements**

How 105(l) Funds Facilities

IHS 105(l) Funds Can Be Used to Make Loan Payments on New/Expanded Healthcare Facility

- Principal & Interest Payments - *25 C.F.R. §. 900.70 (d)*

Pairing of 105(l) & Public/Commercial Financing Opportunities

- Allows for Construction & Acquisition of New Facilities
- Reduces or Eliminates Need for Tribal Contribution for Project



Power of Section 105(l) + Loans

Red Lake Band of Chippewa, Minnesota

Multiple Projects



Power of Section 105(l) + Loans
Yukon-Kuskokwim Health Corporation
\$165 Million Project

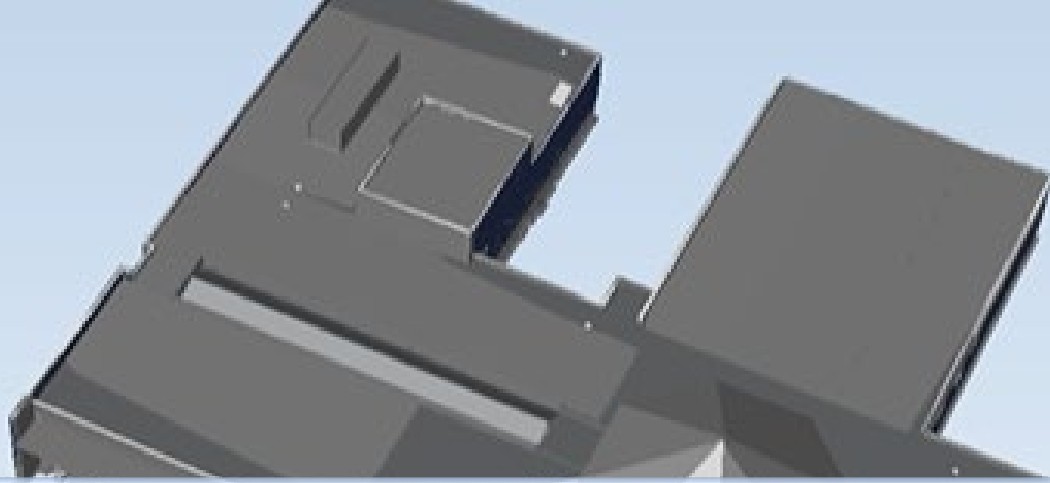


ONEIDA

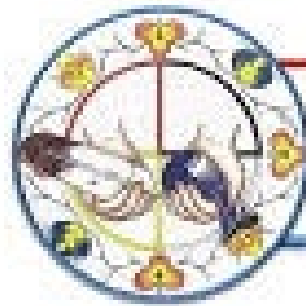
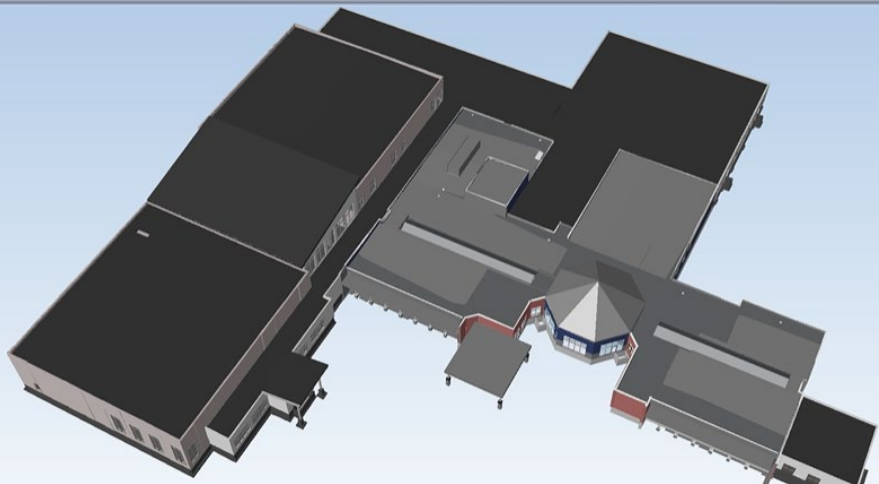
Power of Section 105(l) + Loans
Pit River – Tribal Health Clinic Expansion
\$8,415,000 Project



ONEIDA



Power of Section 105(l) + Loans
Bad River Health & Wellness Center
\$33 Million Project



BAD RIVER HEALTH
& WELLNESS CENTER



Power of Section 105(l) + Loans
Lac Courte Oreilles Health Center
\$42 Million Project



Project Impact

This Project Provides the Most Impact for the Largest Number of Oneida Nation Members with the Least Financial Impact on the Nation's Budget.

375,000 Patient Visits Per Year

Five Principles of Nation Building

Transformational Leadership

Strong Governing Systems

Cultural Relevancy

Strategic Outlook

Sovereignty

A good mind. A good heart. A strong fire.



Nation Building Themes

Use Relevant Data for Decision-Making

Integrate Oneida Values into our Governing Systems

Advance Community Engagement

Create Sustainable Community Economic Development

Strengthen Intergovernmental Strategies

A good mind. A good heart. A strong fire.



Approving the Project

Continued Evolution of Nation & Health Shared Legacies

Best Prepares Nation For the Future of Health

Empowers Employees and Patient for the Future

A good mind. A good heart. A strong fire.



Recommended Motion:

“Motion for Project #09-011 Oneida Comprehensive Health Division (OCHD) Integrated Campus to Move Forward to Implementation.”



Yawáko

Questions, Request for Information, Comments:

Oneida Comprehensive Health Division - Administration

ohc_admin@oneidanation.org

920.869.2711, ext. 0