

Oneida Comprehensive Health Division Project #09-011 OCHD Integrated Campus

June, 10th, 2024



ONEIDA



Introduction

Debra J. Danforth, RN, BSN

Division Director

920.869.2711, ext. 4807

ddanfort@oneidanation.org



ONEIDA



A good mind. A good heart. A strong fire.



Vision: A Progressive Sustainable Health System That Promotes Tsi?niyukwalihot^ (Our Ways)

Mission: We Provide the Highest Quality Care to Ensure Wellness for OUR Oneida Community

Values:

Responsive Leadership
Communication
Trust is the Foundation

Safety
Culturally Sensitive
Respect

Motion:

“Motion to Allow Oneida Comprehensive Health Division’s (OCHD) Non-Oneida Employees to Attend 6/10/24 General Tribal Council (GTC) Meeting Presentation for Department & Program Specific Questions.”

Current Projects

Pharmacy - Curbside Pick-Up Project

Optical – Second Pre-Test Room

Laboratory – Remodel

Dental – Scheduling Workflows

Current Projects

Health Board - Recommendation

Community Meetings & Feedback

Medical – Provider Recruitment / Space

Home Health Agency

Purpose of Integrated Campus

Meet Overall Health Needs of Community

Improve Patient Access to Care

Creating Culture of Empathy

Enhance Population Outcomes

Diversify Services Offered

A good mind. A good heart. A strong fire.



Purpose of Integrated Campus

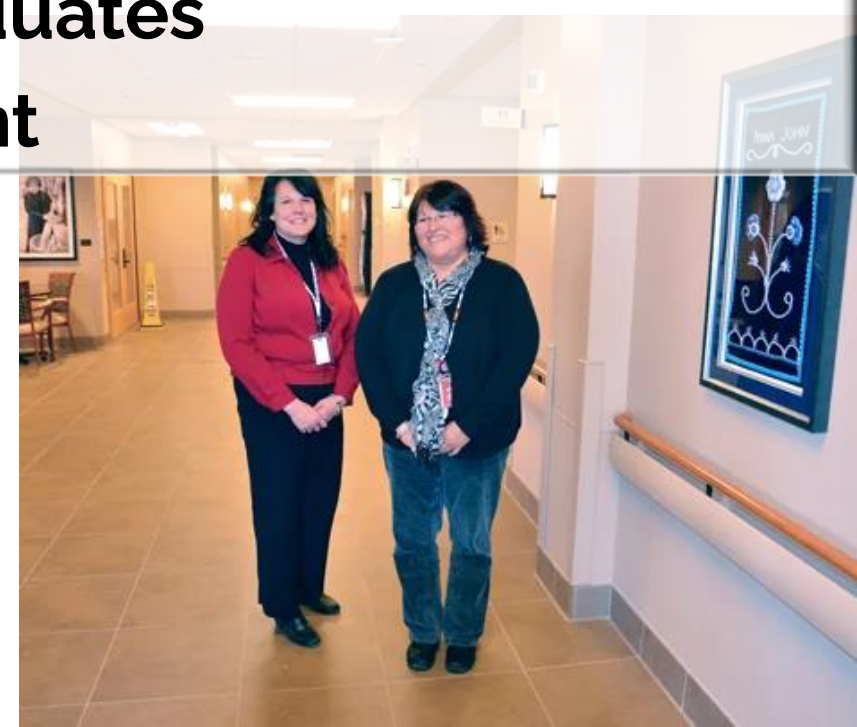
Unify Under One Campus Allows Health System to

- **Align Team and Resources**
- **Provide the Best Possible Care**
- **Best Experience for OUR Patients and Community**
- **Continued Provision of State-of-the-Art Care**



Take Full Advantage of Home-Grown Talent

- Higher Education Fund Graduates
- Employee Advancement





ONEIDA NATION
MUSEUM ARCHIVES



ONEIDA



ONEIDA



Director, Secretary, Four Community Health Reps, RN, LPN

A photograph of the Oneida Health Clinic building from 1978. The building is a long, single-story structure with a dark roof and light-colored walls. There are several windows and a central entrance. In the foreground, there is a paved parking lot with several cars parked, including a red pickup truck. The sky is blue with scattered white clouds. A semi-transparent purple banner is overlaid across the middle of the image, containing the text.

1978 Oneida Health Clinic 45 Employees



ONEIDA

An aerial photograph of a rural landscape, showing fields, roads, and some buildings. A semi-transparent purple rectangular overlay is positioned horizontally across the middle of the image, highlighting a specific area. The text '2000 Oneida Community Health Center Footprint' is written in white, bold, sans-serif font across this purple area.

2000 Oneida Community Health Center Footprint



ONEIDA



2002 Oneida Community Health Center Campus
180 Employees
175,000 Patient Visits Per Year



ONEIDA



2024 Oneida Community Health Center Campus
378 Employees
375,000 Patient Visits Per Year



ONEIDA

Project Description

Proposed Building Expansion:

- 148,500 square feet
- Includes 51,000 square feet Second Story “White Box” for Future Growth

Existing Facility

- 44,000 square feet interior renovations



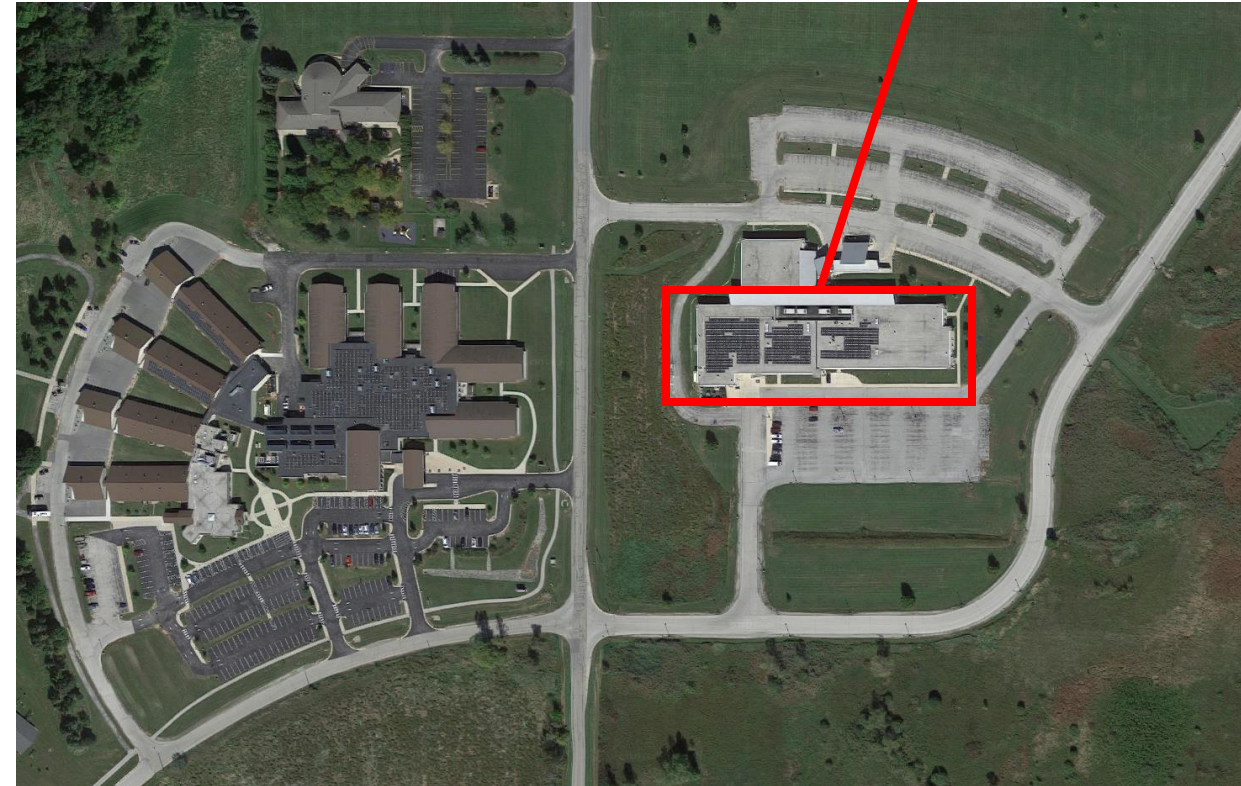
Existing OCHC Facility

Proposed Location

Current:

Oneida Community Health Center (OCHC) Campus

525 Airport Drive
Oneida, WI 54155



Existing OCHC Facility

A good mind. A good heart. A strong fire.



Highway 172

S. Overland Rd.

Minoka Hill Dr.

FUTURE
TRANSITIONAL RESIDENTIAL
DETOX TREATMENT FACILITY
22,000 SF

FACILITY
RESERVE
SPACE
PTO
3,000 SF
ADMIN
3,000 SF

MEDICAL CLINIC
10,000 SF

BEHAVIORAL
HEALTH
21,000 SF

PHARMACY
3,000 SF
LAB
3,700 SF
PUBLIC
TY
1,000 SF
PHYSICIAN
OFFICE
3,000 SF
PHARM
3,000 SF

SAFETY ROOM
6,000 SF

DENTAL
7,700 SF

CCRP
1,000 SF
CCRP
1,000 SF
PUBLIC
TY
1,000 SF

PHYSICAL
THERAPY
6,000 SF
XRD
3,000 SF
MEDICATION
COUNSELING
1,000 SF

OPTICAL
6,000 SF

COMMUNITY
HEALTH
6,700 SF

PHYSICIAN
OFFICE
3,000 SF
EMPLOYEE
HEALTH
3,000 SF
HEALTH
PRO
1,000 SF



Existing OCHC Facility



What is a 'White Box'?

**A Space Reserved for
Future Growth That is
Tailored to Patient Needs**



ONEIDA

IHS Compacts/Funding Agreements

Tribal Nations Assume Full Funding and Control Over Programs, Services, Functions, and Activities (PSFA)

Why Is This Impactful?

“Traditional Healing”

“Complementary and Alternative Medicine Services”



Economic Sustainability

Plan for Zero Dollar Tribal Contribution

Use Funds Allocated Exclusively for Health Care

IHS Funding Produces the Greatest Nation Flexibility

Maintains Funds for GTC Mandated Expenses

A good mind. A good heart. A strong fire.



Social Sustainability

Needs: Current vs Future

- The Needs are Now!

Community Health & Well-Being

- Oneida Nation Membership

Meet Growth Trajectory & Projections

Environmental Sustainability

Renewable Energies – Solar Projects

Lean/Green Construction

Energy Efficient

Utilize Existing Structure

Nation's Ability to Repurpose Existing Buildings/Space

A good mind. A good heart. A strong fire.



Funding

**Goal: Zero Dollars of Tribal
Contribution to Project**

Funding Plan

Secure a Loan

IHS 105(L) Annual Funding to Make Loan Payments

Section 105(L) Funds + Loans

Combination of 105(L) Funds + Loans Used For:

- **New Healthcare Facility**
- **Expanded Healthcare Facility**

Potentially Eliminate/Substantially Reduce

- **Need For Project Tribal Contribution**

What Are 105(L) Leases?

105(L) Not a Traditional Lease:

- Facility Cost Share Agreement
- IHS & Tribal Nation to Reimburse Facility Costs

Costs Reimbursed: Facility (or Part Of) Used

- Carry Out Programs, Services, Functions, or Activities (PSFAs)

What Are 105(L) Leases?

Program Statutory Requirement Under Federal Law

- Indian Self Determination and Education Assistance Act (ISDEAA)

Nation Entitled to 105(L)

- IHS Compact & Funding Agreement under ISDEAA

Nation Receives 105(L) Annually In IHS Lease Agreements

How 105(L) Funds Facility?

IHS 105(L) Funding Healthcare Facility Expenses

- Principal Payments
- Interest Payments

Pairing of 105(L) & Public/Commercial Financing Opportunities

- Allows for Construction & Acquisition of New Facilities
- Does Not Substantially Encumber Tribal Funds



Power of Section 105(L) + Loans

Red Lake Band of Chippewa, Minnesota

Multiple Projects





Power of Section 105(L) + Loans
Yukon-Kuskokwim Health Corporation
\$165 Million Project

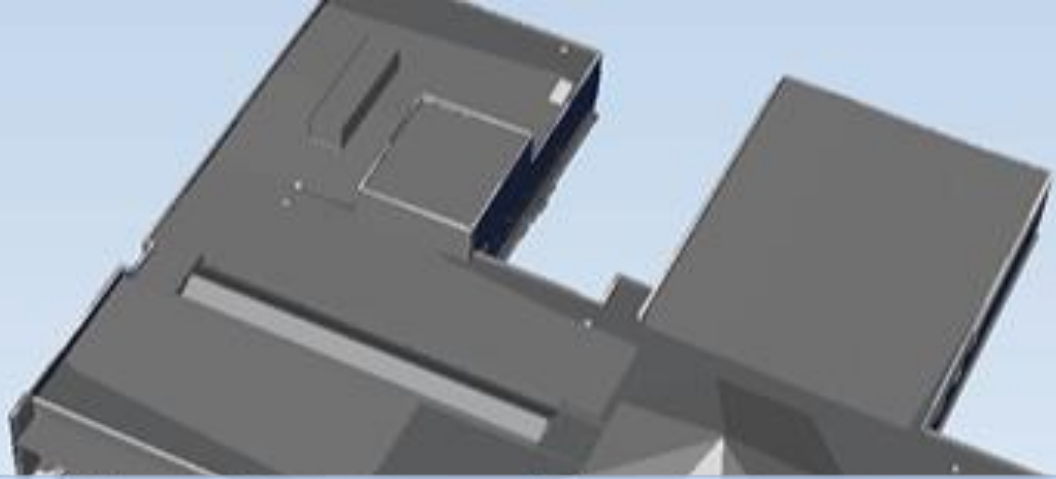


ONEIDA

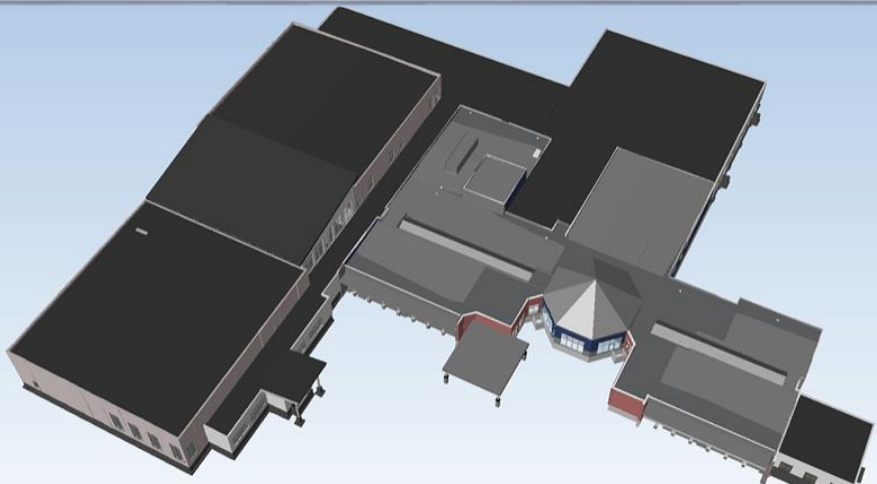
Power of Section 105(L) + Loans
Pit River – Tribal Health Clinic Expansion
\$8,415,000 Project



ONEIDA



Power of Section 105(L) + Loans
Bad River Health & Wellness Center
\$33,000,000 Project



BAD RIVER HEALTH
& WELLNESS CENTER



Power of Section 105(L) + Loans
Lac Courte Oreilles Health Center
\$42,000,000 Project



Project Impact

This Project Provides the Most Impact for the Largest Number of Oneida Nation Members with the Least Financial Impact on the Nation's Budget.

375,000 Patient Visits Per Year

A good mind. A good heart. A strong fire.



Five Principles of Nation Building

Transformational Leadership

Strong Governing Systems

Cultural Relevancy

Strategic Outlook

Sovereignty

A good mind. A good heart. A strong fire.



Nation Building Themes

Use Relevant Data for Decision-Making

Integrate Oneida Values into our Governing Systems

Advance Community Engagement

Create Sustainable Community Economic Development

Strengthen Intergovernmental Strategies

A good mind. A good heart. A strong fire.



Approving the Project

Continued Evolution of Nation & Health Shared Legacies

Best Prepares Nation For the Future of Health

Empowers Employees and Patient for the Future

A good mind. A good heart. A strong fire.



Recommended Motion:

“Motion for Project #09-011 Oneida Comprehensive Health Division (OCHD) Integrated Campus to Move Forward to Implementation.”



Yaw^ko

Questions, Request for Information, Comments:

Oneida Comprehensive Health Division - Administration

ohc_admin@oneidanation.org

920.869.2711, ext. 0