

## **CIP# 21-105 - Orchard Buildings**

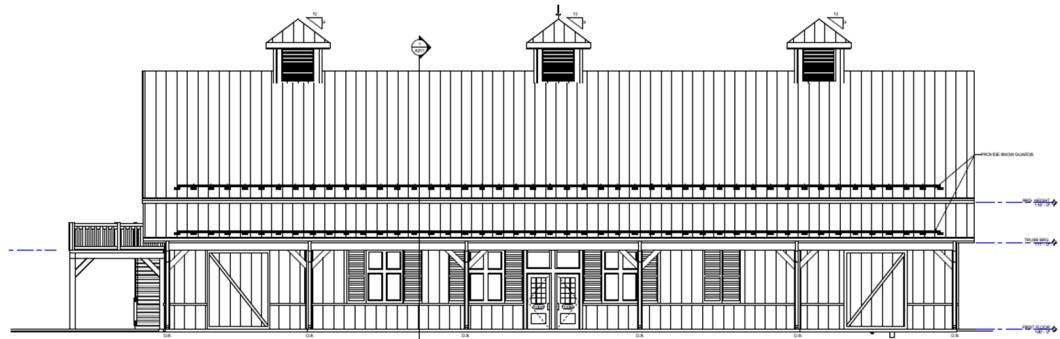
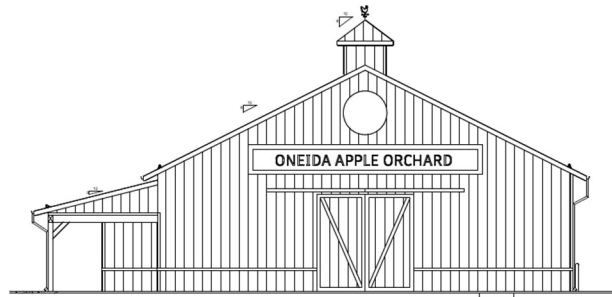
### **Project Description:**

The purpose of this project is to construct an updated, new retail store for the Orchard Enterprise that can adequately house the various produce and retail operations for the community. The Retail facility is proposed to be developed on a new property, adjacent to the south-eastern side of the Orchard. In addition, this project will look to replace existing storage buildings with an updated machine warehouse and office space to house the facility equipment. The storage building will be constructed on the current site.

Per OBC Resolution #04-08-20-K, the Engineering Department will be contracting with Mission Support Services, LLC for Design-Build services.

### **Current Status:**

Continuing with Schematic Design phase for both the Retail and Storage building. Awaiting feedback from WisDOT regarding easement location along STH-54 and we are awaiting the Wetland Delineation report to review any impacts to site design.



### **Schedule:**

Approvals - Complete  
Bidding- Complete  
Design - In Progress  
Construction - TBD

### **Project Partners:**

Engineering, Orchard, Land, Comprehensive Housing, Purchasing, Legal Office.



Oneida Engineering  
Department

*DEVELOPING A COMMUNITY OF WELL-BEING THAT IS UNIQUELY ONEIDA*

**Date: 4/30/24**