

Oneida Environmental, Health, Safety, Land & Agriculture Division Quarterly Report FY21 3rd Quarter



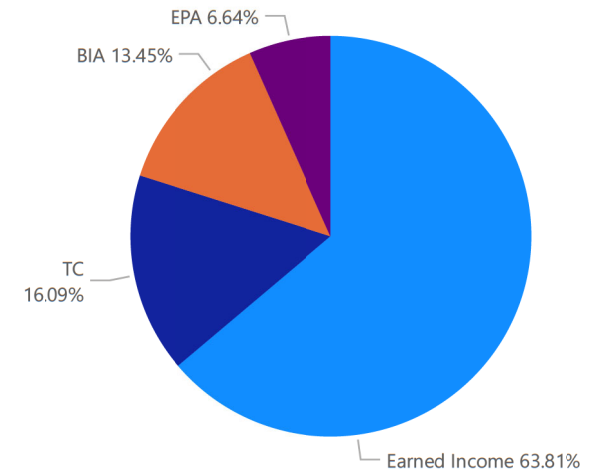
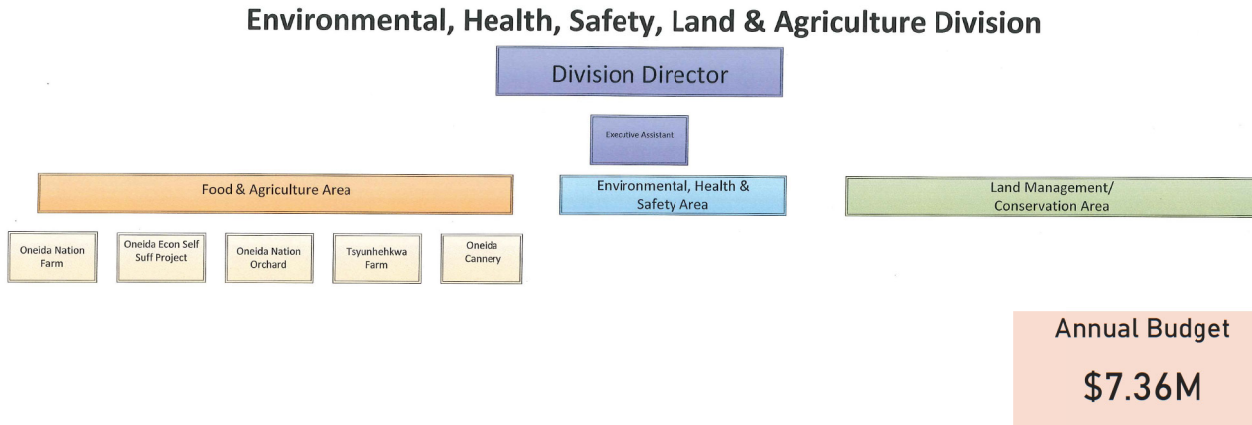
Environmental, Health, Safety, Land and Agriculture Vision Statement (Desired future position)

By fulfilling our fiduciary responsibilities we manage, restore, reclaim and enhance the resources and assets of the Oneida Nation that protect human health and wellness, and the natural and built environment.

Environmental, Health, Safety, Land and Agriculture Mission Statement (Defines what we do)

We provide high quality services that protect and improve the health of the human and natural environment, consistent with Oneida's culture and vision.

Amount by EHSLA Division Funding



Report Prepared By: Victoria Flowers, Environmental Compliance Coordinator

Report Submitted By: Nicole Rommel, EHSLA Division Director

Oneida Environmental, Health, Safety, Land & Agriculture Division Quarterly Report FY21 3rd Quarter



Rainbow Trout Release



Silver Eagle Award given by USFWS for outstanding work in conservation



Medicine Boxes



Egg Donation to Pantry



Seed and Plant Distribution



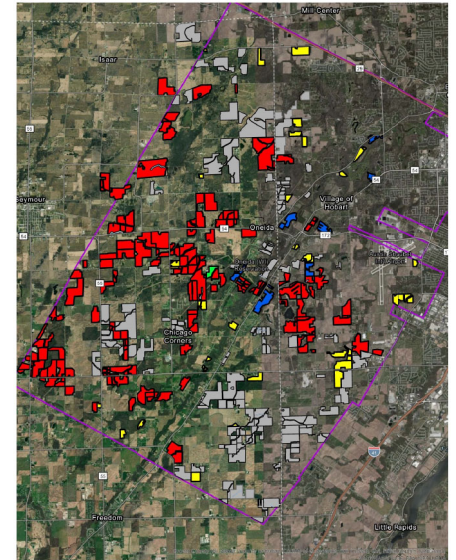
Property Corner Marking



Onsuhsa Lake



Oneida Agricultural Leases



EHS Area Goal Statement

We provide high quality services that protect and improve the health of the human and natural environment, consistent with Oneida's culture and vision.



EHS Activities Supporting OBC Priorities

EHS Activities

2,081.75

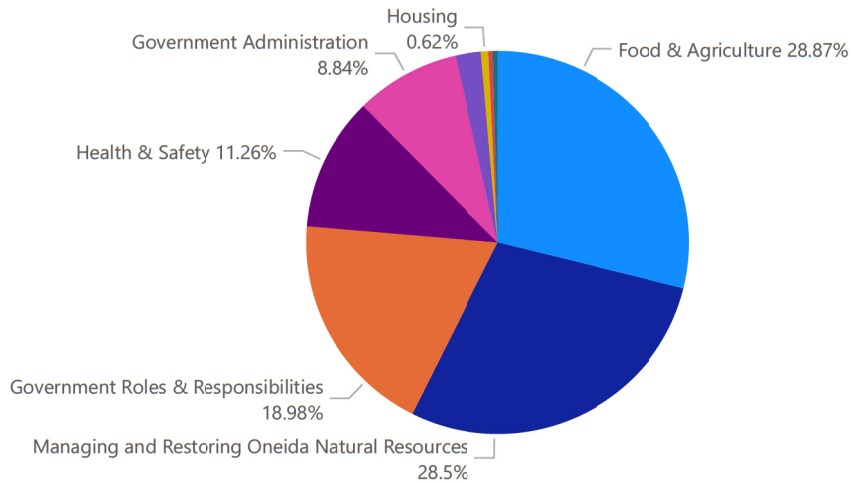
Acres Impacted

EHS Total Activities

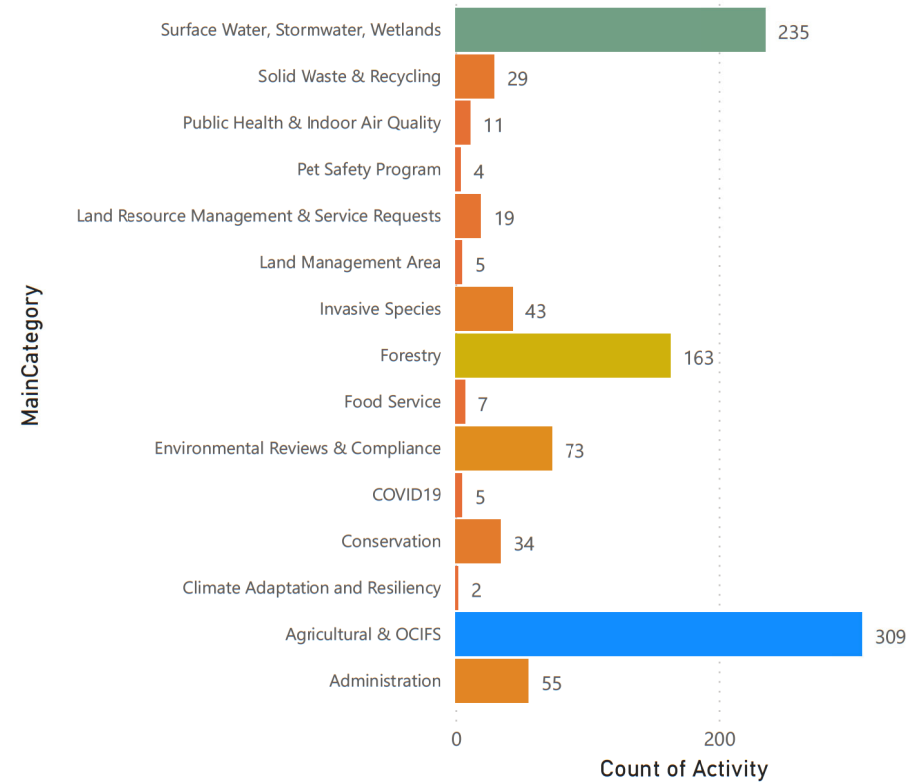
1724

Count of Activities

Activities By Priority



Count of Activities By Program Area



EHS Area Mission Statement

We provide high quality services that protect and improve the health of the human and natural environment, consistent with Oneida's culture and vision.



EHS Area Highlights

Agriculture Technical Assistance Acres Impacted

1,926.80

Acres Impacted

1, 015 Rainbow Trout, provided by UFWFS were released into Osnuhsa Lake

EHS Resource Protection Highlights

Project Name
2021 ASTSWMO Mid-Year Meeting - Tanks
Audubon project
Bulky Item Event
Dexter Prairie Rx Burn
Division received Champions of Conservation Award
Drone demo for DNR, USFWS, NRCS
Energy and Emergency Fuel Planning
Hazardous and Electronic Waste Program
Milkweed and monarch caterpillar rescue coordination
MOU Discussion with Brown County
Pearl Street Quarry operations and planning
Pest Surveys
1,015 Rainbow Trout Stocked in Osnuhsa Lake with USFWS

Hazard Tree Assessment & Removal

Hazard Tree Assessment	46
Hazard Tree Removal	3

EHS Food & Agriculture Highlights

Project Name
2021 Spring Planting Plan
Ag land highest and best use meeting
Grazing Consulting
Indigenous Woodland Agriculture Learning Center coordination (IWALC)
NEW Water Projects Meeting
ONF Grazing Project
White corn collaboration

Invasive Species Management Highlights

Project Name	Comments	Acres Impacted
Curly Leaf Pondweed Lake Treatment	Documented and assisted with Lake treatment	5.00
Dug up 25 Purple Loosestrife plants for beetles	Collected plants at the Oneida Apple Orchard	1.00
Seal outlet at Osnuhsa Lake	Documented AIS treatment at Osnuhsa Lake.	5.00
Total		11.00

Hazardous Waste Voucher Program

168

Waste Vouchers Issued

Hazardous Waste Voucher Program

67

Waste Vouchers Redeemed

Hazardous Waste Voucher Program

899

Pounds Haz. Waste Disposed

Bulky Item Pick-up Event

32.56

Tons of Bulky Items Disposed

Land Area Mission Statement

Land Management is committed to building a responsible nation to enhance and strengthen the Oneida Nation's sovereignty by reacquiring land, expanding trust lands and distributing for community use.



A good mind. A good heart. A strong fire.

Land Management Activities

Activity	Count	Acres Impacted
Title Search Trust Land	4	
Residential Lease Trust Land	3	18.65
Residential Lease Fee Land	4	7.75
Records Management	4	20.00
Property Maintenance Fee Land	1	0.40
Probate	39	
Other Agreements	57	525.00
Locate Property Boundaries Trust Land	4	73.20
Locate Property Boundaries Fee Land	3	60.82
Land Use Agreement	2	
Land Commission	17	459.70
Land Acquisition HIP	2	4.55
Land Acquisition Commercial	3	5.93
Land Acquisition Agricultural	3	559.85
Interdepartmental Agreements	15	128.14
Information Management	87	611.74
Individual Trust Land - Sale of Trust Land	1	0.92
Fee to Trust	1	2.71
Encroachments Trust Land	2	66.50
Encroachments Fee Land	2	37.01
Customer Service	37	18.04
Commercial Lease Trust Land	29	347.83
Commercial Lease Fee Land	40	781.64
Agricultural Lease Trust Land	5	203.76
Agricultural Lease Fee Land	8	675.53
Total	373	4,609.66

Land Management Area

Probate Cases Worked On

39

Count of Activity

Food & Agriculture

1,439.14

Acres Impacted

Revenue Generation

1,135.40

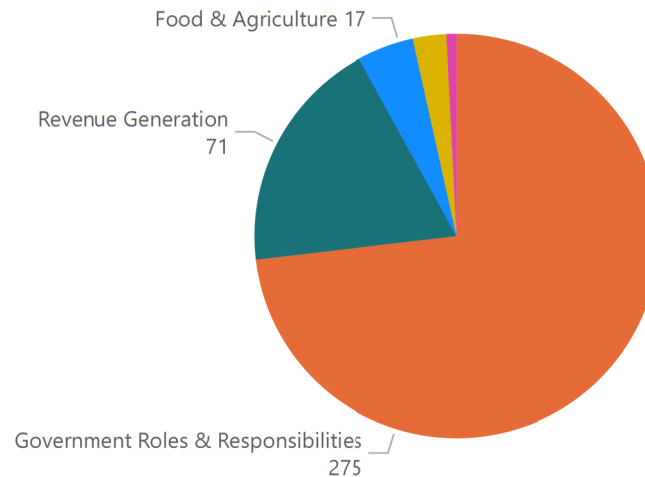
Acres Impacted

Housing

30.19

Acres Impacted

Activities Supporting OBC Priorities



Land Area Mission Statement

Land Management is committed to building a responsible nation to enhance and strengthen the Oneida Nation's sovereignty by reacquiring land, expanding trust lands and distributing for community use.



Land Management Activities

4 Land Use Licenses (NY forest inventory, Riverdale forest inventory, Outagamie County Conservation watershed, Pow-wow)
2 Easements to BIA (Green Valley for WPS)
3 Probate Hearings held
1 Service Line Agreement (WPS at Site 1)

Completed 9 title reports received 3 requests for additional title reports not yet completed Completed approximately 100+ file room requests that includes committing to onbase and physical filing of stacked up requests

Met with BIA for conference call to update fee to trust application status and sending requests to Law office for review and following up.

Check trail cams daily and work with OPD and Conservation to correct any problems areas.

Food & Agriculture Activities

Area formally organized on June 16, 2021

Land & Agriculture
Activities

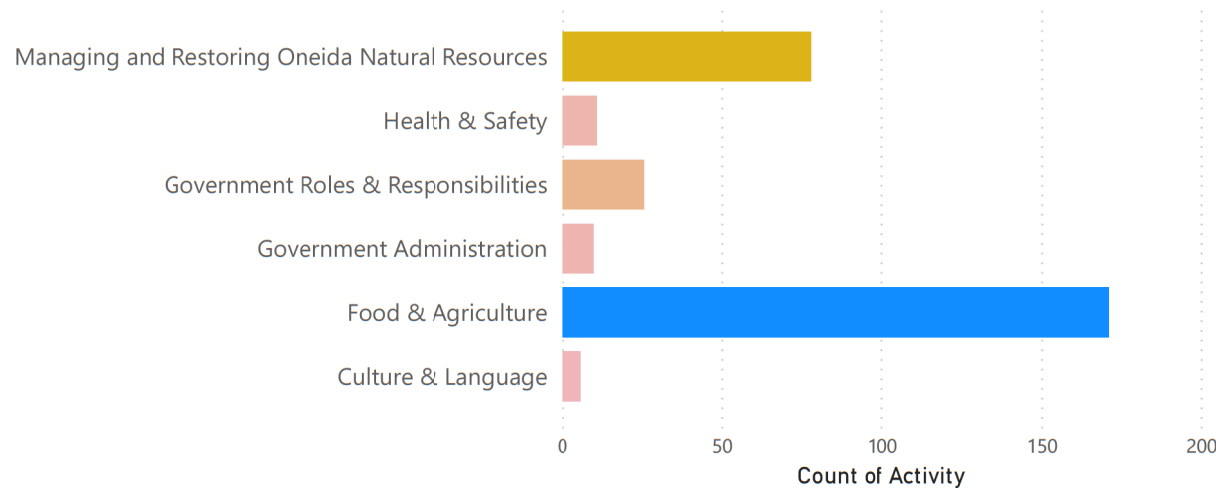
302

Count of Activities

**\$25,000 grant for an Oneida Nation
meat processing plant feasibility study**

Activities By Priority

OBC Priorities Supported



Activities Supporting Food & Agriculture

Activity	Count of Activity
Agricultural equipment, repair and maintenance	1
Agricultural Outreach and Education	17
Agricultural Product Order	7
Agriculture Technical Assistance	17
Ceremonial Firewood Delivery	6
Customer Service - Conservation	3
External Agricultural Collaborations	25
Federal Regulatory	1
Food Handler Certification	2
Food Service Inspection	1
Food Service License	1
Food Sovereignty and Security Projects	21
Oneida Farmers Market	25
Picking & Harvest	1
Technical or Professional Workgroup	7
Wild Animal Control Complaint	1
Work Order Request Completion	22
Youth Agricultural Workshops	7
Total	165

Outreach & Education Activities

Project Name	Comments
Farmaid video coordination	
Indigenous Woodland Agriculture Learning Center coordination (IWALC)	
Intertribal Agriculture Council coordination	
Assisted Tsyunhehkwa with youth	Assisted at Tsyunhehkwa screening white corn and monitoring the 50 high school kids that the Oneida school brought over to help.
Assisted Tsyunhehkwa with youth workers	Assisted at Tsyunhehkwa screening white corn and monitoring the 50 high school kids that the Oneida school brought over to help.
Composting workshop pre and post test	Created a 20-question composting test, and answer key for the Composting Workshop participants.
OCIFS letter of support	Created an OCIFS letter to be sent to the OBC on behalf of the OCIFS members thanking Jeff Scofield for his commitment to Oneida.
Created a OFM vendor folder in Ourlook	Created an Outlook folder for the vendors at the Oneida Farmers Market and inputted the emails of 80 vendors to better communicate with them.
Community Composting Workshop	Facilitated the Community Composting workshop at Tsyunhehkwa where we had 15 community members attend.
Presentation on OFM for Land Commission meeting	Gathered information regarding how the Oneida Farmers Market is set up and the policies in place to present at the May 24 Land Commission Meeting.
Youth Forage Summit request	Had an extensive phone conversation with Shelby Crum from the Youth Forage Summit re: OCIFS project and having a Member present.
Experiential Learning Meeting	Met with Pat Pelky regarding the 3-year Work Plan and updated Charter for the Woodland Indigenous Ag Learning Center.
Composting Workshop prep	Picked up a compost tumbler at Home Depot and took to Tsyunhehkwa where the demonstrations will be happening.
OCIFS Ed articles in Kali	Pulled up the Kalihwisaks articles schedule and assigned the OCIFS areas articles to the months that would best coincide to what events are happening.
Composting workshop info packets	Put together 20 informational folders with a quiz and handouts for the community composting workshop on Saturday, June 19.
Wrote 2 OCIFS Members articles	Researched and began writing draft articles to be submitted to the Kalihwisaks for the Oneida Nation School and Food Distribution Program.
Handouts for Community Composting workshop	Watched a 55 minute You Tube video on the Bokashi Fermenting Bin and from the notes, made a 2-page informational hand out for the Community Composting workshop.

Food & Agriculture Area Mission Statement



Food & Agriculture Activities

Oneida Nation Farm - Meat

Head of cattle slaughtered	Total weight of cattle slaughtered (lbs)	Revenue From beef sales
33	27,654	\$34,676

Head of buffalo slaughtered	Total weight of buffalo slaughtered (lbs)	Revenue from buffalo sales
4	1,701	\$697

Pounds of beef sold at B&B Market	Pounds of buffalo sold at B&B Market	Revenue from sales at B&B Market
2,359.07	687.46	\$20,309

Pounds of beef sold to Anna John Nursing Home	Revenue from beef sold to Anna John Nursing Home
1,447	\$1,085

ONF Black Angus Calves Born
53 heifer calves, 43 bull calves

Bulk Beef Orders
42

Bulk Buffalo Orders
1

Enrolled members served
15

Oneida Nation Farm - Crops

Bushels of Dry Grain Corn sold	Corn Gross Revenue
25,783.90	\$169,185.08

Acres of Field Hay Sold	Tons of Field Hay Sold	Revenue from Hay
352.70	564.15	\$78,981

Oneida Nation Farm is one of the largest NE WI Beef, Buffalo and cash crop farms. Many Oneida Nation member are not aware of this nor aware of the B&B Market.

Food & Agriculture Activities

Tsyunehkwa Accomplishments

Tsyunehkwa Highlights

6 - grass fed and finished beef animals processed and donated to the emergency pantry.

\$25,000 grant for an Oneida Nation meat processing plant feasibility study

150 families participated in annual seeds & plants distribution

1800 pounds of white corn to the Cannery for processing

326 dozen eggs donated to the emergency food pantry

Cannery Accomplishments

Cannery Highlights

Berry mush bowls provided for the Oneida Nation School system culture days.

Conducted research and development with cold press juice pulp to grind into powder after freeze drying-looking at the possibility of powder drinks, energy filled powders, and vitamin capsules while reducing waste.

Corn mush kits and strawberry drink for Oneida Nation Foster Care Program and Oneida Family services drive through events.

Donated tea bundle with #6, mint, camomile, dehydrated violet flowers, dehydrated blueberries and strawberries and medicine kits of tobacco, sweet grass and white sage to support the Language Immersion program.

Medicine box of sweet grass, tobacco, and sage at the front entrance of the Oneida Community Health Center.

Partnered with Oneida Community producers and growers to host indigenous diet and wellness challenges.