

Oneida Environmental, Health, Safety, Land & Agriculture Division Quarterly Report FY21 4th Quarter

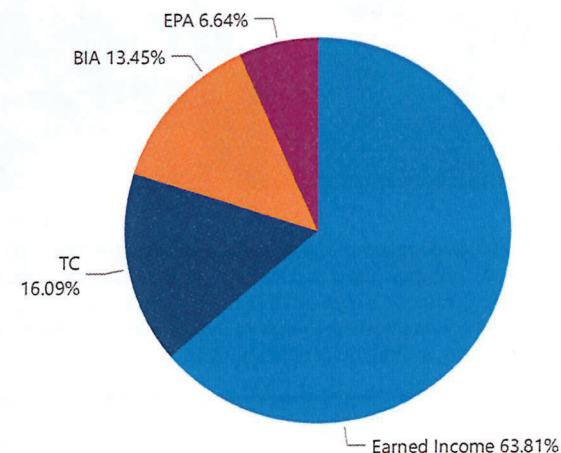
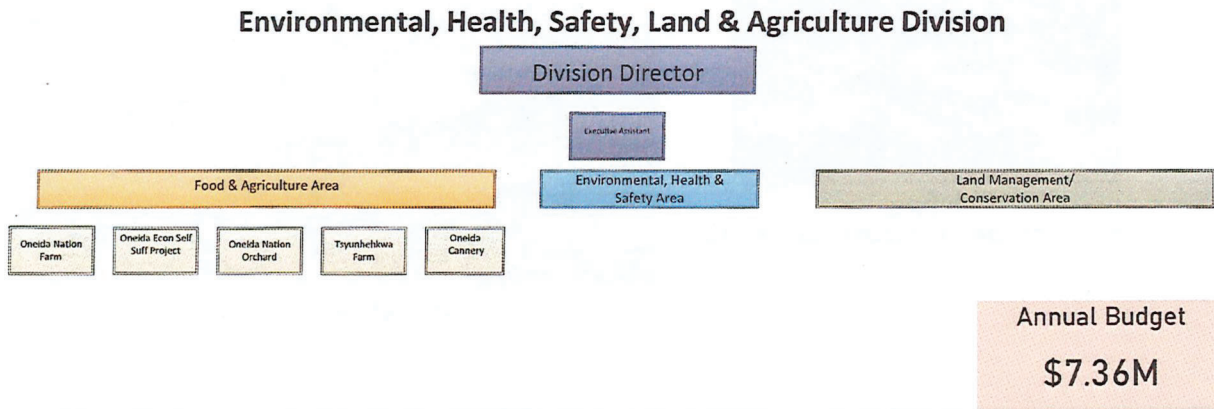
Environmental, Health, Safety, Land and Agriculture Vision Statement (Desired future position)

By fulfilling our fiduciary responsibilities we manage, restore, reclaim and enhance the resources and assets of the Oneida Nation that protect human health and wellness, and the natural and built environment.

Environmental, Health, Safety, Land and Agriculture Mission Statement (Defines what we do)

We provide high quality services that protect and improve the health of the human and natural environment, consistent with Oneida's culture and vision.

Amount by EHSLA Division Funding



Report Prepared By: Victoria Flowers, Environmental Compliance Coordinator

Report Submitted By: Nicole Rommel, EHSLA Division Director

Oneida Environmental, Health, Safety, Land & Agriculture Division Quarterly Report FY21 4th Quarter



Oneida Lake Fish Camp



Tire Waterer for Oneida Nation Pasture



Oneida Nation Orchard Community Apple Picking



Great day working with our Oneida High School Students teaching them how to make homemade applesauce and fruit leather! They were able to see the entire process from Orchard as they harvested early this week and then to production with creating a few different products from one type of 🍏



Oneida Cemetery



EHS Area Goal Statement

We provide high quality services that protect and improve the health of the human and natural environment, consistent with Oneida's culture and vision.



EHS Activities Supporting OBC Priorities

EHS Activities

2,633.36

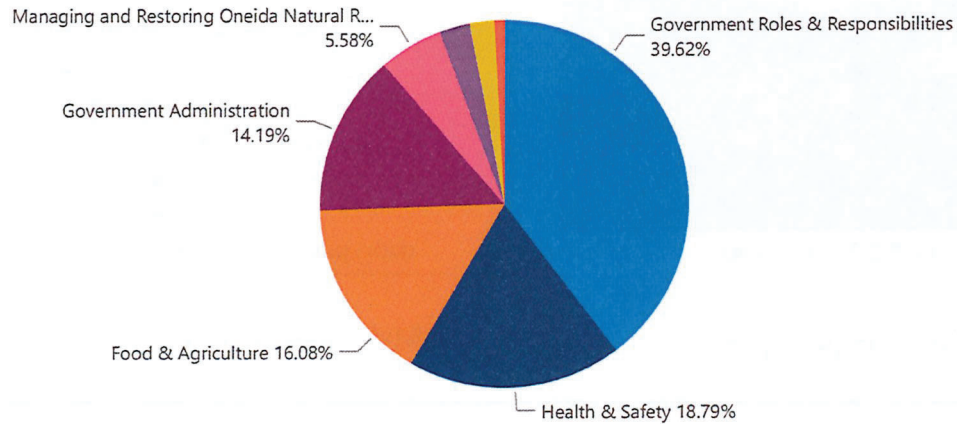
Acres Impacted

EHS Total Activities

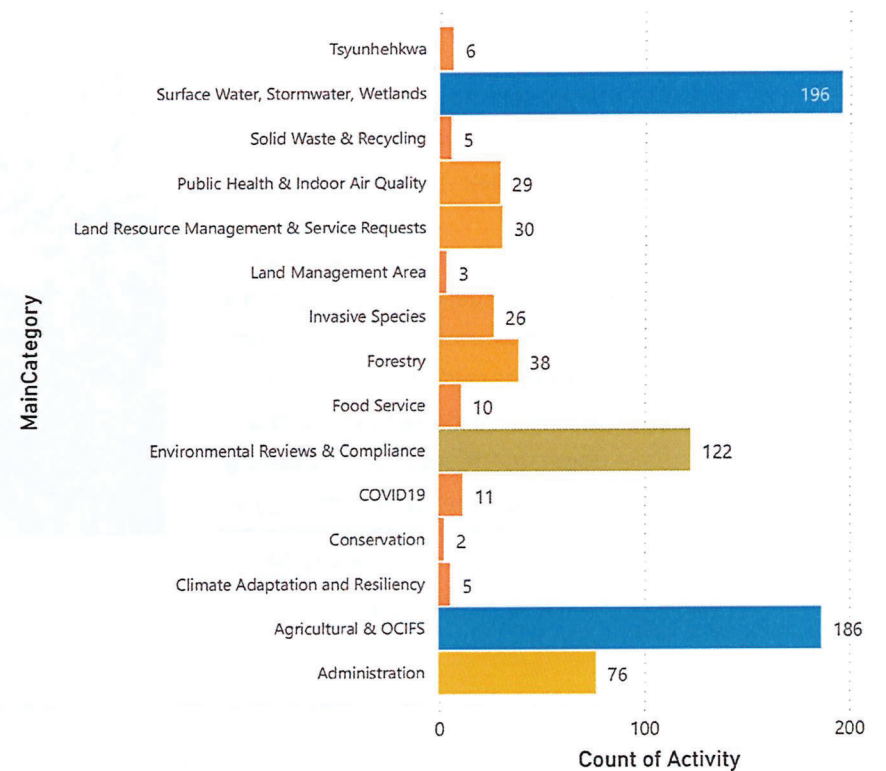
1508

Count of Activities

Activities By Priority



Count of Activities By Program Area



EHS Area Mission Statement

We provide high quality services that protect and improve the health of the human and natural environment, consistent with Oneida's culture and vision.



EHS Area Highlights

EHS Food & Agriculture Highlights

Project Name

Brook trout stocking, photo and video processing and dist.
Cover Crop Podcast
Grassworks Picnic and Pasture Walk
Grazing Consulting
Stocking of walleye from St. Croix
Walleye delivery from Menominee

Agriculture Technical Assistance Acres Impacted

1,519.98

Acres Impacted

Hazard Tree Assessment & Removal

31

Hazardous & E-Waste

139

Vouchers Issued

Oneida Lake Kayak Launch



EHS Resource Protection Highlights

Project Name

ACOE Public Assistance program coordination
Audubon volunteer appreciation event coordination
Discussion of Ranaovel Dairy with EPA (Ben Atkinson)
Haskell University presentation on habitat restoration
Jordan Wetland determination
Kayak launch installation at Oneida Lake
Meeting with NEW Water on Outagamie Co. Drainage Board
Met with WI DATCP Reps
National Audubon interview
Natural Resource Foundation and Lawrence University tour
Phragmites Treatment State Farm Wetland)

Hazardous and E-Waste Vouchers

Pounds of Hazardous Waste	Pounds of Non-Hazardous	Refrigerant Devices-Small	Microwaves	Lead Batteries	Brown County Charge
1,995	10,106	15	10	2	\$3,308.80

Land Area Mission Statement

Land Management is committed to building a responsible nation to enhance and strengthen the Oneida Nation's sovereignty by reacquiring land, expanding trust lands and distributing for community use.



A good mind. A good heart. A strong fire.

Land & Conservation Activities Supporting BC Priorities

Activities Supporting Culture

10

Ceremonial Firewood Deliveries

Probate Cases Worked On

24

Count of Activity

Food & Agriculture

1,732.77

Acres Impacted

Revenue Generation

680.60

Acres Impacted

Housing

152.23

Acres Impacted

Oneida Sacred Burial Grounds Assistance

36

Activities Supporting Food & Agriculture

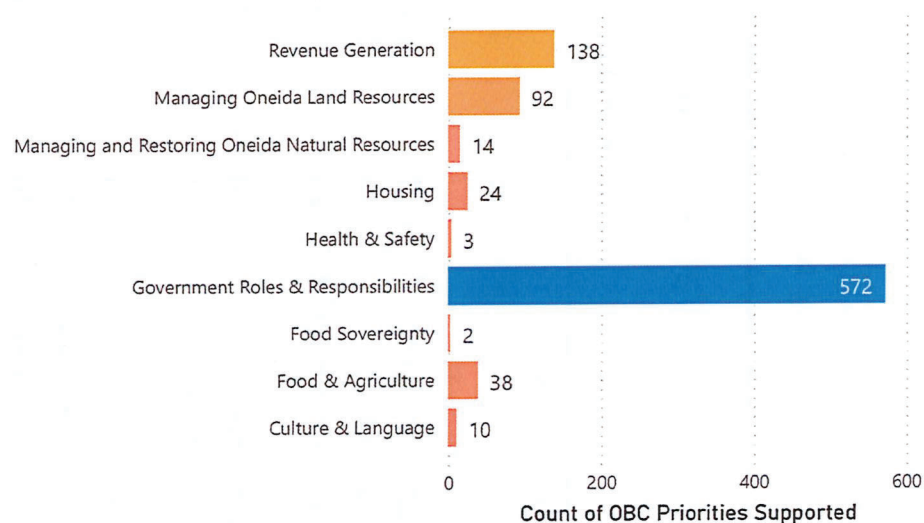
Activity	Count	Acres Impacted
Agricultural Lease Fee Land	27	1,415.61
Agricultural Lease Trust Land	6	312.66
Land Acquisition Agricultural	5	4.50
Picking & Harvest	1	
Tsyunhehkwa Program Administration, Development and Evaluation	1	
Total	40	1,732.77

Revenue Generation

Activity	Count	Acres Impacted
Commercial Lease Fee Land	61	162.20
Commercial Lease Trust Land	34	493.71
Harvest License and Permit Sales and Issuance	23	
Land Acquisition Commercial	9	22.69
Land Use Agreement	9	
Land Use Permit Trust Land	2	2.00
Total	138	680.60

Activities Supporting OBC Priorities

OBC Priorities Supported



Land Area Mission Statement

Land Management is committed to building a responsible nation to enhance and strengthen the Oneida Nation's sovereignty by reacquiring land, expanding trust lands and distributing for community use.

Land & Conservation Activities Supporting BC Priorities

Activity	Count	Acres Impacted
Consultation or Coordination	2	0.92
Customer Service	60	239.15
Customer Service - Conservation	7	
Divisional Administrative Support	20	286.93
Document Recording - Other	14	8.95
Document Recording Assignment of Lease	23	16.23
Document Recording Lease	14	89.91
Document Recording Lease Modification	1	13.00
Document Recording Mortgage	23	15.06
Document Recording Satisfaction	14	7.08
Easement Agreements Trust Land	10	24.63
Encroachments Fee Land	7	24.43
Encroachments Trust Land	1	22.44
Harvest Registration	3	
Individual Trust Land - Gift Conveyance	8	2.64
Individual Trust Land - Sale of Trust Land	4	1.50
Individual Trust Land - Technical Assistance	6	
Information Management	96	127.04
Interdepartmental Agreements	10	146.40
Interdepartmental Collaboration	2	
Land Commission	23	25.45
Land Use Agreement	1	
OPD Request Trust	1	
Other Agreements	35	17,648.60
Pet Licenses Issued	1	
Service Agreement County	7	
Service Agreement Municipality	2	
Title Search Fee Land	4	35.44
Title Search Trust Land	22	38.96
Total	421	18,774.76

Housing		
Activity	Count	Acres Impacted
Demolition Fee Land	12	129.03
Land Acquisition HIP	5	
Reporting	3	8.00
Residential Lease Fee Land	2	6.61
Residential Lease Trust Land	2	8.59
Total	24	152.23

Food & Agriculture Area Mission Statement

Create a sustainable, self-sufficient food system as a comprehensive approach to enhancing our community's health and wellness.



A good mind. A good heart. A strong fire.

Food & Agriculture Activities Support BC Priorities

Area formally organized on June 16, 2021

Activities Supporting Food & Agriculture

Activity	Count of Activity
Agricultural equipment, repair and maintenance	1
Agricultural Outreach and Education	8
Agricultural Product Order	3
Agriculture Technical Assistance	2
Beef Production & Sales	1
Beef Sales & Donations	1
Buffalo Sales or Donations	1
Composting Workshop	4
Divisional Budget and Finance	1
Egg Sales or Donations	3
External Agricultural Collaborations	18
Food Sovereignty and Security Projects	13
Grant Administration	9
Hemp Technical Assistance	1
Information Management	14
Interdepartmental Collaboration	1
Medicine Gardens	2
Oneida Farmers Market	40
Orchard Distribution and Sales	2
Picking & Harvest	2
Records Management	3
Reporting	7
Seed or Plant Distribution Sales or Donations	1
Staff Meetings	15
Technical or Professional Workgroup	1
Training or Webinar	16
Tsyunehkwa Community Outreach	1
White Corn Activities	1
Workforce Management	7
Youth Agricultural Workshops	7
Total	186

Activities Supporting Food & Agriculture

158

Activities

Activities Supporting Government Roles & Responsibilities

22

Activities

Activities Supporting Human Health & Environment

11

Activities

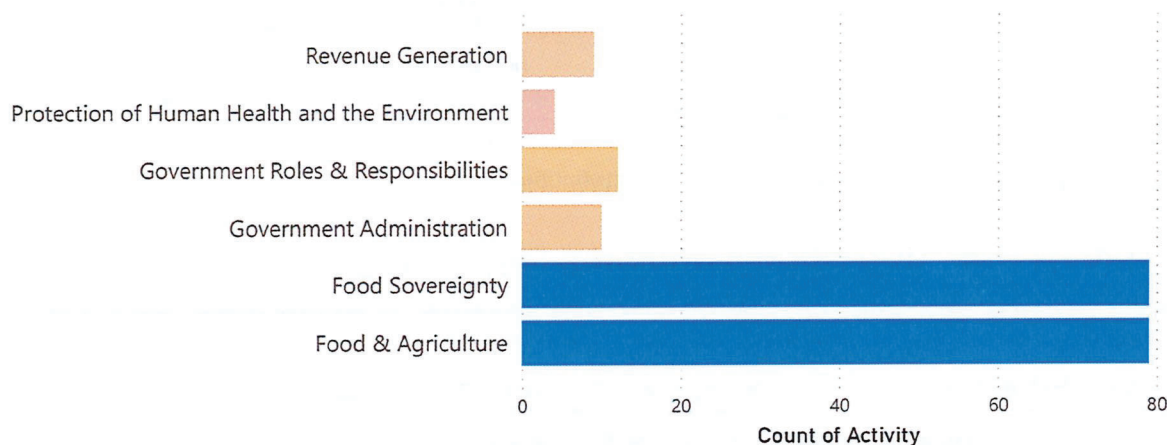
Outreach, Education & External Collaboration

26

Activities

Activities By Priority

OBC Priorities Supported



Food & Agriculture Area Mission Statement

Create a sustainable, self-sufficient food system as a comprehensive approach to enhancing our community's health and wellness.



OBC Priorities Revenue Generation and Health & Safety Highlights

Highlights Supporting Revenue Generation and Health & Safety

Project Name	Comments
Beef Total into Elder Food Boxes	2709 pounds \$13,509.00
Buffalo total into elder Food Boxes	2,744 pounds \$20,550.00
Community compost workshop	Facilitated the Community Composting workshop at Tsyunhehkwa where we had 15 community members attend.
Compost information for workshop	Scanned in the 62 page 'Master Composter' Home Study Course and sent it to the 15 community members in the compost workshop.
Compost workshop material virtually	Completed putting together the information for the Community Composting Workshops and put it on the webpage for participants to access virtually.
Egg Sales to Radisson	112 Dozen Eggs sold to Radisson
Eggs Donated to Pantry	134 dozen eggs donated
Elder Boox Boxes	300 Dozen eggs into Elder Food Boxes
Prepared for composting workshop	Put together informational folders to be used at the September 18 composting workshop and gathered gift backs and items for the last workshop.
Waupun Correctional and Oneida products	Spoke with Chaplin Mitch Freeman from Waupun Correctional facility re: the facility ordering Oneida food products. Called Sarah White and connected her with the Chaplin.

Food & Agriculture Area Mission Statement

Create a sustainable, self-sufficient food system as a comprehensive approach to enhancing our community's health and wellness.



OBC Priorities Food & Agriculture & Food Sovereignty Highlights

Project Name	Comments
Brought sweet grass pots to Cannery	Took the 58 pots of sweet grass to the Cannery.
Center for Integrated Ag OCIFS tour prep	Arranged for the Center for Integrated Ag Tour to have lunch at Veteran Services. Contact Lamers and completed a quote request form to take the 35 participants to the tour locations. Arranged for cooking space for the chef to make white corn for the group.
Completed the site prep at 4-H land	Began moving workshop material, gates and doors removed, tables and chairs and gardening equipment back into the 4-H barn after DPW made the improvements. This will be used for the Youth Ag Workshops.
Created 3 tour agendas for OCIFS	Created tour agendas for Center for Integrated Ag 8.5.21; Feeding America 8.13.21; OCIFS Tour 8.16.21 and WOKSAPE Community Food System 9.28.21.
DPW got electricity to the 4-H barn	Met with Mitch from DPW to review the electrical set up and demonstrate the breaker box system at the 4-H barn for the upcoming 2022 youth workshops.
Experiential Learning Center	Had a Team meeting with NWTC, CMN and Menominee Nation re: the Experiential Learning Center and the collaborations that will need to be developed. Discussed the top 3 priorities the group wants to work on. Organized and typed up the notes and sent them to the group.
First Nations Grant Awarded	20,000 FNDI Grant Awarded to fully fund a design plan for the business plan for the Food Innovation Plan
Meat Processing Feasibility Study	Had a Teams meeting with Kathy Nyquist from New Venture Advisors re: starting the Meat Processing Feasibility study for Oneida. Created a contract and review request for Law office.
Mobile Meat Processing Facility Licensed	the Mobile Processing Unit was Licensed by DATCP
Promote Oneida and UN Report	Put together the information from the United Nations report and the WBAY interview of Vanessa Miller on Sept. 4, sent it out to key people for dissemination.
Sustainable Ag High School Students	11 students from the High Schools Sustainable Ag Class came to the orchard to learn about the varieties and harvesting, they then helped harvest that week and were able to take back apples to process themselves with the Cannery
Sweet Corn Donated to Pantry	143 dozen

Food & Agriculture Area Mission Statement

Create a sustainable, self-sufficient food system as a comprehensive approach to enhancing our community's health and wellness.



Oneida Nation Farm Food & Agriculture Activities

Oneida Nation Beef

Beef - Between July 1, 2021 and Sept. 30, 2021, how many individual customers ordered hanging beef?	Beef - Between July 1, 2021 and Sept. 30, 2021, how many total head of cattle were slaughtered (just the total number of head)?	Beef - Between July 1, 2021 and Sept. 30, 2021, what was total hanging weight of individual customer beef sales (do not include B&B)?	Beef - Between July 1, 2021 and Sept. 30, 2021, what was the total hanging weight of cattle slaughtered?	Beef - Between July 1, 2021 and Sept. 30, 2021, what was the to gross revenue generated from individual customer beef sales?
42	33	11,313	27,654	\$34,676

Oneida Nation Buffalo

Buffalo - Between July 1, 2021 and Sept. 30, 2021, how many individual customers ordered hanging buffalo?	Buffalo - Between July 1, 2021 and Sept. 30, 2021, how many total head of buffalo were slaughtered (just the total number of head)?	Buffalo - Between July 1, 2021 and Sept. 30, 2021, what was the total hanging weight of buffalo cattle slaughtered?	Buffalo - Between July 1, 2021 and Sept. 30, 2021, what was the to gross revenue generated from individual customer buffalo sales?
1	4	1,701	\$697

Oneida B&B Market

B&B Market - Between July 1, 2021 and Sept. 30, 2021, how many pounds of beef was sold at the B&B Market?	B&B Market - Between July 1, 2021 and Sept. 30, 2021, how many pounds of buffalo was sold at the B&B Market?	B&B Market - Between July 1, 2021 and Sept. 30, 2021, what was the gross revenue of all sales at the B&B Market?
2,359.07	687.46	\$20,309

Beef - Between July 1, 2021 and Sept. 30, 2021, how many calves were born?

53 heifer calves, 43 bull calves

Food & Agriculture Area Mission Statement

Create a sustainable, self-sufficient food system as a comprehensive approach to enhancing our community's health and wellness.



OBC Priorities Revenue Generation and Food & Agriculture

Project Name	Comments
Sales from Retail Location Deliveries 2020-2021	\$32,268.00 of revenue from product delivery to Packerland/Larsen Location and 54 One Stops
Processing fees waived since covid 2020-2021	\$6,626.50 waived in processing fees for community members and oneida programs (corn, meat, equipment usage, apples, etc.)
2020-2021 Grant Processed Raw Products	111 quarts processed tomatoe products 36 pints pickled beets
Corn Processed for Community Members for 2020-2021 year	1500 pounds
Jam Production 2020-2021	1652 8 ounzer units produced
Salsa Units Produced	171 units of salsa produced
2020-2021 White Corn to Oneida Nation School System	174 pounds of dehy ordered
Apple Products 2020-2021	174 units Apple Butter (1/2 pint) 203 units applesauce 366 units freeze dried apples 452 units dehydrated apple chips
Pickle Production 2020-2021	183 units of pickles 141 units of bread and nutter pickles
Community Raw Produce Processed 2020-2021	194 pints of raw product (apple sauce, tomatoes, etc.)
Pints of Maple Syrup Processed from sugar Camp 2020-2021	232 pints
2020-2021 products ordered by SEOTS	40units dehy 10 unitss pickles 25 units of cornbread 20 units Kanastole flour
Internal Order Sales 2020-2021	approximately \$28,000.00 in internal orders for the year (mush kits for department events, strawberry drink for events, corn soup for drive through events, various gift bags for department events, etc)
Corn Product Production 2020-2021	White Corn Dehy/Fresh Hull- 4280 Pounds Dehy-2893 pounds 1 pound Corn Bread-101 units Corn Bread Flour-1410 pounds Corn Bread-2708 units Corn Mush Flour-1272 pounds Mush flour #1-803 units All purpose flour-20 pounds Radisson Roasted Flour-60 pounds Anna John Dehydrated Corn-145 pounds