

# Oneida Environmental, Health, Safety, Land & Agriculture Division Quarterly Report FY22 1st Quarter



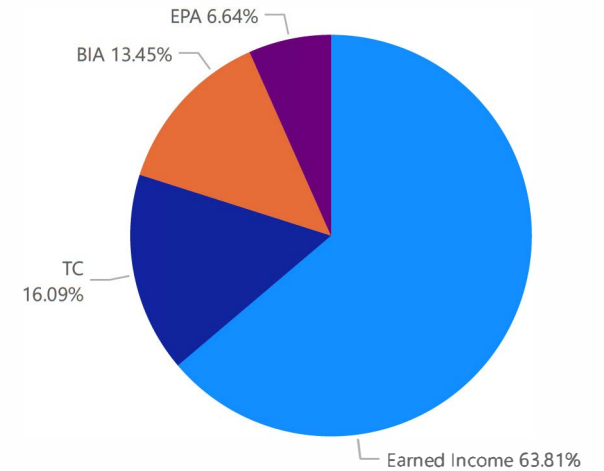
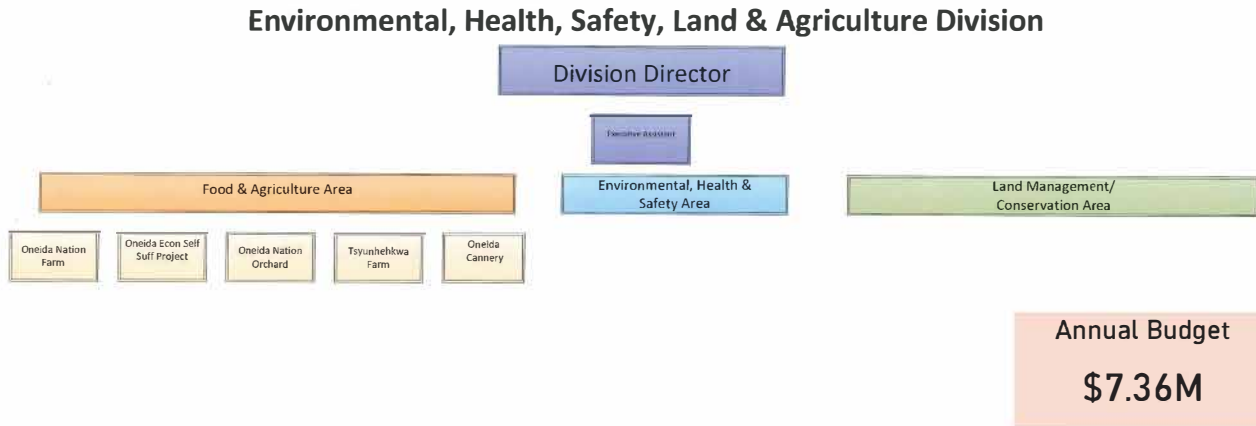
## Environmental, Health, Safety, Land and Agriculture Vision Statement (Desired future position)

By fulfilling our fiduciary responsibilities we manage, restore, reclaim and enhance the resources and assets of the Oneida Nation that protect human health and wellness, and the natural and built environment.

## Environmental, Health, Safety, Land and Agriculture Mission Statement (Defines what we do)

We provide high quality services that protect and improve the health of the human and natural environment, consistent with Oneida's culture and vision.

Amount by EHSLA Division Funding



Report Prepared By: Victoria Flowers, Environmental Compliance Coordinator

Report Submitted By: Nicole Rommel, EHSLA Division Director

# Oneida Environmental, Health, Safety, Land & Agriculture Division Quarterly Report FY22 1st Quarter



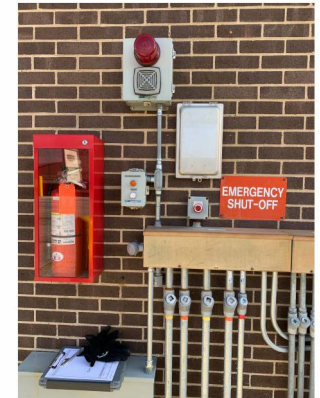
Staff Assisting an Injured Pelican



Improved Barnyard at Tsyunhehkwa to Reduce Runoff



Remote Controlled Mowing Keeps Staff Safe



Oneida UST Inspector Ensuring Equipment Works To Prevent Environmental Contamination



Completed Burn Mow for Prescriptive Burning to Control Invasive Plants



Fencing Installation for Winter Grazing

## Help Keep Our Deer Population Healthy

Putting yourself in harm, and taking the life of a deer is a very serious matter. It is important to ensure that all deer are healthy and safe. To ensure that all deer are healthy and safe, it is important to ensure that all deer are healthy and safe. To ensure that all deer are healthy and safe, it is important to ensure that all deer are healthy and safe.



### So, What Can I do?

- **Report Observations of Sick or Injured Deer.**  
If you notice any sick-looking deer (i.e., unusual behavior and/or, other signs), call and report it to the Conservation Department. Dead deer on the side of the road must be reported.
- **Limit Baiting Activities!**  
Baiting is the use of bait to attract deer. Baiting is a very serious matter. It is important to ensure that all deer are healthy and safe. To ensure that all deer are healthy and safe, it is important to ensure that all deer are healthy and safe.
- **Practice Proper Handling**  
When handling a deer, it is important to ensure that all deer are healthy and safe. To ensure that all deer are healthy and safe, it is important to ensure that all deer are healthy and safe.

**CONSERVATION DUMPSTER IS NOW AVAILABLE AND ACCESSIBLE**  
To help prevent the spread of Chronic Wasting Disease (CWD), double bag your deer and utilize the Conservation Department's double bagging station located at 1100 S. Oneida, WI 54155, for disposal of carcasses and other remains. This dumpster is for use by community members and can be accessed at any time. The fee is under \$100.00, including a receipt for your fee.



Tire Waterer for Cattle in Grazing Area

## EHS Area Goal Statement

We provide high quality services that protect and improve the health of the human and natural environment, consistent with Oneida's culture and vision.



## EHS Activities Supporting OBC Priorities

EHS Activities

**16,302.72**

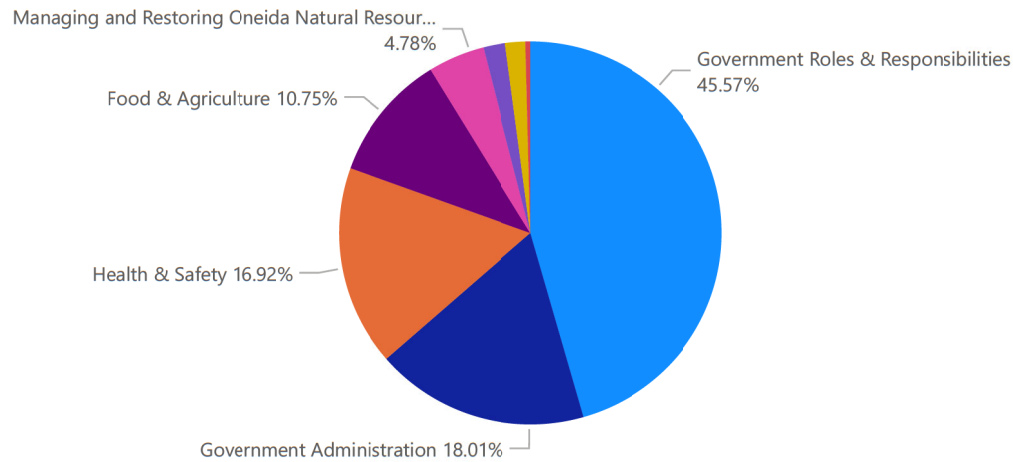
Acres Impacted

EHS Total Activities

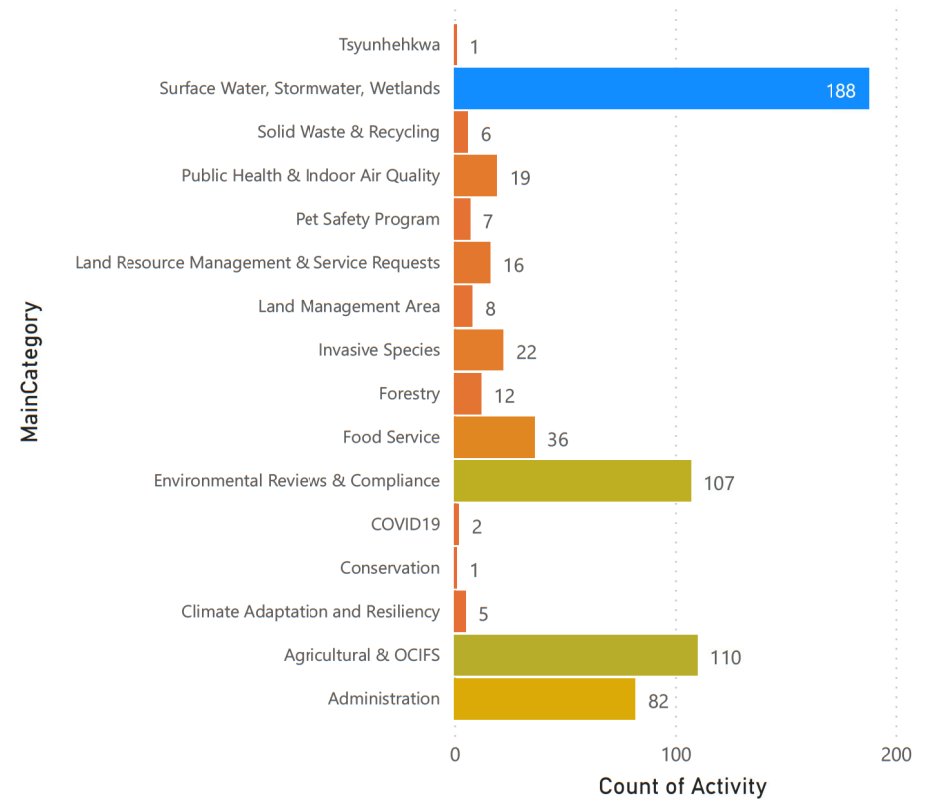
**1124**

Count of Activities

### Activities By Priority



### Count of Activities By Program Area



## EHS Area Mission Statement

We provide high quality services that protect and improve the health of the human and natural environment, consistent with Oneida's culture and vision.



## EHS Area Highlights

### EHS Food & Agriculture Highlights

#### Project Name

Grazing Field Day

ONF Winter Grazing Project - Fence Construction

Trout Creek Headwaters Restoration - Civil 3D

Update Agriculture Lands - ArcGIS

Winter Grazing Project

#### Agriculture Technical Assistance Acres Impacted

**15,404.91**

Acres Impacted

### EHS Resource Protection Highlights

#### Project Name

Accompanied WDNR on Industrial Stormwater Inspection

Audubon Project Partnership Planning

Black Ash information for Oneida Basket Guild

Briefed Leg. Affairs Director on WDNR PFAS and PFOS action

Called EPA re: Roffers development on Haven Place

Chicago Distric ACOE will be surveying Oneida Creek

Coordinate Tehassi as keynote for Wisconsin Wetland Association Conference

Coordinate the National Audubon Society photo shoot

Gave tour of Phase II Oneida Lake to FWS NRDA reps

NWTC Pollinator habitat partnership

Took part and presented at Lower Fox Monitoring Update mtg.

Town Hall Meeting

USFWS data request for wood turtle ESA listing

Hazardous & E-Waste	Pounds of Hazardous and E-Waste Disposed					Hazardous & E-Waste
	Hazardous Waste	Microwaves	Non-Hazardous	Refrigerant Devices	Brown County Charge	
	410	5	7,531	2	\$2,314.30	
<b>92</b>						<b>47</b>
Vouchers Issued						Vouchers Redeemed

## Land Area Mission Statement

Land Management is committed to building a responsible nation to enhance and strengthen the Oneida Nation's sovereignty by reacquiring land, expanding trust lands and distributing for community use.



## Land & Conservation Activities Supporting BC Priorities

### Fee to Trust Applications

**24,754.36**

Acres Impacted

### Probate Cases Worked On

**59**

Count of Activity

### Food & Agriculture

**390.28**

Acres Impacted

### Revenue Generation

**1,143.16**

Acres Impacted

### Housing

**326.15**

Acres Impacted

### Oneida Sacred Burial Grounds Assistance

**3**

### Activities Supporting Food & Agriculture

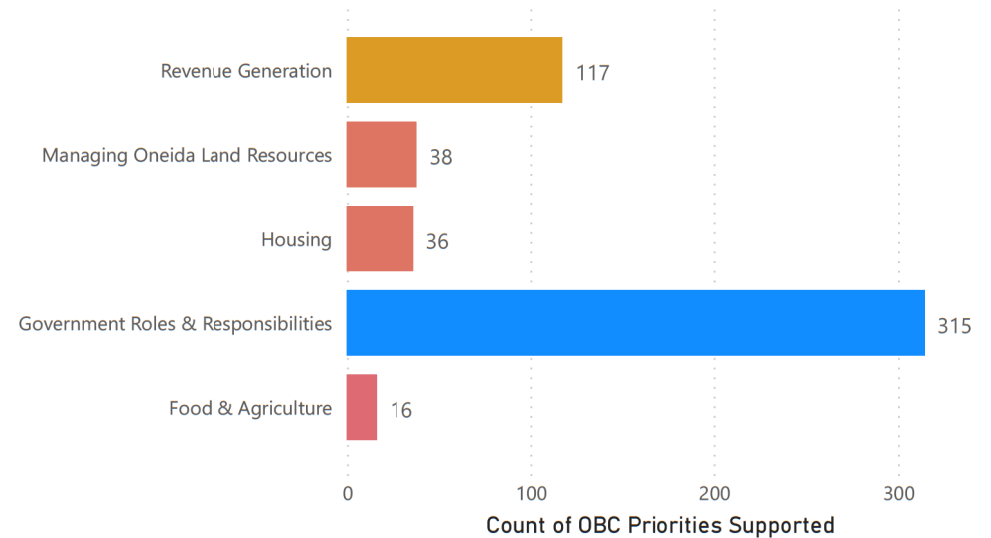
Activity	Count	Acres Impacted
Agricultural Lease Fee Land	11	211.47
Agricultural Lease Trust Land	2	139.81
Land Acquisition Agricultural	3	39.00
<b>Total</b>	<b>16</b>	<b>390.28</b>

### Revenue Generation

Activity	Count	Acres Impacted
Commercial Lease Fee Land	89	833.77
Commercial Lease Trust Land	19	291.15
Harvest License and Permit Sales and Issuance	3	
Land Acquisition Commercial	4	10.08
Land Use Agreement	1	
Land Use Permit Trust Land	1	8.18
<b>Total</b>	<b>117</b>	<b>1,143.16</b>

### Activities Supporting OBC Priorities

OBC Priorities Supported





## Land Area Mission Statement

Land Management is committed to building a responsible nation to enhance and strengthen the Oneida Nation's sovereignty by reacquiring land, expanding trust lands and distributing for community use.

# Land & Conservation Activities Supporting BC Priorities

## Government Roles & Responsibilities & Managing Oneida Land Resources

Activity	Count	Acres Impacted
Cemetery Plot Applications & Sales	1	38.00
Commercial Lease Fee Land	89	833.77
Commercial Lease Trust Land	20	291.15
Demolition Fee Land	16	218.28
Document Recording - Other	12	
Document Recording Lease	5	
Encroachments Fee Land	1	37.29
Encroachments Trust Land	4	32.70
Fee to Trust	37	24,754.36
Individual Trust Land - Appraisal	1	
Land Acquisition Commercial	4	10.08
Land Acquisition Conservation	1	32.61
Land Acquisition HIP	8	
Land Commission	32	0.92
Land Use Agreement	1	
Land Use Permit Trust Land	1	8.18
Locate Property Boundaries Fee Land	1	6.41
Locate Property Boundaries Trust Land	2	16.35
Management Team Meeting	4	
Probate Individual Trust	26	6.00
Probate Other	34	
Property Complaint Fee Land	1	
Records Management	4	19.72
Residential Lease Fee Land	4	38.51
Residential Lease Trust Land	9	69.37
Service Agreement Municipality	2	
Title Search Fee Land	1	0.48
Title Search Trust Land	39	87.33
<b>Total</b>	<b>360</b>	<b>26,501.48</b>

Land Management is committed to building a responsible nation to enhance and strengthen the Oneida Nation's sovereignty by reacquiring land, expanding trust lands and distributing for community use.

## OBC Priority Government Roles & Responsibilities and Revenue Generation Conservation

Project Name	Comments
12 sportsman license mailed	
Data enter License sale	201 Sportsman License Requests/Application were data entered into Excel Data sheet
Data Enter Sportsman License info	398 Sportsman License request/apps were entered into Excel data base
Cemetery Fall Clean Up	Cemetery Fall Clean up, is disposing of all broken, weathered, and/or dead plants/flowers, from each plot.
Cemetery Fall Clean Up	Clean the east side of the cemetery, around the headstones/monuments
3334 W. Mason	Cleaned up and removed woody debris from contract hazardous tree removal.
APHIS CWD Conference and Webinar	CWD Data collection and techniques. Monitoring funding process. Informational seminars.
WCTWS Webinar - Understanding Ojibwe Treaty Rights	Jonethan Gilbert PH.D. - GLIFWC
Green Bay Parks and Rec Collaborative Mtg	Meeting with Green Bay Parks/Rec to discuss efforts to develop parks and trails system plans, in an effort to better serve the community.
W1775 Pearl St.	Remove hazard trees
143 Shenandoah	Removed hazardous tree at residence. Severly split, with heavy lean towards the home structure.

## Food & Agriculture Area Mission Statement

Create a sustainable, self-sufficient food system as a comprehensive approach to enhancing our community's health and wellness.



A good mind. A good heart. A strong fire.

## Food & Agriculture Activities Support BC Priorities

Activities Supporting  
Food & Agriculture

88

Activities

Activities Supporting  
Government Roles &  
Responsibilities

19

Activities

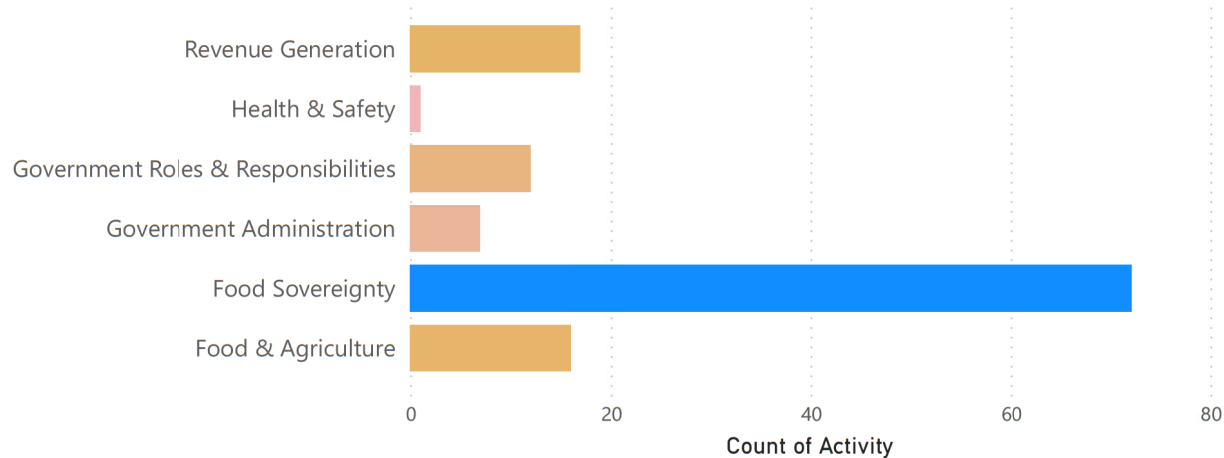
Outreach, Education &  
External Collaboration

16

Activities

### Activities By Priority

OBC Priorities Supported



### Activities Supporting Food & Agriculture

Activity	Count of Activity
Agricultural equipment, repair and maintenance	1
Agricultural Outreach and Education	5
Agricultural Product Order	3
Agriculture Technical Assistance	4
Beef Production & Sales	1
Beef Sales & Donations	4
Buffalo Sales or Donations	3
Chicken Production & Sales	1
External Agricultural Collaborations	11
External Orders	1
Food Sovereignty and Security Projects	10
Grant Administration	9
Hemp Program	3
Indigenous Diet & Healing Families Reached	1
Information Management	8
Internal Program Orders	1
Jams and Preservative Production	1
Oneida Farmers Market	3
Orchard Distribution and Sales	2
Reporting	6
Retail Orders	1
Technical or Professional Workgroup	1
Training or Webinar	12
Tsyunhehkwa Community Outreach	2
Tsyunhehkwa Program Administration, Development and Evaluation	2
White Corn Activities	2
White Corn Processing	2
Workforce Management	14
Youth Agricultural Workshops	3
Youth Mentorship	1
<b>Total</b>	<b>118</b>



## Food & Agriculture Area Mission Statement

Create a sustainable, self-sufficient food system as a comprehensive approach to enhancing our community's health and wellness.



## OBC Priority Food & Agriculture & Revenue Generation Tsyunhehkwa

Project Name	Comments
Assisted with White Corn	
Uw WPP Community Impact Grant Awarded	\$1,000,000 grant awarded that will fund programmatic efforts for the next 5 years for food sovereignty programming being health care for the community
Chicken processing	1 family butchered
Total Families for Trade and Barter Project	11 total families participated
Outside Organizations Partnered with	12 total
Tours and presentations total for 1st quarter	17 total tours and presentations
White Corn Delivery Total to the Cannery	2,100 total pounds delivered to the Cannery for processing
Total Animals Processed	6 heads processed-5 animals sent to the Emergency Pantry
White Corn Harvest For Season	Finished Picking corn on 12/17/21
Meet with Tsyunhehkwa Manager and Food and Ag Area Manager	Meet on updates from Tsyunhehkwa

## OBC Priority Food & Agriculture & Revenue Generation Oneida Community Integrated Food Systems

Project Name	Comments
WI Secretary of Ag Tour	Completed the agenda, verified the WI Secretary of Agriculture tour with the OCIFS members that will participate and put together gift bags for the tour participants and dropped them off at NHC for Jesse Padron.
Food Sovereignty Strategic Plan and OBC	Attended the OBC Team meeting regarding moving forward on the Food Sovereignty Strategic Plan.
Tour of OCIFS	Coordinated the WI Secretary of Agriculture's visit on Monday, Oct. 11 with the various food related entities and put together an agenda for the tour.
WTCAC, LEECH Lake tour of OCIFS	Had a Zoom meeting with Nikki Crowe re: WTCAC and Leech Lake Tribal tour of OCIFS in late November.
Arrange OCIFS tour	Had Team meeting with Nikki Crowe to organize a tour for folks from Leech Lake with several OCIFS members.
Meat Processing Feasibility Study	Met with Don Miller re: the Meat Processing Feasibility Study. Got the contract agreement back from New Ventures and sent up to OBC for signature.
Building a Food Action Plan document	Reviewed the New Food Forum's 25-page document entitled 'Building a Food Action Plan' and made comments and notes for the meeting later today.

## Food & Agriculture Area Mission Statement

Create a sustainable, self-sufficient food system as a comprehensive approach to enhancing our community's health and wellness.



A good mind. A good heart. A strong fire.

# OBC Priority Food & Agriculture & Revenue Generation Oneida Nation Farm

## Highlights Supporting Revenue Generation and Health & Safety

Project Name	Comments
Internal Program Sales 1st Quarter	Radisson-379 pounds \$2560 Cannery-100 pounds \$750 Elder Food Box-933 pounds \$7,000 Food Distrubution Project-671 pounds \$4705
Internal Program Beef Sales 1st Quarter	Radisson-300 pounds \$1500 Anna John-200 pounds \$1,000 Cannery-500 pounds \$1,995 Elder Food Boxes-930 pounds \$4640 Food Distribution Project-2372 pounds \$10,998
Corn harvest and sales 1st quarter	corn silage 30,482 tons \$1,099,371 dry corn 15,500 bushels \$62,344 dry corn stored in farm bins 24,800 busehels
Retail Store Beef Sales 1st Quarter	674 pounds total \$4, 989
Soybean harvest and sales 1st quarter	52,095 bushels \$617,335 22,399 bushels stored in farm bins
Retail tore Bison Sales 1st Quarter	268 \$2560 total
Whole Sale Beef Sales 1st Quarter	15 animals 44 total cusotmer (23 tribal members)
Beef sales from Beef and buffalo Market	\$32,636.23 5707 pounds
Buffalo sales from Beef and Buffalo Market	\$24,012.00 5707 pounds

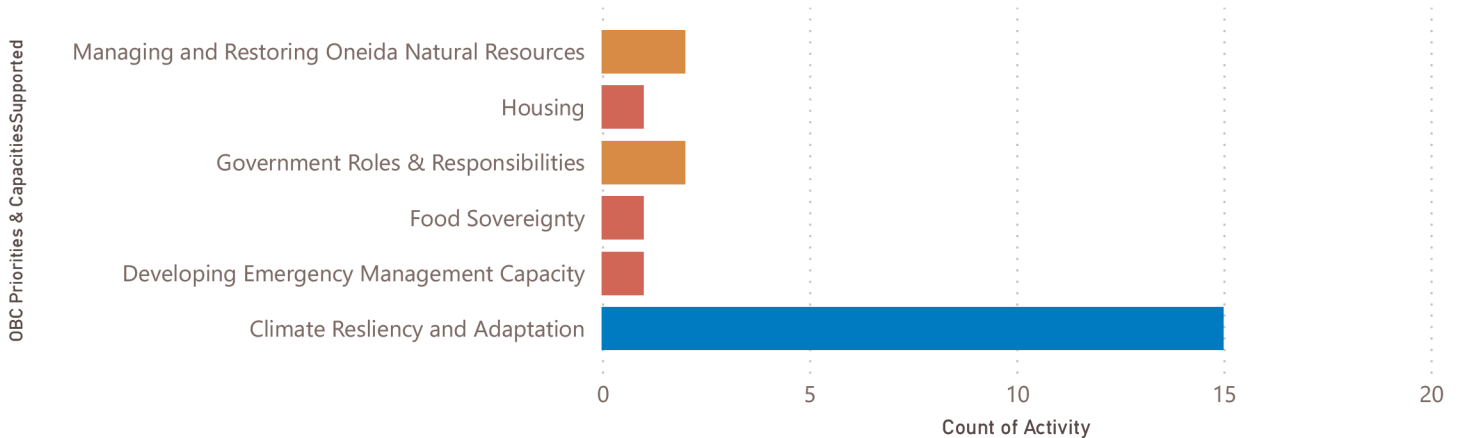
# OBC Priority Food & Agriculture & Revenue Generation Cannery

Project Name	Comments
Acitivites conducted with the Oneida Nation High School Sustainable Ag Class	Beef Jerky making, Wild Grape Harvesting and Jam making, apple sauce production, fruit roll up production, and snow shoe activities
1st Quarter Total Oneida Retail Deliveries (Sales)	\$11,972.33 TOTAL
Total External Orders	<ul style="list-style-type: none"> <li>•Radisson ordered 147lbs of roasted four. Used for dishes on their menu.</li> <li>•Chicago Art School- Community member attending this institution participate in a Decolonialization dinner and the cannery prepared mush, strawberry drink and corn soup for her and assisted with the info for her presentation for 150 meals.</li> </ul>
1st quarter total Internal Programs and Event Sales	10/15/2021 TANF order 300qts cs 300 CB- Drive thru Event-\$5,700.00 11/4/2021 Elderly services- Drive thru Even-\$4,712.50 11/4/2021 Anna John 100 dehy-\$1,000.00 11/4/2021 Laurie Becker- Family Services Bike give a way-\$1,600.00 10/27/2021 Cookie Kits- Language Immersion-\$100.00 11/22/2021 Pantry-apple sauce corn bread- Holiday -\$783.00 11/23/2021 School System- 25lbs dehy-\$250.00 11/23/2021 anna john 24 mini cornbread-\$48.00 12/8/2021 Chicago Art School decolonized Dinner- Mush- Strawberry, corn soup-\$1,427.79 12/8/2021 Gift Boxes- 13 boxes-\$325.00  \$15,946.29 TOTAL
2020-2021 Apple Chips to Oneida School System	220 units (bags) of apple chips
Total White Corn Processed 1st Quarter	2249 total pounds of corn processed. Broken down White Corn Dehy-Fresh Hull-1284 pounds Cornbread flour-825 pounds Corn Mush Flour-140 pounds
Indiegnous Diet and Healing Activites for 1st Quarter	<p>Decolonized Thanksgiving meal- Traditional, local and Oneida ingredients put together in kit for a drive through pickup. Participants than use ingredients in the kits to create dishes and share recipes with mistakes and successes.</p> <p>Jerky Workshop Kit- Participants received a dehydrator, jerky gun, seasonings and meat. They take the kit home and learn through a video that we created and share their progress and return equipment for future rental needs. Cannery- now has 30 dehydrator and Jerky kits for community rental outside of grant participants.</p> <p>•Sage Kit- locally Oneida Grown California sage grown at tsyunhwkwa in their hoop house. From 15 plants that survived we harvest enough sage to fill 80 ½ gallon jars that participants pickup and will go with the smudge plates we will be doing with them in March.</p>
Total Corn Product Production Made From Corn Processed	Deydrated-1261 pounds Corn breads 1 pound-37 Corn Breads-2775 Mush Flour 1 pounds-71  The Cannery processed almost double the amount of cornbread in this 1st quarter than it has ever processed before

# Energy Program

## OBC Priority Government Roles & Responsibilities and Revenue Generation

OBC Priorities & Capacities Supported



Summary of Activities

Project Name	Comments
Strategic Energy Vision	Develop an energy vision to promote conversation about future energy work.
Economic Development Administration	Fill out grant authorization form for EDA Indigenous Communities
Tribal Utility Authority	High level discussion about Tribal Utility Authority status for Oneida Nation.
Glacierland Resource Conservation and Development board meeting	I am a board member for RC&D. They provide grant writing and administration for grazing, invasive species, resource conservation, and forestry.
SDTF maintenance	Inspect inverters.
Economic Development Administration	Investigate the EDA Indigenous Communities NOFA.
Hazard mitigation grant	Notified of award of the FEMA grant to perform microgrid and utility authority feasibility for Central Oneida.
Midwest Tribal Energy Resources Association	Participate as board member on MTERA board
Public Service Commission of Wisconsin	Participate on the Interconnection Update Team for PSCW-119.
Wisconsin Clean Energy Program	Participate on the Working Team to provide the Tribal perspective on energy planning and projects in Wisconsin.
Fleet Electrification	Planning meeting with Faith Technologies to discuss EV charging infrastructure. Casino, Retail, and Facilities staff in attendance.
SDTF production	Summarize 4 years of solar electric production.
Fleet Electrification	Webinar to discuss strategies for transitioning fleets to electric
SDTF Inspection	Weekly monitoring of Solar Development on Tribal Facilities (SDTF) project.