

ONEIDA

PROGRAM GUIDE

ONEIDA
COMMUNITY

SUMMER 2019



www.oneidacommunityeducationcenter.org

REGISTER
online!



CONTENTS

1 - 4	CALENDAR OF EVENTS
5	ONEIDA CAMP LISTING
6 - 8	CLASSES AND EVENTS
9 - 13	ONEIDA CAMP ADS
25	CONTACTS

Summer is the opportune time to explore nature, find innovative talents, gain new friendships, and explore opportunities. From camps and classes to special events and activities, departments across the Nation are offering children the opportunity to build skills and confidence to explore passions and interests. Take the time to check out program offerings available for all ages, where you will feel a sense of community and well-being.

CEC Summer Hours
June 1-August 31
Monday-Friday, 8:00 a.m. - 4:30 p.m.

REGISTRATION INFORMATION

Look for easy to follow registration steps online at:

<https://oneidacommunityeducationcenter.org/online-registration/>.

Our programs are offered at a fraction of the actual costs and significantly less than the average cost of similar programs in the Green Bay area because of funding from tribal contributions, grants, and fees collected.

1. **Payment Policy:** All fees and paperwork must be paid in full by cash, check, or debit/credit card at the time of registration in order to reserve a spot in programs and classes.
2. **Wait List:** If a class is full, you will automatically be placed on a wait list. You will be contacted if space becomes available before the start of class.

3. **Cancellation Policy:** Register early. Some activities have limited availability and fill quickly.
 - a. If classes do not have a minimum number of registrants a week before class starts, the class may be cancelled. A full refund or credit will be given for any cancelled classes.
 - b. If you are unable to attend your scheduled class please call or email the CEC. Cancellations made at least 3 business days before the day class is scheduled are eligible for refund.
4. **No Show Policy:**
 - a. With our free classes/events that require registration, please notify us if you are not able to attend. Many of these classes/events have limited space and a wait list. Please don't take a seat from someone else that wants to attend if you are unable. The CEC reserves the right to limit registration for free classes and events from those who habitually do not show to classes/events.
5. **Refund Policy:**
 - a. **Credit Cards**—Credit cards may be refunded if the Community Education Center is notified a minimum of 3 business days before class starts. After that, only class credits are given if notice is received before the start of class. Credits will not be issued if notice is received after the start of class.
 - b. **Cash/Check**—Cash or check payments are given class credits if the Community Education Center is notified a minimum of 3 business days before class starts. Credits will not be issued if notice is received after the start of class.



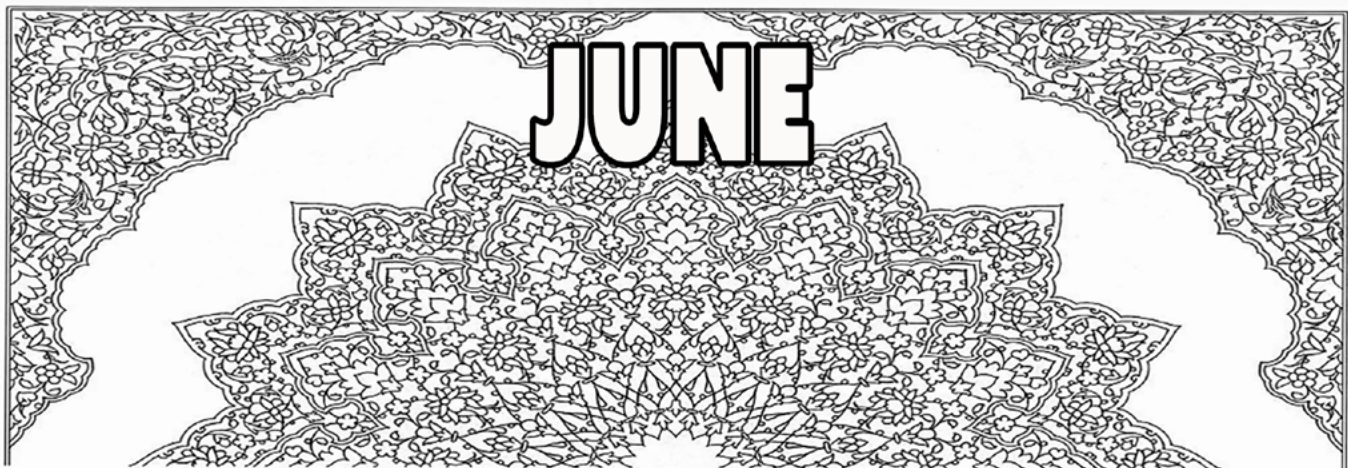
SUNDAY	MONDAY	TUESDAY	WEDNESDAY	THURSDAY	FRIDAY	SATURDAY
REGISTRATION REQUIRED FOR ALL CLASSES	PURPLE - CLASS AT ARTS	BLUE - CLASSEVENT AT CEC	1	2 IROQUOIS RAISED BEADED COIN PURSE 530 PM SAFETY IN FORAGING (MANDATORY PREREQUISITE FOR FORAGING CLASSES) 530 PM	3	4 MINORS TRUST PROCESS 100 PM
5	6 IROQUOIS RAISED PIN CUSHION 530 PM	7 IROQUOIS RAISED PIN CUSHION 530 PM HAUDENOSAUNEE AMBASSADORS 530 PM	8	9 IROQUOIS RAISED PIN CUSHION 530 PM IROQUOIS RAISED BEADED COIN PURSE 530 PM HAUDENOSAUNEE AMBASSADORS 530 PM	10	11
12 MOTHERS DAY	13 MENTAL HEALTH FOR WOMEN AND THOSE WHO LOVE THEM 500 PM	14 HAUDENOSAUNEE AMBASSADORS 530 PM	15	16 IROQUOIS RAISED BEADED COIN PURSE 530 PM HAUDENOSAUNEE AMBASSADORS 530 PM	17	18
19	20 IROQUOIS RAISED BEADED SCISSOR CASE 530 PM	21 IROQUOIS RAISED BEADED SCISSOR CASE 530 PM	22	23 IROQUOIS RAISED BEADED COIN PURSE 530 PM IROQUOIS RAISED BEADED SCISSOR CASE 530 PM	24	25
26	27 MEMORIAL DAY	28	29	30	31	



**ONEIDA COMMUNITY EDUCATION CENTER
ONEIDA NATION ARTS PROGRAM
CALENDAR OF EVENTS**

REGISTER ONLINE AT: ONEIDACOMMUNITYEDUCATIONCENTER.ORG





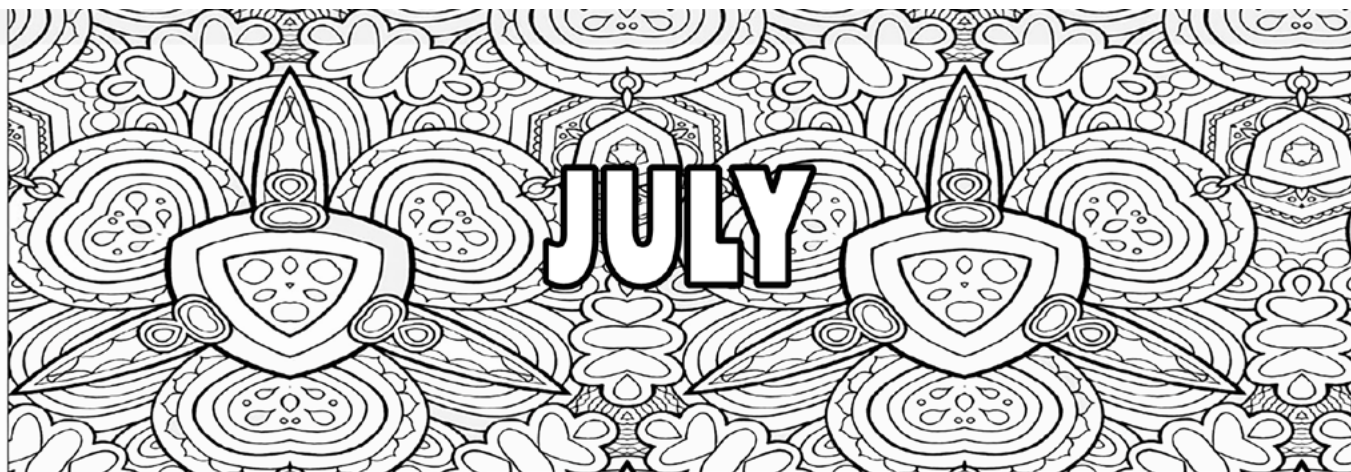
SUNDAY	MONDAY	TUESDAY	WEDNESDAY	THURSDAY	FRIDAY	SATURDAY
REGISTRATION REQUIRED FOR ALL CLASSES	PURPLE = CLASS AT ARTS	BLUE = CLASS/EVENT AT CEC	* PREREQUISITE REQUIRED			1
2	3	4 MINORS TRUST PROCESS 5:00 PM	5	6 INTRO TO FORAGING & PLANT IDENTIFICATION 5:30 PM *	7	8
9	10 BREAST CANCER: THE BEST PROTECTION IS EARLY DETECTION 5:00 PM KLU ORIENTATION 5:00 PM	11 BUDGETING 5:00 PM	12	13	14	15
16 FATHERS DAY	17	18	19 PIANO LESSONS 1:00 PM	20 FORAGING FOR EDIBLES PLANTS & FRUITS 5:30 PM *	21	22
23	24 ARTS CAMP 1:00 PM	25 ARTS CAMP 1:00 PM	26 ARTS CAMP 1:00 PM PIANO LESSONS 1:00 PM	27 ARTS CAMP 1:00 PM	28 ARTS CAMP 1:00 PM	29



**ONEIDA COMMUNITY EDUCATION CENTER
ONEIDA NATION ARTS PROGRAM
CALENDAR OF EVENTS**

REGISTER ONLINE AT: ONEIDACOMMUNITYEDUCATIONCENTER.ORG





SUNDAY	MONDAY	TUESDAY	WEDNESDAY	THURSDAY	FRIDAY	SATURDAY
REGISTRATION REQUIRED FOR ALL CLASSES	1	2	3 PIANO LESSONS 100 PM	4 INDEPENDENCE DAY	5	6
7	8 DESTINATION DISCOVERY 1030 AM SMOKE FREE SPACES: HOW TO PROTECT LOVED ONES FROM TOBACCO SMOKE 500 PM	9 DESTINATION DISCOVERY 1030 AM	10 DESTINATION DISCOVERY 1030 AM PIANO LESSONS 100 PM	11 DESTINATION DISCOVERY 1030 AM	12 DESTINATION DISCOVERY 1030 AM	13
14	15 MOC CAMP 800 AM	16 MOC CAMP 800 AM	17 MOC CAMP 800 AM PIANO LESSONS 100 PM	18 INTRO TO FUNGI IDENTIFICATION 530 PM * HOW DOES "BEIKI" FIT INTO OUR CULTURE 530 PM MOC CAMP 800 AM	19	20
21	22 MOC CAMP 800 AM	23 MOC CAMP 800 AM	24 MOC CAMP 800 AM PIANO LESSONS 100 PM	25 MOC CAMP 800 AM	26	27
28	29 MOC CAMP 800 AM MOC JR. CAMP 100 PM	30 MOC CAMP 800 AM MOC JR. CAMP 100 PM	31 MOC CAMP 800 AM MOC JR. CAMP 100 PM	PURPLE CLASS AT ARS	BLUE CLASSEVENT AT CEC	* PREREQUISITE REQUIRED



ONEIDA COMMUNITY EDUCATION CENTER ONEIDA NATION ARTS PROGRAM CALENDAR OF EVENTS

REGISTER ONLINE AT: ONEIDACOMMUNITYEDUCATIONCENTER.ORG



AUGUST

SUNDAY	MONDAY	TUESDAY	WEDNESDAY	THURSDAY	FRIDAY	SATURDAY
REGISTRATION REQUIRED FOR ALL CLASSES	PURPLE CLASS AT ARTS	BLUE CLASS/EVENT AT CEC	* PREREQUISITE REQUIRED	MOC CAMP 8:00 AM 1 MOC JR. CAMP 1:00 PM FORAGING FOR EDIBLE FUNGUS 5:30 PM *	2	3
4	5	6 NATIVE ARTIST PROFESSIONAL DEVELOPMENT TRAINING 8:30 AM	7 NATIVE ARTIST PROFESSIONAL DEVELOPMENT TRAINING 8:30 AM	8	9	10
11	12 HAUDENOSAUNEE WOMEN THEIR ROLES RESPONSIBILITIES AND INFLUENCE 5:00 PM	13 HAUDENOSAUNEE WOMEN THEIR ROLES RESPONSIBILITIES AND INFLUENCE 5:00 PM BUDGETING 5:00 PM	14 HAUDENOSAUNEE WOMEN THEIR ROLES RESPONSIBILITIES AND INFLUENCE 5:00 PM	15 HAUDENOSAUNEE WOMEN THEIR ROLES RESPONSIBILITIES AND INFLUENCE 5:00 PM	16	17
18	19 HAUDENOSAUNEE WOMEN THEIR ROLES RESPONSIBILITIES AND INFLUENCE 5:00 PM	20 HAUDENOSAUNEE WOMEN THEIR ROLES RESPONSIBILITIES AND INFLUENCE 5:00 PM	21 HAUDENOSAUNEE WOMEN THEIR ROLES RESPONSIBILITIES AND INFLUENCE 5:00 PM	22 HAUDENOSAUNEE WOMEN THEIR ROLES RESPONSIBILITIES AND INFLUENCE 5:00 PM PRESERVATION & COLLECTION EDIBLE PLANTS FUNGUS & NUTS 5:30 PM	23	24
25	26	27	28	29	30	31



ONEIDA COMMUNITY EDUCATION CENTER ONEIDA NATION ARTS PROGRAM CALENDAR OF EVENTS

REGISTER ONLINE AT: ONEIDACOMMUNITYEDUCATIONCENTER.ORG



Oneida Summer Camps Listing

NAME	AGES	DATES	PAGE
Recreation Summer Program	Varies	Registration May 1	-
Art Camp	9 - 14	June 24 - 28	12 - 13
Paddle Camp	9 - 13	June 24 - 28	10
Wellness Camp	12 - 14	June 24 - 27	10
Climbing Camp	9 - 13	July 8 - 12	10
Destination Discovery Camp	10 - 12	July 8 - 12	12 - 13
Fitness Camp	6 - 8	July 15 - 18	9
MOC Camp	9 - 16	July 15 - August 2	12 - 13
Adventure Camp	9 - 13	July 22 - 26	10
MOC Jr. Camp	7 - 8	July 29 - August 1	12 - 13
Sports Conditioning Camp	6 - 8	August 5 - 8	11

Do

Good

Now

KLU Summer Program

Seeking teens interested in Oneida language, culture, music, and doing good in the community.

Ka'nithotiyása Latiwytéhtas Ukwehuwehnéha (KLU) Summer Program is for teens, ages 14-16.

KLU ORIENTATION (ATTENDANCE REQUIRED)

JUNE 10, 5:00 - 6:00 PM

LOCATION: CEC

*Learn more about financial incentives based upon funding availability, participation hours, and participants' attitudes.

KLU PROGRAM

JULY 24 - AUGUST 23 (DAYS AND TIMES VARY)

Counts towards HS required community service hours.

Learn about our community, tribal departments, resources, environment, culture and people.

Meet youth from other schools.



A good mind. A good heart. A strong fire.

Register online at <https://oneidacommunityeducationcenter.org/>
Questions? Contact Gabrielle Metoxen gmetoxe2@oneidanation.org

Classes and Events

Register online at oneidacommunityeducationcenter.org

May

Safety in Foraging

Learn some of the common potential dangers you might face when out foraging and how to eliminate or mitigate those risks.

****This is a prerequisite for the Foraging Workshop.***

Instructor: Matt Normansell

May 2
5:30 PM – 6:30 PM

Location: CEC
Ages: 14 +
FREE

Iroquois Raised Beaded Coin Purse - Session 2

Participants will learn the basic techniques for beading flowers, leaves, birds, strawberries, and butterflies. The coin purse will be made of velvet and lined with calico fabric. Basic supplies included in class fee.

Instructor: Christine Klimmek

May 2, 9, 16, 23
5:30 PM – 7:30 PM

Location: Arts Cottage
Ages: 16+
General Fee: \$60
Tribal / Employee Fee: \$30

Minors Trust Process

Deadline to claim/defer your Minors Trust fund is July 1, 2019. Do you know what you need to claim/defer? Do you know what claim/defer means? Do you know the tax implications when claiming your Minors Trust Fund? Join the Oneida Trust Enrollment Department and learn what you or your child's options are with this year's Minors Trust Fund Distribution.

Instructor: Keith Doxtator, Brent Truttman

May 4
1:00 PM – 2:00 PM

Location: CEC
Ages: 16+
FREE

Iroquois Raised Pin Cushion

Students will learn to construct an Iroquois style pin cushion using velvet, beads, needles and thread. The pin cushion will be beaded using Iroquois raised beading techniques.

Instructor: Sandy Wescott-Gauthier

May 6, 7, & 9
5:30 PM – 7:30 PM

Location: Arts Cottage
Ages: 16+
General Fee: \$30
Tribal / Employee Fee: \$15

Haudenosaunee Ambassadors

Today, more than ever, it is important for us to be an ambassador of our People/Nation. Whether you are considering running for Miss Oneida, doing presentations in the schools, or just wanting to present yourself with confidence as a Haudenosaunee, this class will explore the Good Mind, presentation styles, and information you will need to represent yourself, clan, and Nation.

Instructor: Sadie Buck

May 7, 9, 14, 16
5:30 PM – 7:30 PM

Location: CEC
Ages: 12+
General Fee: \$20
Tribal / Employee Fee: \$10

Women's Health Series: Mental Health for Women and Those Who Love Them

Learn about depression and anxiety.

Instructor: Leah Fuss, Andrea Kolitsch

May 13
5:00 PM – 6:00PM

Location: CEC
Ages: 16+
FREE

Iroquois Raised Scissor Case

Students will construct a case for holding a pair of scissors using velvet, calico fabric, beads, thread and needles. Students will also learn techniques and patterns for doing Iroquois Raised Beadwork on the case.

Instructor: Sandy Wescott-Gauthier

May 20, 21, 23
5:30 PM – 7:30 PM

Location: Arts Cottage
Ages: 16+
General Fee: \$50
Tribal / Employee Fee: \$25

Classes and Events

Register online at oneidacommunityeducationcenter.org

June

Minors Trust Process

Deadline to claim/defer your Minors Trust fund is July 1, 2019. Do you know what you need to claim/defer? Do you know what claim/defer means? Do you know the tax implications when claiming your Minors Trust Fund? Join the Oneida Trust Enrollment Department and learn what you or your child's options are with this year's Minors Trust Fund Distribution.

Instructor: Keith Doxtator, Brent Truttman

June 4
5:00 - 6:00 PM

Location: CEC
Ages: 16+
FREE

Foraging Workshop (Safety in Foraging Required as Pre-Requisite)

Introduction to Foraging & Plant Identification

Find out about the basics of foraging, foraging mindset, the dangers of wishful thinking, basic plant anatomy in the field, and how to identify some common late spring edibles.

Foraging for Edibles – Plants & Fruits

Identifying common wild edibles in early summer. We'll explore edible and poisonous wild berries, discuss nutritional benefits of wild foods versus store bought items, and discover the benefits of eating invasives. Learn how foraging can help protect the environment by controlling potentially damaging species without chemicals.

Introduction to Fungi Identification

What are Fungi? Demystifying common terms and learn mushroom anatomy and life cycles in the field. Discover common look a likes and poisonous mushrooms and how to identify common seasonal edible mushrooms.

Foraging for Edible Fungi

Learn to identify some common groups (Genera) of fungi, such as boletes, milk caps, polypore. We'll discuss mushroom foraging sustainability, habitats, and Mycorrhizal fungi and their tree hosts. Participants will take home a sample of dried edible mushrooms.

Preservation & Collection – Edible Plants, Fungi, & Nuts

Explore the harvesting techniques and transportation of finds while learning about the short-term storage techniques to preserve freshness. This class includes an introduction to pickling, drying mushrooms and herbs, and fruit leathers. Participants will take home a sample of Porcini Salt.

Instructor: Matt Normansell

Session 1: June 6
5:30 PM – 8:00 PM

Session 2: June 20
5:30 PM – 8:00 PM

Session 3: July 18
5:30 PM – 8:00 PM

Session 4: August 1
5:30 PM – 8:00 PM

Session 5: August 22
5:30 PM – 8:00 PM

Location: Varies
Ages: 14+
General Fee: \$150
Tribal / Employee Fee: \$75

Women's Health Series: Breast Cancer – The Best Protection is Early Detection

Learn the signs and symptoms of breast cancer, screening recommendations, and ways on how to reduce your risk.

Instructor: Leah Fuss, Andrea Kolitsch

June 10
5:00 PM – 6:00PM

Location: CEC
Ages: 16+
FREE

Budgeting

Learn practical tools and helpful tips to create a monthly budget, monitor spending, how to save, and plan for large expenses.

Instuctor: Doug Younkle

June 11
5:00 PM - 6:00 PM

Location: CEC
Ages: 16+
FREE

Piano Lessons

The Oneida Nation Arts Program offers an exciting way to encourage students to develop a background in music and provides community members the opportunity to enhance their voice and piano skills. This program has the potential to mend our cultural bridge. The goal of our program is to bring the Oneida community together as one family through music.

Instructor: Beth Schultz

June 19 – July 24
1:00 - 5:00 PM

Location: Arts Cottage
Ages: 7+
General Fee: \$160
Tribal / Employee Fee: \$150
Native American Student
Fee (Ages 6-17): \$40

Classes and Events

Register online at oneidacommunityeducationcenter.org

July

How Does "Reiki" Fit Into Our Culture?

Let's look at our traditional ways of healing and today's Reiki healing methods in a contemporary educational setting. We'll explore viewpoints from various backgrounds and insights from knowledge keepers and an understanding where we are today. Reiki is a bridge to help our people reconnect to their spirituality. The "Good Mind", ideal of Haudenosaunee personality, is what the culture encourages, and investing educational and philosophical energy into understanding and applying those ideals in a contemporary context will only encourage an ongoing cultural renaissance of transformation". - Robert Antone

Instructor: Latsiklanunha Hill, Susan Reiter

July 18
5:30 PM – 7:00 PM

Location: CEC
Ages: 10+
FREE

Women's Health Series: Smoke Free Spaces - How to Protect Your Loved Ones from Tobacco Smoke

Learn how environmental tobacco smoke impacts health – especially as it relates to children. Find out ways on how to create smoke free spaces.

Instructor: Leah Fuss, Andrea Kolitsch

July 8
5:00 - 6:00 PM

Location: CEC
Ages: 16+
FREE

August

Native Artist Professional Development Training

If you ever wondered about creating a second income through your arts or how to increase your income from art, this class is for you. This 2-day workshop will include: Artist Journey – a series of planning tools designed to help understand the elements of successful planning; Performing Artists – guidance on bookings, tours, and contracts and insurance; Pricing – formulas to obtain a profit margin; Marketing – tips on developing a portfolio, statement, social networking, websites; Artist Calendar – tips on designing and setting up a professional booth; Financing – a sampling of business plans and grant resources. This is a free program for visual, performing or cultural artists or people considering selling art. Lunch included.

Instructor: First People's Fund

August 6 & 7
8:30 AM – 4:30 PM

Location: CEC
Ages: 16+
FREE

Haudenosaunee Women – Their Roles, Responsibilities, and Influence

Women are at the center of family life, the pillars of a family, providing care for children and often the wider community. In this series of workshops explore the vital role women play in our society, from supporting each other from cradle to grave, to shaping our world. In this class community women of all races and religions will learn about contemporary life of women in a Haudenosaunee culture and discuss life for all women living in Haudenosaunee communities. Women are natural nurturers and empathic givers. It is vital for them to receive and be nourished as continual giving out ends in depletion, an increasingly common health problem. Women instinctually know how to nourish each other, and just being with each other is restorative.

August 12 & 13 - Pregnancy and Birth
August 14 & 15- Children Rearing and Parent
August 19 & 20- Life
August 21 & 22 - Death

Instructor: Sadie Buck

August 12 – 15, 19 - 22
5:00 PM – 7:00 PM

Location: CEC
Ages: 14+
General Fee: \$20
Tribal / Employee Fee: \$10

Budgeting

Learn practical tools and helpful tips to create a monthly budget, monitor spending, how to save, and plan for large expenses.

Instructor: Doug Younkle

August 13
5:00 PM - 6:00 PM

Location: CEC
Ages: 16+
FREE

FITNESS CAMP

**CALLING ALL
SUPERHEROES..**

Fitness camp will offer a wide variety
of fitness, sports and educational
sessions that are sure to build healthy
bodies and habits.



July 15-18, 2019

1:30 pm-4:30 pm

Oneida Family Fitness

Ages 6-8

Cost \$30.00

Limited to 12 youth

Registration Ends July 8th

AREAS OF FOCUS

**AGILITY
BALANCE
COORDINATION
STRENGTH
ENDURANCE
FLEXIBILITY**

2640 W. Point Road
Green Bay, WI 54304

(920)490-3730

www.oneidanation.org/fitness

familyfitness@oneidanation.org



wellness camp

at Oneida Family Fitness

Ages 12-14
Cost: \$30.00
Limited to 12 Youth

JUNE 24-27

1:30pm-4:30pm

YOU WILL LEARN:

- Nutrition information to maintain a healthy lifestyle
- Tai Chi Martial Arts
- Yoga Stretches

2640 W. Point Road
Green Bay, WI 54304
(920)490-3730
www.oneidanation.org/fitness
familyfitness@oneidanation.org




ONEIDA ADVENTURES Summer camps 2019

Paddle Camp

For Ages 9-13
Learn about canoeing and kayaking skills in the natural environment of the Norbert Hill Center Pond! Have fun with water games and learn about paddling safety. Paddle a local river on the last day with the extended hours and utilize your new paddling skills.
June 24-28 Location: Norbert Hill Center Pond
Offered: Mon-Fri from 1:00 pm to 4:00 pm
Cost: \$30.00
***Friday extended time: 10-4pm river tour**



Climbing Camp

For Ages 9-13
Explore climbing skills and techniques on the outdoor ropes course. Learn about climbing safety, responsibility, knots, and equipment used for climbing. Challenge yourself as an individual and as a part of a team!
July 8-12 Location: Oneida Adventures located at OFF
Offered: Mon-Fri from 1:00 pm to 4:00 pm
Cost: \$30.00



Adventure Camp

For Ages 9-13
Build a water raft with logs and rope and let's see if it floats! We will add to this adventure with compass scavenger hunts. Plan and participate in survival skills training and an adventure competition!
July 22-26 Location: Norbert Hill Center Pond
Offered: Mon-Fri from 1:00 pm to 4:00 pm
Cost: \$30.00



TO REGISTER, CONTACT
Lori Hill
920.490.3803
email: Adventure_dept@oneidanation.org
Web: oneida-nsn.gov/adventures

ONEIDA FAMILY FITNESS

PRESENTS

AUGUST
5-8
2019

SPORTS CONDITIONING CAMP

1:30 PM
TO
4:30 PM

AGES
6 - 8

YOUTH WILL LEARN

- TO SWIM FREESTYLE
- PROPER RUNNING FORM
- INDOOR BIKING FORM
- YOGA STRETCHES
- SPORT SPECIFIC TYPES OF TRAINING

COST: \$30.00 LIMITED TO 12 YOUTH

2640 W. Point Rd. Green Bay, WI (920) 490-3730

WWW.ONEIDANATION.ORG/FITNESS FAMILYFITNESS@ONEIDANATION.ORG

Arts / Community Summer

July 8 - 12 Destination Discovery

Do you like to program robots?
Do you wonder how things work?
Then come explore cool activities, like coding Ozobots, and designing and
creating structures out of various materials.
Explore how the arts can be integrated into all areas of learning.
Lunch provided.
Join in the fun as we dream, explore and create!

Activities Include:

Coding and Programming Ozobots
Designing a Tower
Building a Solar Oven to Cook a Treat
Lyric Writing
Storytelling

July 8 - 12, M - F, 10:30 am - 3:30 pm
Ages 10 - 12

Instructors: Jodie Prien, Wade Fernandez, Doug Younkle, Dustin Skenandore

Drop-off Location: CEC

General Fee: \$20 & Tribal/Employee Fee: \$10

Register Online:

<https://oneidacommunityeducationcenter.org>

July 15 - Music from Our

Discover the vibrant musical culture of the
performance that includes

July 15 - August 1, M
Ages

Activiti
Iroquois Socia
Language E
Pov
Nati
Oneid

Genera
Tribal/Emp

July 29 - August 1, M
Ages

Activiti
Exploration of Native
Oneid
Socia
Games

Instructors: Niko Daniels, Wade

Drop-off Locat

Genera
Tribal/Emp

Education Center Camps

June 24 - 28 Art Camp

Children will design art inspired by and learn about, Celestial Beings and the Milky Way. Kids will fabricate individual projects and a group project to be displayed in the community. On Friday afternoon, the camp will conclude with the unveiling of the public art piece.

Activities include:
Drawing & Painting
Fabric Painting and Sewing
Etching
Games
Food Art

June 24 - 28, M - F, 1:00 pm - 5:00 pm
Ages 9 - 14

Instructors: Weeya Smith, Sunny Webster, LeAnne Thompson

Drop off location: Arts Cottage

General Fee: \$20
Tribal / Employee Fee: \$10

August 1 Culture Camp

the Oneida Nation! Camp concludes with a
both MOC Camps, August 1.

TH, 8:00 am - 12:00 pm
Ages 9 - 16

Activities Include:
Traditional Music & Dance
Enhanced Songs
Pow-Wow
Native Flute
Native Hymns

General Fee: \$30
Employee Fee: \$15

TH, 1:00 pm - 4:30 pm
Ages 7 - 8

Activities Include:
Native Flute and Pow-Wow Music
Native Hymns
Traditional Dance
& Activities

Instructors: Leanne Fernandez, Harold Katchenago

Drop off location: Arts Cottage

General Fee: \$20
Employee Fee: \$10



Oneida Environmental Events May 2019

May 3, 9 A.M. - 12 P.M. 3rd Annual Garlic Mustard Pull

@ Norbert Hill Center

May 4, 9 A.M - 11 A.M ERB Oneida Earth Day Clean up

@ Onayote'a'ká Lake W172 Crook Rd

May 4, 11 A.M. - 1 P.M. Earth Day Tree Giveaway

@ Conservation Field Office on N8047County U * Please bring your Oneida ID for tree giveaway

May 11, 10 A.M.-3 P.M. Annual Seed & Plant Distribution

@ Tsyunhéhkwa Farm 139 Riverdale Dr/J *money orders available at Oneida Post Office

NO Cash sales \$10 check or money order for 9 seed and 6 plant varieties (24 plants+9 seeds)

May 18, 9 A.M. - 1 P.M. Youth & Elder Fishing Day

@ Osnúhsa' Kanya'tála 3707 Hillcrest Road * Please bring your Oneida ID for fishing day



Questions?
Contact
Environ-
mental
staff at :
869-1600

ONEIDA EARTH DAY CLEAN UP

Beat the rush!

Volunteer to help clean up
Oneida and order your trees
early!

TIME: 9:00 A.M.

LOCATION: Oneida Lake
W172 Crook Road

CONTACT INFO: LAURA MANTHE
920-496-5360

ONEIDA EARTH DAY & TREE GIVEAWAY SATURDAY, MAY 4TH 2019



TREE GIVEAWAY

Pick up your free trees to
plant in your yard!

TIME: 11:00 A.M.

LOCATION: Conservation
Field Office
N8047 County Road U

**CONTACT INFO: MELISSA
JOHNSON**
920-869-4582

PIANO LESSONS

with Beth Schulz

Lessons run (Wednesday)
June, 19 - July 24, 2019
6 half hour lessons

\$160 General Fee
\$150 Tribal Members/Employees

\$40 Native American Students
(Ages 6-17)

For more information contact:
Dustin Skenandore
dskenai2@oneidanation.org

Register online at
<https://oneidacommunityeducationcenter.org/>

**BUY. EAT. LIVE.
LOCAL.**

ONEIDA FARMER'S MARKET



ONEIDA BUSINESS PARK
N7332 WATER CIRCLE PLACE

THURSDAYS
12 TO 6PM
JUNE 20 - OCT. 3, 2019
BASH I - JULY 11
BASH - II AUGUST 15

WWW.FACEBOOK.COM/OFMWI
WWW.EXPLOREONEIDA.COM

ONEIDA
FALLING
LEAVES
4-H BRAT
BOOTH



Oneida Environmental, Health, Safety and Land



3rd Annual Garlic Mustard Pull

**Friday, May 3, 2019
9:00 a.m. to 12:00 p.m.
at Norbert Hill Woods**

**Meet at: Norbert Hill Center (Follow signs)
Light lunch will be provided after the event
Rain or Shine**

Please consider volunteering for the third annual Garlic Mustard Pull in Oneida! Garlic Mustard is an invasive plant that's taking over our woodlands. It crowds out our beautiful native wildflowers and endangers forests by preventing tree seedlings from growing. And, none of our North American insects or wildlife eat it. Help the Oneida Invasive Species Program remove this invader from the Norbert Hill Woods, and keep our natural areas healthy. Our goal is to remove 1,000 pounds of Garlic Mustard!

Event Notes: Please dress for the weather and the work! Where garlic mustard grows, we may also run into poison ivy and mosquitoes. Close-toed shoes, long pants and long-sleeved shirts are highly recommended. Bug repellent, garbage bags, and gloves will be provided.

To register, or for more information, contact:
Mike Arce (920)869-4552
marce@oneidation.org



A good mind. A good heart. A strong fire.



Jennifer M. Stevens

Oneida Potter, Researcher, & Instructor

21 Years Experience-17 Years Teaching!

Jennifer M. Stevens is student of nationally renowned Inquisian potters: Rose A. Kerstetter-Oneida (Wisconsin 5 Month Arts Board Apprenticeship Program 2002), Peter B. Jones-Seneca, Onondaga, & Oneida, and Richard Zane Smith (Two Week Training/With Scholarship and Oneida Nation Arts Program Grant 2018)



Oneida Pottery Classes: Work Sessions

Classes will entail 6 weeks of Oneida Pottery Work Sessions with Jennifer Stevens starting March 18, 2019.

Two Hour Sessions learning the basics of hand-building pottery on Monday's and Designing and Decorating on Saturdays.

Class Fees:

\$20 Per Class (Day of Choice)

\$40 2 Classes (A Monday & Saturday of Choice)

\$240 All 12 Classes (Every Session)

Pre-Register and Contact Instructor:

Jennifer M. Stevens

(920)664-6451

e-mail: jennifermstevens72@yahoo.com

Healing happens at ...

920-490-0627 ∞ WiseWomenGP.org ∞ [fb@WiseWomenGP](https://www.facebook.com/WiseWomenGP)

Wise Women Gathering Place



Programs and Services

Healthy Relationships & Decision-making

Discovery Dating: *It's not just about dating!*

Discover > personal values > skills to achieve dreams & goals
> options to consider in making life impacting decisions

- for adults > **Community Class**
- for parent & youth > **Growing Together**
- for youth > in Classrooms, Wise Youth, & Girls Group

Housing Assistance

- **New Hope Transitional Living Program**
- **Emergency stays** fleeing domestic violence or sexual assault.
- **Emergency relocation assistance**
- **Housing advocacy & referrals**

Advocacy & Support for Domestic Violence, Sexual Assault

- **Crisis response & emergency assistance**
- **Safety planning**
- **Advocacy:** individual, medical, youth, & legal advocacy (Not legal advice)
- **Support groups** for women, men, & girls
- **Native American culturally sensitive**

Healing & Holistic Wellness

- **Sexual Assault Healing group**
- **White Bison workshops:**
for adults > **Mending Broken Hearts**,
for youth > **Understanding the Purpose of Life**
for families > **Celebrating Families**
- **Shamanic healing services**
- **Reiki hands-on energy healing**
- **Holistic Wellness Series**

****All financial assistance based on funding availability. ****

Locations

Healing & Advocacy
2615 S. Packerland Dr, Suite B
Green Bay WI 54313



Community Outreach & Administration
1641 Commanche Ave, Suite H

ONEIDA BASKET GUILD

BEGINNER BASKET WEAVERS

DATE: 3RD SATURDAY, MAY 1-AUG 31

TIME: 10:00-2:00 P.M.

LOCATION: COMMUNITY EDUCATION CENTER

EXPERIENCED BASKET WEAVERS

DATE: 1ST & 3RD WEDNESDAY, MAY 1-AUG 31

TIME: 5:00-8:00 P.M.

LOCATION: COMMUNITY EDUCATION CENTER



ANNUAL FEE: \$30 (CASH OR CHECK)

VISIT US AT ONEIDANATIONARTS.ORG/ONEIDABASKETGUILD.HTML

20 Years From Now

Master Artist Series

Master artists in traditional Iroquois arts:
jewelry, baskets, and pottery are
coming to Oneida to inspire
and invigorate our local
artists and community.

April 24 – 28 Steve Chrisjohn, Oneida Silversmith
May 17 – 24 Richard Zane-Smith, Wyandot Potter
May 28 – 30 Dan Hill, Cayuga Silversmith
May 10 – 14 Pete Jones, Onondaga Potter
Sept 9 – 14 Brenda Hill, Tuscarora and Choctaw Potter

For more information, follow us on Facebook and CEC and ONAP websites.

Funding made possible from a grant from:





RESERVATIONS REQUIRED

for **Cora House Park**

and **Flying Leaf Lax Field**



- CORA HOUSE PARK LOCATED AT JONAS CIRCLE

To reserve contact Lori Hill at 920-490-3803 or lhil4@oneidanation.org

- FLYING LEAF LACROSSE FIELD AT SITE II

To reserve contact Jay Martinez at 920-869-6286 or jmartin2@oneidanation.org

Cora House Park is a community park. To ensure your group has use of the arbor, grill, & picnic tables for a specific date and time please make a reservation. Reservations are on a first come first serve basis. There is no cost associated with the reservation. A **RESERVED** sign will be posted on the arbor when there is a reservation. Please clean up after your event. Thank You.

Flying Leaf Lacrosse Field reservations are only for the lax field, no other amenities are included with this reserve.



GED/HSED PROGRAMS

Open career opportunities.

Improve your job satisfaction.

Gain personal satisfaction.

Create a foundation for higher learning.



Call (920) 496-5260 today and schedule an appointment for your
TABE (Test of Adult Basic Education) to get started!



JULY 22 - JULY 25

VISIT US ONLINE FOR:

- 2019 PLAY ANNOUNCEMENT -
- JUNE AUDITION INFORMATION -
- FESTIVAL LOCATIONS & TIMES -

[WWW.FACEBOOK.COM/WISCONSINNAPF/](https://www.facebook.com/wisconsinapf/)

ONEIDACOMMUNITYEDUCATIONCENTER.ORG/WISCONSIN-NATIVE-AMERICAN-PLAYWRIGHT-FESTIVAL/



The search is on...

Oneida Pageant 2019



**APPLICATION DUE
JUNE 10, 2019**

**FOR MORE
INFORMATION
CONTACT**

**RICH FIGUEROA
920-496-5644**

Oneida Community Library

201 Elm St. Oneida, WI

920-869-2210

Monday-Thursday 9am-6pm

Friday 11am-5pm

<https://www.facebook.com/Oneida.Community.Library/>



Green Earth Branch Library

W1273 Redtail Dr. De Pere, WI

920-833-7226

Monday-Thursday 9am-5pm

<https://www.facebook.com/greenearthbranchlibrary/>

Come check out our two great locations!

- Great resources to check out with your free library card
- Free Wi-Fi and high speed internet computers
- 24/7 Library access on Infosoup.org our online catalog where you can order materials to be sent to our location. Also access digital content with your favorite devices such as, e-books, audiobooks, magazines, and so much more.
- Weekly programming to inspire learning, and creativity (monthly calendars available)
- Job search and technology help available
- Fun and free special events for the whole family (monthly calendars available or find us on Facebook)
- After school homework help and reading incentives
- Outreach programs
- STEAM programming including 3D printers
- Summer Library Program for all ages to help prevent "Summer Slide"
- Early literacy and sensory programming
- Oneida Language and Oneida Cultural programming



A good mind. A good heart. A strong fire.

Summer Library Program

Sign ups start in May!!

A UNIVERSE
OF STORIES
UN UNIVERSO
DE HISTÓRIAS

20th Annual Youth & Elder Fishing Day

Osnúhsa? Kanya'tála (Finger Lake) Park
3707 Hillcrest Drive

Saturday, May 18

9:00 to 1:00

Rain or Shine!

Catch your limit of rainbow trout

We provide the bait—bring your own poles
(loaners available)

Prizes & Picnic Lunch

Please bring your Oneida I.D.

Questions? Contact Melis at 869-4566



A good mind. A good heart. A strong fire.

Drawing by Alyssa Noriega

Oneida Film Society
presents...

ONEIDA SMARTPHONE FILM FESTIVAL

Are you interested in creating a film from your phone? Then we are looking for YOU! Learn how to create short films using your smartphone, attend filmmaking workshops, meet filmmakers, and submit your film in Fall 2019. All Wisconsin residents welcome to participate. Prizes will be awarded during the festival.



WORKSHOP TOPICS INCLUDE:

HOW TO MAKE A SMARTPHONE FILM
STORYBOARDING
TECHNOLOGY SUPPORT

FILMMAKER APPEARANCES BY:

AKACIA MUSCAVITCH,
ALEX ZACARIAS,
MICHELLE DANFORTH-ANDERSON
and more!

Visit our website for details:
<https://oneidacommunityeducationcenter.org/oneida-smartphone-film-festival/>



Need a tutor?

Available for K-12 and various
college level assignments.

For more information visit
the Oneida Community Education Center at
<https://oneidacommunityeducationcenter.org/tutoring/>
(920)496-5260

ATTENTION

2019 Graduating Oneida
High School Seniors



The **Kalihwisaks** is once again preparing
to Honor **ALL 2019 graduating HIGH
SCHOOL Seniors!**

*The Special graduation section will be in the
June 20th 2019 issue in full color!*

*If you would like to be showcased in the
Special High School graduate section
of the **Kalihwisaks**, please submit by:*

Friday, May 10th 2019

The following information is needed:

- One color photo (*vertical preferred*)
- Black & white is acceptable
- Name of graduating student
- High School name student will be graduating from.

Please include a SASE (Self-Addressed Stamped
Envelope) so the photo can be mailed back to you.

Digital Photos Preferred

Attach photos to an email message and send to:
ykaquato@oneidanation.org

Any special congratulatory messages **WILL NOT** be
included in this section. You're welcome to purchase
a **Good News** message to be included in the June 20th
issue. *The cost is \$8.00 w/photo and 20 words or less.*

Mail photos to:

**c/o Kalihwisaks—Graduate Special
P.O. Box 365 • Oneida, WI 54155**

Walk-in Submissions will be accepted at:
2701 W. Mason St. (Big Bear Media)
until the posted submission deadline.

Submission DEADLINE:

Friday, May 10th, 2019

There is **no guarantee** that photos received
after the deadline will be included in the
Special Graduation Section. So, please adhere
to the posted deadline and submit the requested
information at your earliest convenience.

FORAGE WITH US



Discover new and interesting foraging facts this summer. Instructor Matthew Normansell is a British foraging and wild food expert. He was first inspired by his mother's family of herbalists and healers. He has worked and trained with numerous top foragers in Europe, including Roger Phillips, and is influenced by U.S. foragers Pascal Baudar and Samuel Thayer. Matthew is a published author and has appeared as a foraging expert on BBC TV and Wisconsin Public Television. He is a foraging leader with the Wisconsin Mycological Society for 2019 and is certified as a Expert Mushroom Identifier through the Midwest American Mycological Information (MAMI) Program.

For more information, visit <http://www.edenwildfood.com/>.

Safety in Foraging, May 2 - 5:30 PM **(Required for Foraging Workshop registration, FREE)**

FORAGING WORKSHOP

General Fee \$150 - Tribal/Employee \$75

Introduction to Foraging & Plant Identification, June 6 - 5:30 PM

Foraging for Edibles-Plants & Fruits, June 20 - 5:30 PM

Introduction to Fungi Identification, July 18 - 5:30 PM

Foraging for Edible Fungi, August 1 - 5:30 PM

Preservation & Collection: Edible Plants, Fungi, & Nuts, August 22 - 5:30 PM

For more information and to register visit:
www.oneidacommunityeducationcenter.org



Contacts

Arts Program, (920) 490-3830
<http://www.oneidanationarts.org>

Basket Guild
<http://www.oneidanationarts.org/oneidabasketguild.html>

Community Education Center, (920) 496-5260
<https://oneidacommunityeducationcenter.org>

Community Health Center, (920) 869-2711
<https://oneida-nsn.gov/resources/health/community-health-services/>

Community Library, (920) 869-2210
<https://oneida-nsn.gov/resources/library/>

Economic Support, (920) 490-3710
<https://oneida-nsn.gov/resources/economic-support/>

EHSD Eco Services
<https://oneida-nsn.gov/resources/environmental/about-environmental-health-safety/>

EHS Quality
<https://oneida-nsn.gov/resources/environmental/about-environmental-health-safety/>

Experiential & Adventures, (920) 490-3846
<https://oneida-nsn.gov/resources/experiential-adventures/>

Family Fitness, (920) 490-3730
<https://oneida-nsn.gov/resources/fitness-recreation/>

Farmer's Market, (920) 496-5649
<https://oneida-nsn.gov/resources/oneida-community-integrated-food-systems/farmers-market/>

Film Society
<https://oneidacommunityeducationcenter.org/oneidafilmsociety/>

Green Earth Branch Library, (920) 833-7226
<https://oneida-nsn.gov/resources/library/green-earth-branch-library/>

History Department
<https://oneida-nsn.gov/our-ways/our-culture/oneida-history-department/>

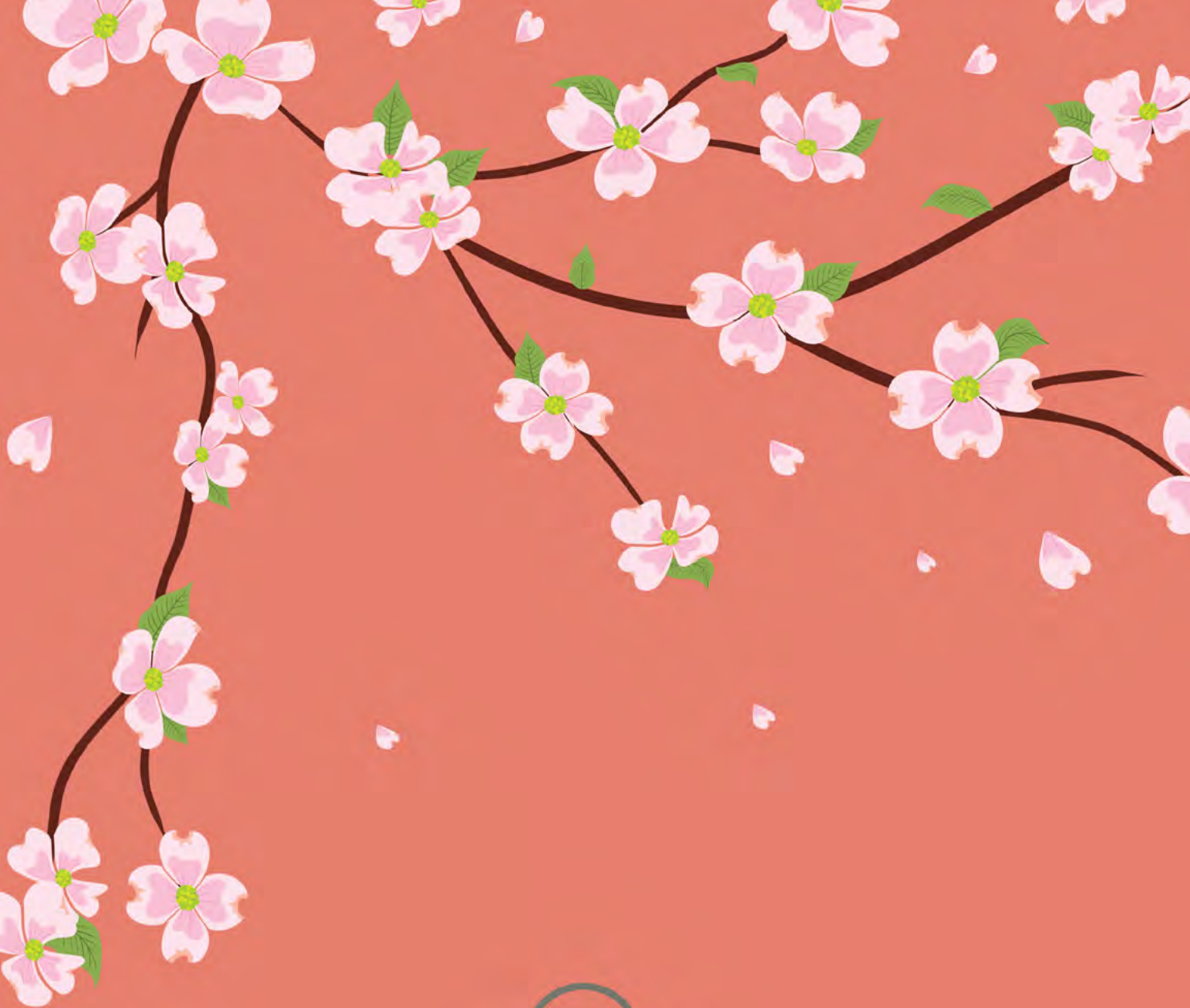
Kalihwisaks
<https://oneida-nsn.gov/resources/kalihwisaks/>

Matt Normansell
<http://www.edenwildfood.com/>

Recreation, (920) 869-1088
<https://oneida-nsn.gov/recreation>

Trust Enrollments, (920) 869-6200
<https://oneida-nsn.gov/resources/enrollments/>

Wise Women Gathering Place
<https://www.wisewomengp.org/>



ONEIDA

COMMUNITY CLASSES & EVENTS

2632 S. Packerland Drive
Green Bay, WI 54313

www.facebook.com/OneidaNationCEC
www.oneidacommunityeducationcenter.org

920.496.5260