

**ADDENDA  
ADDENDUM No. 1**

Date: January 15, 2019  
Project: OCHC Dental Renovation  
Project Number: 18-006  
Owner: Oneida Nation  
Architect: Oneida Engineering Department  
N7332 Water Circle Place  
Oneida, WI 54155  
To: Invited Bidders

This Addendum forms a part of the Contract Documents and modifies the Bidding Documents dated January 9, 2019, with amendments and additions noted below.

Acknowledge receipt of this Addendum in the space provided in the Bid Form. Failure to do so may disqualify the Bidder.

This Addendum entails modifications to the existing NO and N20 lines as described in SK-1 and SK-2 dated January 15, 2019. This Addendum consist of 3 pages including this sheet and the following attachments:

SK-1 & SK-2

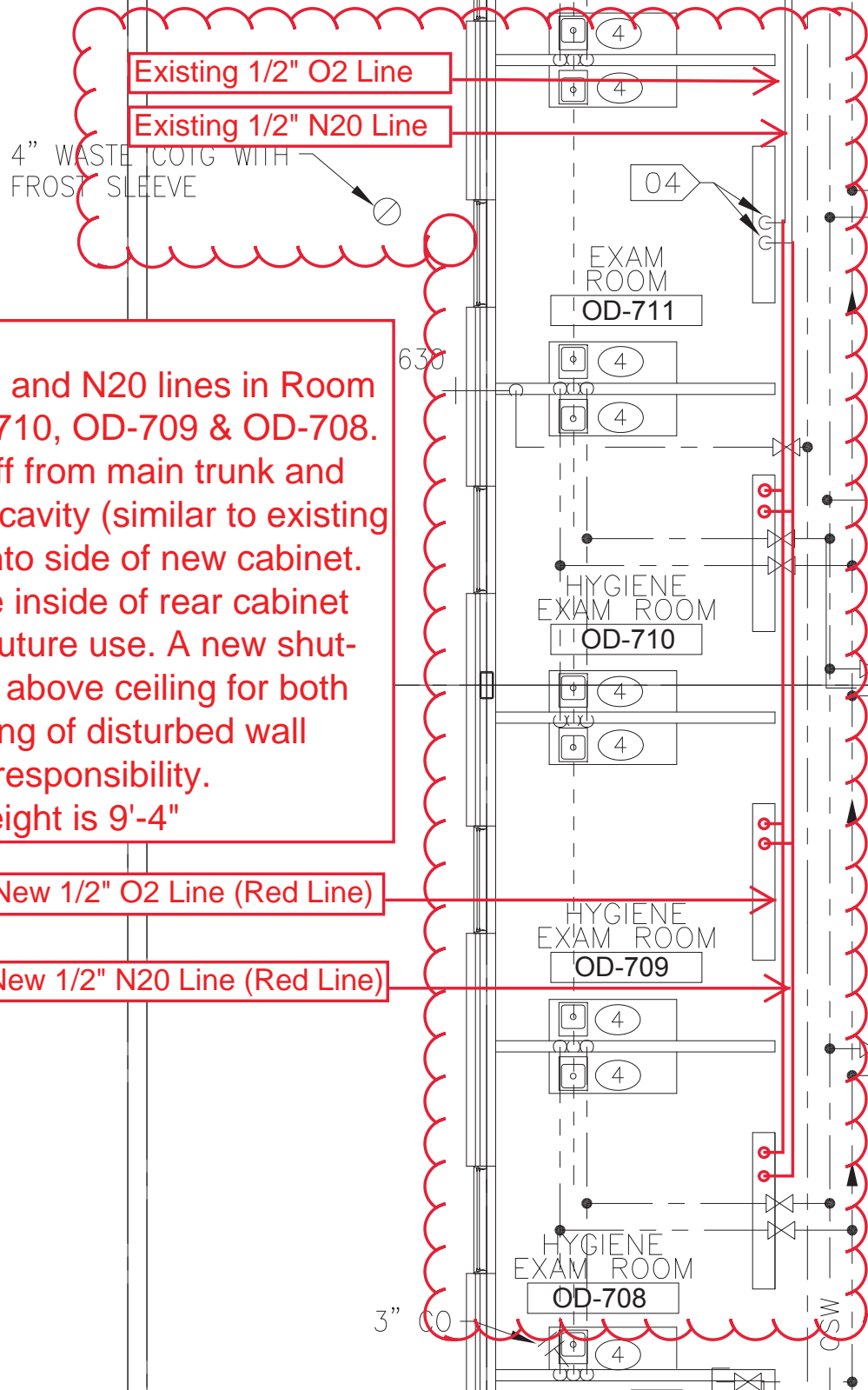
2 pages

**CHANGES TO PROJECT MANUAL:**

	Specification Section	Page No.	Paragraph No.	Description of Revision
1.	N/A			
2.				
3.				

**CHANGES TO DRAWINGS:**

	Drawing No.	Plan/Section/Detail	Description of Revision
1.	N/A		
2.			
3.			



**Addendum #1:**  
 Extend existing 1/2" O2 and N20 lines in Room OD-711 to Rooms OD-710, OD-709 & OD-708. Both lines will branch off from main trunk and run down into rear wall cavity (similar to existing condition) then elbow into side of new cabinet. Both lines will terminate inside of rear cabinet and will be capped for future use. A new shut-off valve will be located above ceiling for both lines. Patching & finishing of disturbed wall surface is Contractor's responsibility.  
**Note:** Typical ceiling height is 9'-4"

New 1/2" O2 Line (Red Line)  
 New 1/2" N20 Line (Red Line)

**SK-1**  
 1/15/19

Required for Rooms:  
OD-710, OD-709 & OD-708

Provide new shut-off  
valve for both lines  
above ceiling

New O2 and N2O  
lines

Terminate inside  
new rear cabinet  
and cap lines for  
future use