

DRUMS ACROSS ONEIDA

Oneida Elderly Service
2907 South Overland Rd.
Oneida, WI 54155
Ph: 920-869-2448
Fax: 920-869-1824



Senior Center-Meal Site
134 Riverdale Dr.
Oneida, WI 54155
Ph: 920-869-1551
Fax: 920-869-1526

Tsha>tekohs#lha> W<hn\$tae>

Great Snow Moon

February, 2009



The Words of the Peacemaker

This is to be the strong mind, O Chiefs: Carry no anger and hold not grudges.

Think not forever of yourselves.

O Chiefs, nor of your own generation.

Think of continuing generations of our own families

Think of our grandchildren and of those yet unborn whose faces are

Coming from beneath the ground...

Deganawidah

Submitted by: Dellora Cornelius, O.N.C.O.A. Chairwoman

| | Tuesday | Wednesday | Thursday | Friday |
|--|--|--|--|---|
| February 2009 ACTIVITIES | | | | *Activities due to change without notice. |
| 2 Scrabble Game Elderly Services 9:30 Pace Exercise Elderly Services 11:00 Serogy's Candy Store Green Bay 1:30 | 3 Crafts Elderly Services 9:30 – 11:30 | 4 Puzzles Elderly Services 9:30 Pace Exercise Elderly Services 11:00 Bingo Hwy H 1:30 | 5 St Vincent DePaul Green Bay 10:00 Cooking Elderly Services 1:00 | 6 Banks Shopping Lunch Out (on your own) 10:00 – 3:00 |
| 9 Yahtzee Game Elderly Services 9:30 Pace Exercise Elderly Services 11:00 Bingo Site II 1:00 | 10 Crafts Elderly Services 9:30 – 11:30 | 11 Oneida Language Elderly Services 9:30 Pace Exercise Elderly Services 11:00 Bingo Hwy H 1:30 | 12 Bingo Three Sisters Building 9:30 Valentine Party Senior Center 12:30 | 13 Banks Shopping Lunch Out (on your own) 10:00 – 3:00 |
| 16 Targot Toss Game Elderly Services 9:30 Pace Exercise Elderly Services 11:00 Movie Elderly Services 1:00 | 17 Crafts Elderly Services 9:30 – 11:30 | 18 Shuffle Board Elderly Services 9:30 Pace Exercise Elderly Services 11:00 Bingo Hwy H 1:30 | 19 Price Is Right Elderly Services 9:30 Dart Ball Hwy H 1:30 | 20 Banks Shopping Lunch Out (on your own) 10:00 – 3:00 |
| 23 UNO Game Elderly Services 9:30 Pace Exercise Elderly Services 11:00 Bingo Site II 1:00 | 24 Bingo Methodist Church 9:30 – 11:30 | 25 Oneida Language Elderly Services 9:30 Pace Exercise Elderly Services 11:00 Bingo Hwy H 1:30 | 26 Anna John Nursing Home Visit 10:00 Birthday Lunch 12:00 Bowling Ashw. Lanes 1:30 | 27 Banks Shopping Lunch Out (on your own) 10:00 – 3:00 |
| | | | *Please sign up for trips at Senior Center Main Office. *All trips leave from Senior Center. | <u>*Is this your Birthday month?</u> * You must <u>sign up</u> in the Birthday Book at Senior Center, Main Office, Must be <u>present</u> at the Birthday lunch to receive your gift card. |

* If you have any questions or concerns Please call Michelle at 869 -2448.

LIFE GONES ON



Advertising
Amanda
Archival
Artie
Becca
Breakthrough
Business
Classmate
Construction
Corky

Crowded
Disappointed
Drew
Dropout
Family
Fitting In
Foreman
Gentle
Gina
Glen Brook


Goodman
Grill
Growing Pains
Handicapped
Intelligent
Jerry
Libby
Loving
Maxie
Michael

Paige
Parents
Progress
Restaurant
Rona
Singer
Special Ed
Troubled
Tyler

There is something about a smile I know, it can never stay in one place. As sure as you smile, it is bound to go and appear on another face.
H. Spelman



MENU**FEBRUARY****2009****ONEIDA SENIOR CENTER, 134 RIVERDALE DRIVE, ONEIDA, WI., 54155 PHONE : 1-920-869-1551**

| Monday | Tuesday | Wednesday | Thursday | Friday |
|--|---|---|---|---|
| 2 Beef Stew Rice Biscuits Mixed Berries | 3 Potato Soup Fresh Bread Juice Jell-o W/Fruit | 4 Manicotti Salad Garlic Bread Pudding | 5 Chicken Breast Baby Red Potatoes Carrots W/W Bread Pears | 6 Swedish Meatballs Noodles Broccoli W/W Bread Pineapple, Apple & Orange Rings |
| 9 Chili Dogs Buns Beans Chips Juice Ice Cream | 10 Chicken Soup Fresh Bread Juice Bread Pudding | 11 Beef Pasty Mixed Vegetables Juice W/W Bread Peaches | 12 Sloppy Joes Pasta Salad Beans Buns Jell-O | 13 Pork Steak Wild Rice Mixed Vegetables W/W Bread Yogurt |
| 16 PRESIDENTS DAY Hamburger Patties Red Mashed Potatoes Green Beans Buns Sherbet | 17 Bean Soup Fresh Bread Juice Whipped Pie | 18 French Toast Sausage Mixed Berries Juice | 19 Chicken Stuffing Carrots W/W Bread Cookies | 20 Fish Fries Cole Slaw W/Apples Rye Bread Jell-o |
| 23 Hot Beef Sandwiches Potato Cubes Green Beans W/W Bread Applesauce | 24 Tomato Soup Grilled Cheese or Peanut Butter & Jelly Sandwiches Custard | 25 ASH WEDNESDAY Tuna Salad Croissants Juice Fresh Fruit | 26 BIRTHDAY DAY Pork Roast Mashed Potatoes Mixed Vegetable Cake | 27 Boiled Dinner Biscuits Juice Peaches |
| All meals are served with coffee, milk or tea. | Menu is subject to change. | BIRTH STONE: AMETHYST FLOWER: VIOLET | HOURS: 8:00A.M.-4:30P.M. Lunch Is Served Monday-Friday 12:00P.M.-1: 00P.M. |  |

Caregiver Support Group

**Oneida Elderly Services Complex
Conference Room
2907 South Overland Road
Oneida, WI, 54155**

**Friday, February 27, 2009
1:30 P. M. – 3:30 P. M.**

**Massage
Demonstration Hand Therapy**

**Music Therapy
Country...Classical...Ole Time Favorites**

**Literature
Dealing with stress as a Caregiver**

Powerful Tool Tips

**Refreshments Provided
Contact: Deborah J. Melchert, NAFCG
Oneida Elderly Services, at 920-869-2448 Ext. 6834**



LOVE

If you love something set it free if it comes back, it will always be yours...If it does not come back, it was never yours to begin with.

But if it just sits there in your living room, messes up your stuff, eats all your food, uses your telephone, takes your money and does not appear to realize that you had set it free.

You either married it or gave birth to it.

Submitted by: Pat Thompson, Elder



VALENTINE'S DAY PARTY
Thursday, February 12, 2009
At The Senior Center from 12:30 P.M. – 2:30 P.M.

Come have fun with your friends
Bingo, Lucky Lunch Winners
Best Lips (Male or Female)
Surprise Contest
More information contact - Joyce Johnson at 920-869-2448



A GREAT BIG THANK YOU TO ELDERS FOR VOLUNTEERING!!

In December, Oneida Recreation held a Breakfast with Santa Winter Wonderland. The event served 1063 community members. Entire families were invited to eat breakfast, and children ages 1-8 were able to have a picture taken with Santa and receive a gift. A Christmas Tree decorating contest, judged by the visitors, raised \$300.00 which was given to the Oneida Food Pantry.

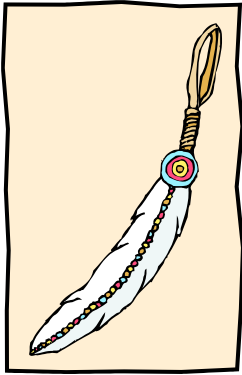
There were 25 Volunteers and 19 of them were Elders. These elders helped at the actual event and about 6 helped out in Activity/Crafts classes to help make all of the ornaments on the Elder Activity Tree. Some of the other areas our elders helped are: serving food, greeting people, manning of the trees for contest, handing out treats and gifts and helping in the picture taking room.

Our Elders Volunteer and help out with the Halloween and Easter Event as well. I would like to thank all of the Elders who volunteered for this Event. Without you, each event would not be as successful. You're the best!!!!

Michelle (Activity Coordinator) and all of Elderly Services.



Virginia Skenandore, for your wonderful donation. We are proud to be able to serve our elders and grateful to be honored with a gift for those services. Thank you from Oneida Elderly Services.



Alzheimer's & Native American Family Care-giver Support Group

Date: Wednesday, February 18, 2009
Time: 12:00p.m.
Where: Elderly Meal Site
134 Riverdale Dr
Oneida WI 54155

Come check out our very own Elderly Services staff. They will provide you with updates and answer any question regarding their fantastic support groups. Receive great information for both care-givers and elders. Any questions please call Angela Ortiz, Benefit Specialist at (920)869-2448 or (800)867-1551



Oneida Elderly Services Christmas Committee would like to take the opportunity to thank all the following departments and people for making our Elder Christmas Party a success and we wish you and yours a Merry Christmas and Hoyan!!! Rick Hill, OBC Chairman, Dellora Cornelius, ONCOA Chairwoman, Sandra Mahn, Assistant Area Manager, Ron Sommers, Gaming Administration Community Relations, Wes Smith, DPW Manager, Neil Cornelius, DPW, Sandra Gauthier, Purchasing Director, Grace Koehler, Printing Manager, Raymond & Joyce Johnson, NE Auto Parts, Curren Real Estate, Gitchi Gaming Inc, Webster Enterprises Inc, West DePere High School Students, Cherry Bounce Band, Radisson Hotel, Oneida Elderly Services Staff and all of Elderly Participants. If missed anyone please accept our apologies and thank you for contribution in making our Elderly Services Christmas Party a success and we hope to see you all next year...



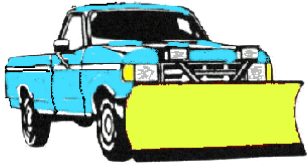
***2008 AMVETS COMMUNITY
SERVICE AWARDS BANQUET
DOXBEE'S SUPPER CLUB
JANUARY 22, 2009
PROGRAM AND DINNER BEGINNING AT 6 P.M.

SIGN UP AT THE MEAL SITE***



Oneida Elderly Services Christmas Committee would like to take the opportunity to thank all the following departments and people for making our Elder Christmas Party a success and we wish you and yours a Merry Christmas and Hoyaan!!! Rick Hill, OBC Chairman, Dellora Cornelius, ONCOA Chairwoman, Sandra Mahn, Assistant Area Manager, Ron Sommers, Gaming Administration Community Relations, Wes Smith, DPW Manager, Neil Cornelius, DPW, Sandra Gauthier, Purchasing Director, Grace Koehler, Printing Manager, Raymond & Joyce Johnson, NE Auto Parts, Curren Real Estate, Gitchi Gaming Inc, Webster Enterprises Inc, West DePere High School Students, Cherry Bounce Band, Radisson Hotel, Oneida Elderly Services Staff and all of Elderly Participants. If missed anyone please accept our apologies and thank you for contribution in making our Elderly Services Christmas Party a success and we hope to see you all next year...

SNOW PLOWING



by Oneida Elderly Services

In 1994 (ONCOA) Oneida Nation Commission on Aging, a nine (9) member elected advisory board to Elderly Services, took action to establish a priority of serving older & disabled adults. Older elders are identified as seventy (70) and over. This age group is identified nationwide as the most economically, socially and physically needy. Services are provided based on priority, staffing and funding availability.

Criteria for snowplowing: Oneida enrolled elders who own their own home.

Priority for snowplowing:

1. Elders on Lifeline
2. 70 years and older
3. 55 to 69 years who are disabled/handicapped and living alone
4. all other elders on the plow list

We update the snowplow list, on a regular basis, for health and other concerns. It is the elders' responsibility to keep Elderly Services up to date about health concerns.

Service area for snowplowing: Brown & Outagamie Counties within the Oneida Reservation Boundaries.

We have three (3) trucks, each with two (2) staff. Schedules are done by grids within the Reservation boundaries and each truck has a snow plow list and route based on their area. Each driver knows the boundaries of the reservation. If we have a truck breakdown - our back up is Department of Public Works (DPW). Currently we have 114 elders on the snowplow list.

Snow plowing starts with the first measurable snow fall of three (3) inches or more. Teams may begin at 4 am for times of large snowfall. There may be times when the snow plowing teams will clear a path for emergency vehicles and will return later to finish. Snow shoveling is completed while the plowing is being done.

For service requests and to update your health status information, please contact our Service Coordinator, Cheryl Ault at (920)869-2448. Family participation is greatly appreciated in our efforts to assist our elders in maintaining an independent, healthy, productive and quality lifestyle. Thank you for your patience, respect and confidence in striving to continuously improve delivery of all services to elders.

PURPOSE: To ensure the safety of our elders by providing snow and ice removal for emergency vehicle access.

DEFINITION: (ONCOA) Oneida Nation Commission on Aging: A nine (9) member elected advisory board to Elderly Services/Senior Center.

(ICF) Initial Contact Form: A form used to obtain client information and needs.

Service Coordinator: The initial point of contact for any service requested.

POLICY:

1. Oneida Nation Commission on Aging (ONCOA) advisory board to Elderly Services/Senior Center took action to establish a priority of serving older & disabled adults. Services are provided based on age priority, staffing and funding availability.

2. All snow and ice removal requests must be initiated through Oneida Elderly Services Initial Contact Form (ICF). The Service Coordinator will obtain the information needed and forward the Initial Contact Form (ICF) to the proper supervisor for processing.

Requirements include:

2.1 Must be enrolled Oneida tribal member.

2.2 Must own home.

2.3 Must live in Brown and/or Outagamie Counties within the Oneida Reservation Boundaries.

3. Elders between the ages of 55 and/or 69 and who *are employed* will be provided with a list of resources that are available *at cost* to the individual. (*The Director of Elderly Services may make an*

exception to this requirement on a case by case basis and shall document it).

4. Elders that have family members living with them who are capable of shoveling snow may be denied services. A list of resources that are available at cost to the individual will be provided. *(The Director of Elderly Services may make an exception to this requirement on a case by case basis and shall document it).*
5. Denial letters will be sent within *(3 to 5 working days)* to all requesters not eligible for snow & ice removal with a reason for the denial and a list of resources that are available at cost to the individual. A phone call will be made to the requester of the decision.
6. If an elder wishes to appeal a denial, a written letter must be submitted to the Assistant Director. The Assistant Director will bring the appeal request to next supervisor meeting for a decision. *(All decision of the Supervisors and Director of Elderly Services will be final and a letter with the decision will be sent to the elder).*
7. Snow plowing starts with the first measurable snow fall of *three (3) inches* or more. Snow plowing teams will make every attempt to be out plowing as early as 4:00am for Oneida elders according to the priorities:
 - 7.1 Elders on Lifeline & Dialysis.
 - 7.2 Elders 70 years and older.
 - 7.3 Elders aged 55 - 69 who are disabled/handicapped and living alone.

7.4 Elders aged 55 - 69 with serious health/safety issues.

8. If it snows consecutive days lifeline & dialysis clients will remain priority due to the high demand and severity of the illness.

8.1 There maybe times when the plowing teams will come and clear a path for emergency vehicles and will return the next day to finish.

If the plows don't return by the next day, please call the office at 869-2448.

8.2 Snow plowing and shoveling will consist of driveway and main entrance to home only.

9. Maintenance Supervisor will call clients regarding any delays in services and will give approximate time of arrival.

10. Donations are appreciated and accepted for continued support of Oneida Elderly Service Programs. A suggested donation of \$15.00 is appreciated and will be returned back to the program to supportive services for serving more elders.

11. It is the elder's responsibility to call Elderly Services for updates on current health and physical status that would change your eligibility status for assistance.



CHRISTMAS PARTY SURVEY 2008

| | YES | NO |
|--|-----|----|
| Was the time of the party good for you? | 451 | 6 |
| Was the meal to your liking? | 442 | 14 |
| Did you enjoy the music? | 451 | 8 |
| Did you find the location suitable? | 443 | |
| Did you find the staff to be friendly and helpful? | 439 | 5 |

COMMENTS:

- Limit time of the party
- Fantastic....It is nice to visit people you haven't seen in awhile
- Would like tea or juice on table
- Hot chocolate
- Tom and Jerry as a beverage
- Would like chicken/pork/steak/no turkey
- More gravy on food
- Would like fruit or fruit salad
- Fresh Vegetables
- Fried Bread
- Carry out
- Boiled eggs
- No spoons on table
- Cherry Bounce the Best
- Want Oneida Singers
- Sing a long
- Dinner Music/Big Band/Blues/Bluegrass/Motown/Western/Country
- Music to loud could not visit with people at table
- Want Bingo
- May be too long for old folk
- Happy no Bingo
- Valet Parking
- Staff/Hotel Staff excellent
- Had a great time
- Santa, giving out candy to room full of diabetics. Not cool
- Start at 11:00/12:00
- Waiter or waitress stop ask if we needed anything or how we are doing
- Staff not enough to help, but not terrible
- Staff always friendly/helpful
- Staff very nice and friendly Super...Thank you...People from 60-70 should not have to pay \$10
- Turkey wasn't done, sweet potatoes were good
- Don't like turkey. Stuffing and potatoes were good
- Want a later meal
- Music too loud....can't visit at tables
- Turkey too thick...not enough gravy
- Had problems getting the \$5.00 match play
- Give out \$ 10.00/\$20.00/ match play or gas card
- Hand out match plays at the door
- Meal served sooner
- Where's the beef?
- Some what chicken, like fried better

- Reserve Table sign need to be larger
 - Invite Charlie Hill
 - Stick on name tags
 - Move smokers out side
 - Calendar Small Print
 - Continue to book Cherry Bounce Thanks for a nice meal and music
 - Nice job. What a happy gathering
 - Great time...Pie was very good...Staff was very friendly
 - Very nice job...Thanks for putting this together...Keep it up!
 - That was a wonderful party...Very enjoyable...Thank you
 - I had the time of my life
 - Nice music, but too loud
 - For \$10, I would like a steak.
 - Too many sweets
 - Stuffing and potatoes were good
 - Food portions too large
 - Everything was wonderful Radisson did a nice job
 - Nice job. What a happy gathering
 - Nice to see the young people involved
 - Registration, Make signs
- large for all to see
 - You should let elders take our food home, more deserts. We won't get it all over our clothes. We should have different food & not same thing every year. Thank you
 - I had lots of fun
 - Can not wait until next year
 - Fantastic, it is nice to visit people you haven't seen in awhile
 - Super, thank you. People from 60-70 should not have to pay \$10
 - Thanks to all!! Had a wonderful time
 - Wonderful day
 - A very joyous time for friends and relatives
 - Would be nice to have children's chorus here. Make it more Christmassy
 - Enjoyable every year...Love the Cherry Bounce Band
 - More Christmas Carols
 - See you next year
 - S.E.O.T.S. Bus Wonderful! Kudos's!
 - Merry Christmas/Hoyan



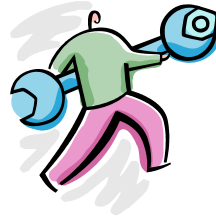
FROM THE DESK: Robert LaGest, Maintenance Supervisor

SUBJECT: Questions, concerns and work orders

TO: All Tribal Members and Elders

When the staff/team is at your residence and a situation happens or something is not quite right: write down the truck number or any complaints. You can call me at the Senior Center (920)869-1551, between the hours of 8:00 a.m. to 4:30 p.m.

Thank You,
Robert LaGest



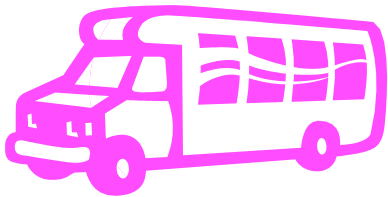
TRANSPORTATION NEWS!

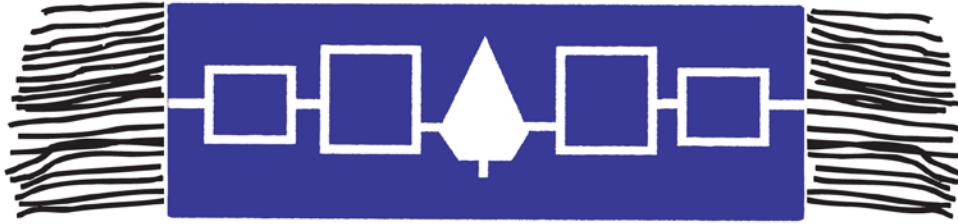
Beginning January 1, 2009 the two Medical Transport Aids that were assigned to the Oneida Community Health Center will be moving to Oneida Public Transit. This change brings us one step closer in the development of a comprehensive transportation system for the Oneida Tribe.

How does this change affect you?

1. One phone number to arrange both medical and non medical transportation.
2. Improved access to medical transportation services; greater service area, fewer eligibility restrictions, and longer hours of service.
3. New handicapped accessible vans have been enlisted specifically for medical transportation.
4. Continued low cost.
5. Limited long distance medical transportation.

Contact Oneida Public Transit at 833-1658 for all your transportation needs!





UP CLOSE AND PERSONAL WITH: Angela Ortiz

When you were a child, what did you think you would like to be?
Veterinarian or Doctor

Who or what has had the biggest influence in your Life?
My children, I had no fear before them and now I have plenty.

What do you consider to be your greatest accomplishment?
Raising two healthy and happy children with some help of course.

Is there something you have always wished you were great at doing?
Being slimmer in size.

What is the best advice anyone ever gave you? Don't worry about what other people think as long as you are doing what you think is right.

What advice would you give to someone who is about to retire?
Win the Lottery, opps! I mean Powerball.

What is your ideal vacation? Anywhere warm, on a beach, with lots of sun, and no time schedule for anything.

Favorite Meal: *Anything* my Abuela (grandmother) cooks.

Favorite Music: Depends on my mood but lots of R&B and Motown.

Favorite Book: I really wish I had time to read to have a favorite book.

Favorite Movie/Movies: Lion King and Lilo & Stitch

Favorite Hobby/Hobbies: Still working on getting one. I'll let you know when I do. 😊