

# DRUMS ACROSS ONEIDA

Oneida Elderly Service  
2907 South Overland Rd.  
Oneida, WI 54155  
Phone: 920-869-2448  
Fax: 920-869-1824



Senior Center-Meal Site  
134 Riverdale Dr.  
Oneida, WI 54155  
Phone: 920-869-1551  
Fax: 920-869-1526

Yeyathókwas Wahní'tale?

Harvest Moon

September 2011

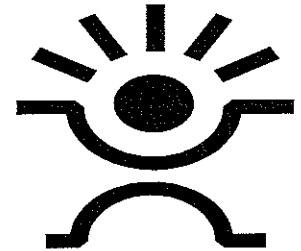


DRUMS CONTACT  
Linda F. Douglas

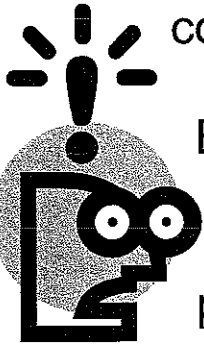
Telephone: 920-869-2448 or 1-800-867-1551  
Email [ldouglas@oneidanation.org](mailto:ldouglas@oneidanation.org)

## Only in America

Drugstores make sick people walk to the back of the store for prescriptions...healthy people buy cigarettes in the front



People order double cheeseburgers, large fries and a diet coke

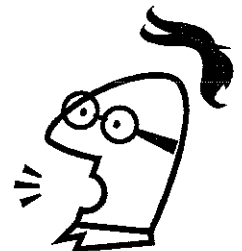


Banks leave vault doors open...chain the pens

Buy hot dogs in packages of ten...buns in packages of eight

Drive-up ATM machines with braille lettering

Why isn't there a mouse flavored cat food?



Enthusiasm is excitement with inspiration, motivation and  
a pinch of creativity

--Bo Bennett

d	o	c	u	m	e	n	t	a	r	y	n	g	p	y	s	z	y	c	t
z	g	d	i	k	d	u	c	h	e	s	s	n	r	x	n	w	c	j	g
m	a	n	a	g	e	r	x	s	t	m	m	i	o	o	o	s	a	n	n
r	q	g	d	c	r	e	w	s	r	c	e	p	d	l	s	i	r	c	i
e	d	i	u	g	r	u	o	t	e	k	l	p	u	c	n	n	i	i	n
r	p	a	t	h	w	a	y	s	n	a	o	a	c	n	h	i	p	r	n
m	o	n	o	l	o	g	u	e	t	r	d	n	t	a	o	s	s	c	u
i	n	t	r	i	g	u	e	v	q	v	r	s	i	i	j	t	n	l	t
q	g	n	i	t	o	o	h	s	s	i	a	a	o	l	r	e	o	e	s
p	a	m	d	a	o	r	z	e	p	k	m	l	n	a	a	r	c	s	b
s	s	l	n	t	e	z	r	x	e	a	a	l	c	t	m	z	u	a	h
m	z	k	u	v	a	i	y	x	e	q	y	s	h	i	o	o	f	c	o
a	m	h	r	f	t	c	p	w	j	j	r	t	t	g	u	f	a	v	t
r	n	n	s	a	t	e	t	o	n	a	m	a	h	l	l	t	e	z	e
r	y	u	s	p	r	h	n	r	i	a	w	r	f	i	a	n	o	e	l
m	e	r	r	i	f	a	g	l	e	j	a	r	n	c	i	a	l	o	d
w	y	g	m	s	t	e	u	i	q	s	e	g	o	c	m	r	p	y	l
a	c	e	n	h	e	c	u	n	l	p	s	m	e	g	a	s	p	o	z
f	n	n	a	i	e	s	a	d	u	e	b	x	o	h	m	t	e	t	g
t	v	n	e	p	l	l	g	s	w	s	d	d	c	d	y	m	e	n	e

Hotel

Actress

Dogma

Linger

Satire

All Star

Duchess

Manager

Shooting

Baffling

Enemy

Melodrama

Sinister

Catacombs

Experiment

Monologue

Snapping

Charlee

Feud

Nurse

Stunning

Circle

Hotel

Omar Johnson

Superfluous

Conspiracy

Intrigue

Pathways

Tour Guide

Crew

Italian

Peculiar

Trent

Delightful

Jonathan

Production

Venice

Documentary

Karvika

Road Map

# Volunteers Wanted

## Oneida Elder Services

- Volunteer must be 55 years or older
- Various services volunteer(s) will work in are:
  - Minor home repairs moving, grass cutting, snow removal
  - In home chore general house keeping and organizing
  - Spending time with the Elder reading or visiting
  - Activities with elders games, cards or cooking
  - Meal Site assistance in the kitchen, customer check in, delivering Meals on Wheels (MOW=meals delivered to homebound elders)
  - Administrative work filing, inventory, computer projects and general office work
- Volunteers may assist in Elder Services special events as requested
- Volunteers may assist in recruitment of new volunteers and promoting the volunteer program
- Volunteers are not approved to handle any money transactions

Supervisor receiving request will:

- Meet with volunteer to discuss if the duties and responsibilities are the best fit for both the supervisor and the volunteer. If supervisor and volunteer agree on responsibilities a Background Information Disclosure (BID) form will be completed and sent for approval.
- Supervisor will complete, with the volunteer, the remaining Volunteer Program forms and the applicable forms from an Elder Services new employee packet.

If you would like to volunteer please contact:

Cheryl Ault

E mail [cault2@oneidanation.org](mailto:cault2@oneidanation.org)

(920) 869-2448 or 800-867-1551

Cheryl will complete an ICF and forward to the appropriate Supervisor, taking into account any special skills and interests the volunteer might have.



# MENU

SEPTEMBER

2011

ONEIDA SENIOR CENTER, 134 RIVERDALE DRIVE, ONEIDA, WL, 54155

PHONE : 1-920-869-1551

Monday	Tuesday	Wednesday	Thursday	Friday
<p>5</p> <p><b>CLOSED LABOR DAY</b></p>	<p>6 Chef Salad Ham, Turkey, Cottage Cheese Dinner Rolls Sherbet</p>		<p>1 Lasagna Salad Garlic Bread Juice Ice Cream Bars</p>	<p>2 <b>Breakfast</b> Poached Eggs Sausage Toast Juice Berries</p>
<p>12 Hamburger Patties Wild Rice Broccoli Buns</p>	<p>13 Pork Steak Scalloped Potatoes Carrots W/W Bread</p>	<p>14 Polish Sausage Red Potatoes Green Beans W/W Bread</p>	<p>15 Beef Roast Potatoes Brussels Sprouts W/W Bread</p>	<p>16 Tomato Soup Egg Salad and Ground Bologna Sandwiches</p>
<p>Jell-o</p>	<p>Peaches</p>	<p>Melons</p>	<p>Mandarin Oranges</p>	<p>Whip &amp; Chill</p>
<p>19 Hot Dogs Macaroni &amp; Cheese Buns Juice</p>	<p>20 Bean Soup Fresh Bread Juice Fresh Vegetables</p>	<p>21 Tater Tot Casserole Green Beans Juice W/W Bread</p>	<p>22 Chicken Potatoes Mixed Vegetables W/W Bread</p>	<p>23 <b>Breakfast Menu For Lunch</b> French Toast Eggs Sausage Juice Berries</p>
<p>Fresh Fruit</p>	<p>Peaches</p>	<p>Yogurt</p>	<p>Fresh Fruit</p>	<p>30 Fish Cole Slaw French Fries Rye Bread Juice Jell-o</p>
<p>26 Sloppy Joes Macaroni Salad Beans Buns Fresh Vegetables Ice Cream</p>	<p>27 BBQ Ribs Scalloped Potatoes Peas W/W Bread Cookies</p>	<p>28 Meat Loaf Rice Pilaf Mixed Vegetables W/W Bread Yogurt</p>	<p>29 <b>BIRTHDAY DAY</b> Pork Roast Mashed Potatoes &amp; Gravy Cranberries Mixed Vegetables W/W Bread Cake</p>	
<p>All meals are served with coffee, milk, tea or water</p>	<p>Menu is subject to change.</p>	<p><b>BIRTH STONE:</b> Sapphire <b>FLOWER:</b> Aster</p>		<p><b>HOURS:</b> 8:00A.M.-4:30P.M. Lunch Is Served Monday-Friday 12:00P.M.-1: 00P.M.</p>

*Powerful Tools for Caregivers (PTC) Program*  
*Developed by Legacy Caregiver Services*

Topics we will cover include:

- Taking care of YOU
- Identifying and Reducing Personal Stress
- Communicating Feelings, Needs and Concerns
- Communicating in Challenging Situations
- Learning from Emotions
- Mastering Caregiving Decisions

The program is a 2 ½ - hour training session over a 6-week course designed to:  
Teach you, the Caregiver, how to care for yourself while caring for another.

Date: Wednesday, September 21, 2011

Time: 9:30 AM. – 12:00 P.M.

Place: Oneida Elder Services  
2907 South Overland Road  
Oneida, WI 54155

Lay Leaders: Debi Melchert and Sandra Summers

SIGN UP FOR THE CLASS CALL 920-869-2448

CONTACTS: DEBI AT EXT. 6834 OR SANDRA AT EXT. 6835

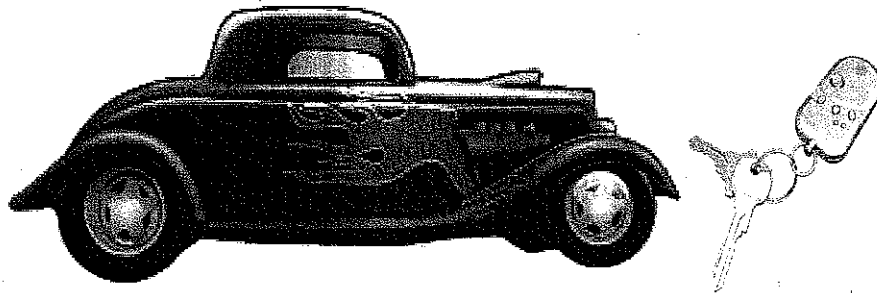
# SEPTEMBER 2011 ACTIVITIES

Monday	Tuesday	Wednesday	Thursday	Friday
*Activities due to change without notice.				
*Please sign up for trips at Senior Center Main Office.				
*All trips leave from Senior Center.				
5 OFFICE CLOSED OBSERVANCE OF LABOR DAY	6 No Activities Due to Staff In-service	7 SENIOR DAY AT THE NEW ZOO 10:00	8 Salvation Army Green Bay 10:00 ONCOA BINGO Senior Center 1:00	9 Banks, Shopping, Lunch Out (on your own) 10:00 – 3:00
12 Rummikub Game Elder Services 9:30 Pace Exercise Elder Services 11:00 Bingo Site II 1:00	13 Crafts Elder Services 9:30 - 11:30	14 Oneida Language Elder Services 9:30 Pace Exercise Elder Services 11:00 Bingo Hwy H 1:30	15 APPLE PICKING Oneida Orchard 10:00 Wii Bowling Hwy H 1:00	16 Banks, Shopping, Lunch Out (on your own) 10:00 – 3:00
19 Wii Bowling Elder Services 9:30 Pace Exercise Elder Services 11:00 Movie Elder Services 1:00	20 Crafts Elder Services 9:30 - 11:30	21 Scruples Game Elder Services 9:30 Pace Exercise Elder Services 11:00 Bingo Hwy H 1:30	22 Cooking Elder Services 9:30 Bowling Ashw. Lanes 1:30	23 Banks, Shopping, Lunch Out (on your own) 10:00 – 3:00
26 Qwirkle Game Elder Services 9:30 Pace Exercise Elder Services 11:00 Bingo Site II 1:00	27 Crafts Elder Services 9:30 - 11:30	28 Oneida Language Elder Services 9:30 Pace Exercise Elder Services 11:00 Bingo Hwy H 1:30	29 Price is Right Game Elder Services 9:30 Birthday Lunch Senior Center 12:00 Wii Bowling Hwy H 1:00	30 Banks, Shopping, Lunch Out (on your own) 10:00 – 3:00

*\*If you have any questions Please call Michelle at 869 – 2448\*\**

# ONEIDA ELDER SERVICES

## "AARP Driver's Safety Program"



\*\*\*\*\* WINTER IS COMING!!! \*\*\*\*\*

It's time to polish up those driving skills!

Elder Services has lined up the "AARP Drivers Safety Program"

DATE: October 13, 2011

TIME: 9:00 am - 1:00 noon (4 hours total class length)

PLACE: Elder Services 2907 S. Overland Rd. (POD A)

Please sign-up at the Senior Center

Elder Services will pay for the first 10 Elders who sign-up

Some of the highlights will be:

- Information on aggressive drivers
- Anti-lock brakes
- Car phones
- Defensive driving techniques
- New traffic laws
- Get an Insurance Discount (consult your insurance agent)
- How to adjust your driving to age-related changes in vision,
- hearing, and reaction time

Deadline to sign-up is October 6, 2011 at the Senior Center

\*\*\*No testing\*\*\*

If you have any questions please feel free to contact:

Joyce Ann Hoes

Transportation Supervisor

869-2448 ext. 6844



# Oneida Elder Services ANNUAL



**Supports: Roberta Kinzhuma Scholarship**

**Date: September 2, 2011**

**Time: 10 am to 3 pm**

**Location:**

**Senior Center / Meal Site**

(134 Riverdale Dr, across the road from Tsyuhekwa farm)

**Rummage, Car Wash,  
Lunch, 50/50 Raffle**

(Meal site will serve breakfast only)

For more information call  
Robert LaGest (920) 869-2448

# RUMMAGE SALE TIDBITS:

- Elder Service Mealsite will serve breakfast instead of lunch this day so that all can participate in the sale.
- Rummage sale time is a great time for spring cleaning. Have you done yours?
- If you would like to donate, please call us at (920) 869-2448 for drop off location.
- We would greatly appreciate if you could store your items until the week of rummage sale.
- Thank you for your continued support to our  
*Roberta Kinzhuma Scholarship*



# Oneida Elder Services

## Presentation: EMERGENCY PREPAREDNESS

September 13, 2011

11:45 am – 12:15 pm

Meal Site : 134 Riverdale Dr., Oneida

Guest Speakers:

Marty Antone & Kaylynn Gresham  
Oneida Emergency Management Team

### September is National Preparedness Month

Take action now to make sure your family, neighborhood and community are ready for emergencies and disasters of all types:

- ➡ Put together an emergency supply kit
- ➡ Make a family emergency plan
- ➡ Be prepared to help your neighbor
- ➡ Work as a team to keep everyone safe

To learn more about how you can prepare for emergencies visit [ready.gov](http://ready.gov) or call 1-800-BE-READY, TTY 1-800-462-7585



**A Time to Remember.**  
**A Time to Prepare.**

Oneida Elder Services  
Joyce Ann Hoes  
(920)869-2448 ext 6844

Oneida Emergency Management  
Marty Antone/Kaylynn Gresham  
(920)869-6651/6650

NATIONAL PREPAREDNESS MONTH  
September 2011 | [ready.gov](http://ready.gov)



# What is Alzheimer's disease?

Alzheimer's is a disease of the brain that causes a steady decline in memory. This results in dementia – loss of intellectual functions (thinking, remembering, and reasoning) severe enough to interfere with everyday life. When German physician Alois Alzheimer first described the disease in 1907, it was considered rare. Today, Alzheimer's disease is the most common cause of dementia, affecting 10 percent of people 65 years old, and nearly 50 percent of those age 85 or older. An estimated 5.4 million people are living with Alzheimer's, a disease linked to aging: every 69 seconds, someone develops it. Alzheimer's is the sixth-leading cause of death in the USA, and the only one among the top 10 that has no prevention or cure, says William Thies, chief medical and scientific officer of the Alzheimer's Association. Alzheimer's disease usually begins gradually, causing a person to forget recent events and to have difficulty performing familiar tasks. How rapidly the disease advances varies from person to person, causing confusion, personality and behavior changes, and impaired judgment. Communication becomes difficult as the person with Alzheimer's struggles to find words, finish thoughts, or follow directions. Eventually, a person with Alzheimer's become totally unable to care for themselves. Come join me at the Support Group to learn more about the disease of Alzheimer's.

Alzheimer's Support Group

Date: Wednesday September 28, 2011

Time: 1:30-2:30 P.M.

Place: Oneida Elder Services Complex

2907 S. Overland Rd. Oneida, WI 54155

Submitted by: Debi J. Melchert, NAF CG -Native American Family Caregiver/Coordinator

Oneida Elder Services

Phone: 920-869-2448

## PER-CAPITA TIME

When Per Capita payments are made some will have to spend the money within the month in order to maintain certain public benefits to keep below the asset limits.

Elder Services' budget does not allow for the purchase of household appliances. The Loan Closet may have some for emergency use only, but that is not a guarantee. Please take a moment to inventory your appliances and or furniture. Take the time now to take stock of your household needs and try to determine beforehand what you might need to purchase. Remember the lifetime expectancy of some items are 10-15 years, perhaps now is the time for replacement.

Some suggested items you may need to purchase for your home:

### Appliances:

#### Energy Efficient Appliances

Water Heater

Stove

Furnace

Refrigerator

Freezer upright or chest

Washer and Dryer

Air Conditioner/Central Air

Water Softener Unit

Humidifier /Dehumidifiers

Sump Pump

Toilet—High

### Home Improvements:

Carpet

Windows

Weatherization

Security System

### Household Items:

Mattress and Box Spring

Dressers

Furniture

### Maintenance:

Lawn Mower or riding mower

Snow Blower

### Other Suggestions:

Auto Repairs

Auto Purchase

Clothing—Seasonal

Blankets—Sheets—Pillows

Kitchen Ware

Storage Bins

Light Fixtures

Large print telephones

Coats

Boots—slippers

Special Shoes

Medical Aids

If you have any questions regarding the effect of your Per Capita on your public benefits contact

Angela Ortiz ~ Elder Benefit Specialist  
(920) 869-2448 or (800) 867-1551

## **The Effect of Per Capita Distributions On Public Benefits**

As many of you are aware the Per Capita for 2011 will be distributed is a short time from now. This payment will generally affect only needs based benefits. Benefits not based on need should not be affected. The affect will be the same as in the past, needs based benefits will be cut off for a general time period (which will be sent in written notice to the recipient) in hopes to spend down cash/checking/savings account to the \$2,000 limit for an individual and \$3,000 for a couple. As in most needs based programs, the program recipient (tribal member receiving the Per Capita) has an obligation to report all changes in income, such as a Per Capita, to their case worker.

### **Programs that should not be affected by a Per Capita distribution:**

- ❖ Social Security Retirement Benefits
- ❖ Social Security Survivors Benefits
- ❖ Social Security Disability Benefits
- ❖ Medicare (Part A, Part B, and Part D)
- ❖ Service-connected Veteran's benefits

These benefits are usually only affected by income earned from wages and not unearned income.

### **Needs-based programs that may be affected by a Per Capita distribution:**

- ❖ Supplemental Security Income (SSI) based on age
- ❖ Supplemental Security Income (SSI) based on disability
- ❖ Need- based Veteran's benefits
- ❖ QMB, SLMB, and SLMB +(Medicare Buy-In Programs)
- ❖ Food Stamps
- ❖ Medical Assistance
- ❖ Commodities
- ❖ W-2, TANF
- ❖ Section 8 / Housing Assistance Voucher
- ❖ Title V

To those who do receive Supplemental Security Income (SSI) based on age or disability: Spend your money wisely. Only spending your money on necessary items to sustain your household and living conditions will be your way back to getting benefits once your money comes to an allowable amount. **Please save all the receipts of your purchases.**  
**This is very important.**

***Any questions contact  
Angela Ortiz  
Elder Benefit Specialist  
(800) 867-1551 or (920) 869-2448***

# We Love our Elders

Yethino·lúkhwa? Yukwakwaná·ta?

Oneida Elder Services

Sponsoring an Elder Abuse Educational Event

Date: **September 7, 2011**

Where: The Radisson Hotel

Iroquois Room South

Time: 8:30 A.M. to 4:30 P.M.

**LUNCH INCLUDED!!**

We will be hosting an all-day event and will feature speakers from the different areas of abuse, the signs to look for if you suspect abuse of an elder, and how to protect yourself from physical and emotional abuse. Familiarization with the investigative process of abuse will be an additional topic and will help to alleviate some of the fear that elder victims may have about an investigation.

This event is intended for elders, caregivers, and anyone else who wishes to learn more about elder abuse.

We will have speakers

Oneida Police Department Detective, Ronald King Jr.

Elder Abuse Coordinator, Brown County Sexual Assault Center, Bonnie Coonen

A speaker for Domestic Violence

A speaker for Financial Exploitation

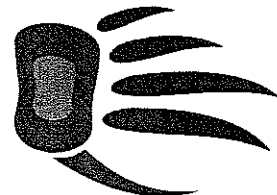
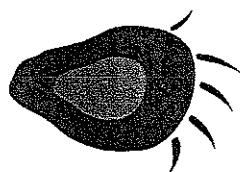
This event is open to the first 100 people to register.

Please contact

Dan Borgstrom, Elder Outreach Assistant 920-869-2448

Joyce Johnson, Elder Abuse Prevention Coordinator 920-869-2448

We hope to see you there!!



## Caregiver Support Group

Presenter: Matinee for Caregiver

Time: 1:30 P.M.-3:30 P.M.

Date: Friday September 16, 2011

Place: Oneida Elder Services Complex


2907 South Overland Road

Oneida, WI 54155

Contact: Debi J. Melchert, NAFCG -Native American Family Caregiver/Coordinator

Oneida Elder Services

Phone: (920) 869-2448



## Chronic Disease Self-Management

Presenter: Tina Pospychala ~ Assistant Director ~ Oneida Elder Services

Time: Noon (30 min. presentation)

Date: Wednesday October 26, 2011

Place: Oneida Senior Center / Meal Site


134 Riverdale Drive

Oneida, WI 54155

Contact: Debi J. Melchert, NAFCG Native American Family Caregiver/Coordinator

Oneida Elder Services

Phone: (920) 869-2448



## Alzheimer's Support Group

Date: Wednesday October 26, 2011

Time: 1:30 – 2:30

Place: Oneida Elder Services Complex

2907 South Overland Road

Oneida, WI 54155

Contact: Debi J. Melchert, NAFCG -Native American Family Caregiver/Coordinator

Oneida Elder Services

Phone: (920) 869-2448



# GLNAEA

## Great Lakes Native American Elders Association

Sponsored by Oneida

October 13 & 14

**Radisson Hotel & Conference Center Green Bay**

2040 Airport Drive, Green Bay Wisconsin 54313



### Agenda:

Thursday, October 13, 2011

- Elder Abuse Task Force Meeting 6pm

Friday, October 14, 2011

- Continental Breakfast October 14, 2011, 9:00 am
- Reports (Standing Reports and Treasurer's Report)
- Chair Woman's Report/Birthday Announcements
- Guest Speaker
- Raffles, Door prizes, Vendors and Networking

Any questions please call Oneida Senior Center at (920)869-1551. Thank you. Please remember to bring you tribal enrollment card.

Elder Financial Abuse/Exploitation  
By Joyce A. Johnson  
Elder Abuse Prevention Supervisor  
Oneida Elder Services

Elder Abuse is one subject that many of us do not like to talk about or even think about. Unfortunately it is one of those sad truths that occur daily in our society and tragically even in our Indian Communities.

One form of elder abuse is Financial Exploitation. This means to obtain an elder's money or property by deceiving or enticing the individual, or by forcing, compelling, or coercing the individual to give, sell at less than fair market value, or in other ways convey money or property against his or her will without his or her informed consent.

In a few weeks many of our Oneida Tribal members will be receiving Per Capita payments. These Per Capita payments help our membership to purchase many necessities that we may have to go without. Many of our elders will use this extra income to buy furniture, clothing, and other items that their limited incomes may not allow at any other time during the year.

Our Indian culture and traditions have taught us the importance of respecting and caring for our elders. During the few weeks following this monetary disbursement many of us who receive this Per Capita will use the funds to pay bills and purchase some other nice things. For those few who might use this as an opportunity to "borrow" from your elder family members or friends, please respect their right to use their funds for their own needs. All elders have the right to stand firm and refuse to be enticed/coerced into lending funds or property at any time.

If you feel an elder community member is being financially exploited please contact the Oneida Elder Abuse Prevention Supervisor at (920)869-2448 x 6833

**ONEIDA ELDER SERVICES DEPARTMENT  
MISSION STATEMENT**

The Elder Services Program of the Oneida Nation of Wisconsin  
To assist our elders to maintain an independent, healthy, productive and  
quality lifestyle through love, caring and respect by the services we provide.

Cheryl Ault  
Service Coordinator  
920-869-2448 or 800-867-1551

**ONEIDA ELDER SERVICES  
ENROLLMENT FORM**

**DATE:** \_\_\_\_/\_\_\_\_/\_\_\_\_

NOTE: The State & Federal Governments have requested that we collect the following information on individuals who receive our services. The information may be used to justify continued funding of our programs.

Name \_\_\_\_\_ Phone Number (\_\_\_\_) \_\_\_\_\_

Address \_\_\_\_\_ Social Security Number Last four digits \_\_\_\_/\_\_\_\_

City \_\_\_\_\_ State \_\_\_\_\_ Zip Code \_\_\_\_\_ County \_\_\_\_\_ DOB \_\_\_\_/\_\_\_\_/\_\_\_\_

**OUR PROGRAM POLICY FOR SERVICES** is as follows: 1) Elder aged **70 years** and older. 2) Elders aged **55-69 years** of age that are disabled/handicapped, living alone. 3) Elders aged **55-69 years** of age, with **health/safety issues**. The elders that are listed are our **priority**.

**Please check the appropriate responses:**

**Martial Status:** \_\_\_\_ Married \_\_\_\_ Single \_\_\_\_ Widowed \_\_\_\_ Divorced

**Maiden Name:** \_\_\_\_\_

**Veteran:** \_\_\_\_ Yes \_\_\_\_ No

**Living Arrangement:** \_\_\_\_ Live Alone \_\_\_\_ Lives with Spouse \_\_\_\_ *Lives with others\** \_\_\_\_ *How many*

**Do you:** \_\_\_\_ Rent \_\_\_\_ Own

**Race:** \_\_\_\_ Native American \_\_\_\_ Caucasian \_\_\_\_ Latino \_\_\_\_ Asian \_\_\_\_ African American

**Tribal Affiliation:** \_\_\_\_\_ **Enrollment Number:** \_\_\_\_\_

**General Health Status:** \_\_\_\_ Excellent \_\_\_\_ Good \_\_\_\_ Fair \_\_\_\_ Poor\*

**\*If Poor Please List Health Condition:** \_\_\_\_\_

**Do You Currently Have Any of the Following?**

Guardianship \_\_\_\_\_ Power of Attorney for Health \_\_\_\_\_ Power of Attorney for Finances \_\_\_\_\_

Representative Payee for Social Security \_\_\_\_\_ Medicare \_\_\_\_\_ Medicaid \_\_\_\_\_

**In Case of an Emergency Contact:** Name: \_\_\_\_\_

Phone Number: (\_\_\_\_) \_\_\_\_\_

Relationship: \_\_\_\_\_

The above information is correct to the best of my knowledge. Any false statements on any part of the enrollment form are grounds for denial of services. All of the information on the enrollment form is confidential and will not be released to any persons unless I have signed an authorization form for release of information. This enrollment form becomes the property of the Oneida Elder Services.

\_\_\_\_\_/\_\_\_\_/\_\_\_\_

Please Return: Oneida Elder Services Complex  
ATTEN: Service Coordinator  
P.O. Box 365  
Oneida, WI. 54155

