



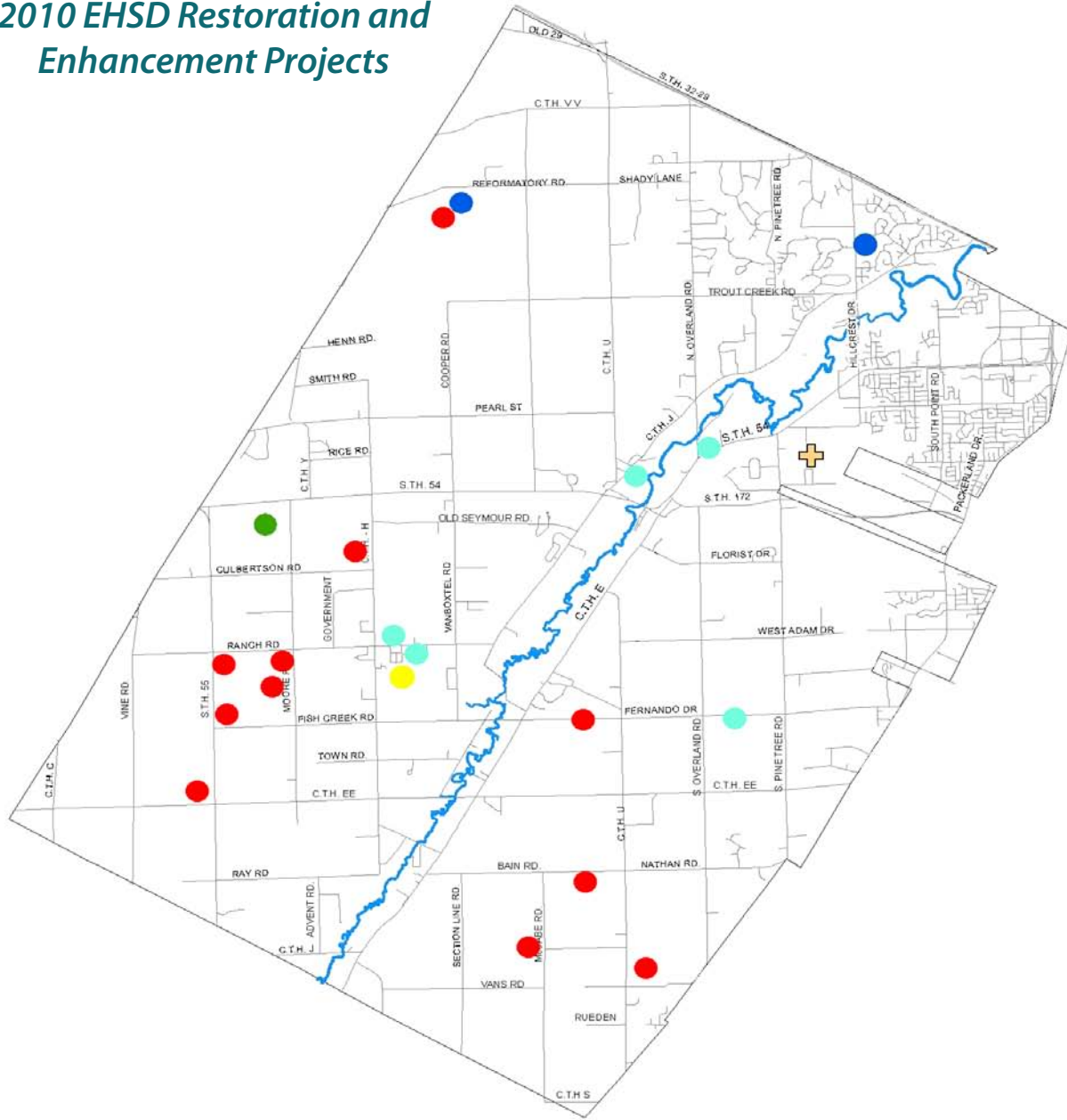
# ENVIRONMENTAL, HEALTH & SAFETY DIVISION FISCAL YEAR 2010 ANNUAL REPORT

Latiwyałtsya?nikú·lale?

*They protect the earth*



## 2010 EHSD Restoration and Enhancement Projects



-  Trails and Improvement Projects
-  Stream Restoration
-  Wind Monitoring Tower
-  Demolition Sites
-  Wetland Enhancement
-  Buffers



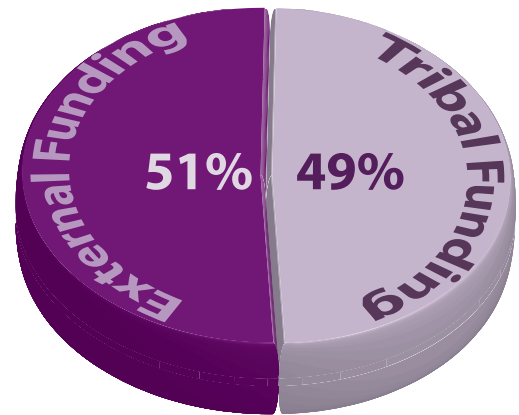
GEOGRAPHIC LAND INFORMATION SYSTEMS  
 N 703 Packerland Drive  
 Green Bay, Wisconsin  
 (920) 496-2007



Source: EH&S Division  
 Coordinate System: Wisconsin State Plane, Central Zone  
 Lambert Projection, U.S. Foot  
 Horizontal Datum: NAD83  
 Vertical Datum: NAV88



## Who Are We ?



*Increase from 43% in FY 2009 to 51% external funding in FY 2010*

## What Do We Do ?

We provide direct environmental and public health services to the community and organization.

We establish sound principles that guide our decision making and ensure the consistent application of knowledge and technology in developing effective operational standards, regulations and enforcement mechanisms that maintain the well being of our community/ employees/visitors, our interests and our environment. We assure compliance with applicable Tribal, Federal, & State laws, policies & regulations to protect the health & well-being of the community and environment.

We protect and restore healthy natural Ecosystems and Parks so that wildlife and aquatic habitats are vibrant and sustainable: and so that the Oneida Community can enjoy and use these natural and outdoor areas in a wide variety of ways.





# Fulfilling our Responsibilities

## People



The “Cora House” park was developed as a showcase to demonstrate the idea of a model park for the community. Conservation issued 784 Sportsman permits, 262 Spring Turkey permits. 68 Healthy Home Assessments were completed. 16 food safety classes were taught to 187 students. 236 community members serviced during the Clean Sweep Event. Managed 111 picnic table rental requests for 915 tables and 15 new table sales requests. 3 healthy cooking classes taught to 59 participants by Oneida Living in Balance Team. 140 Oneida students attended outdoor classes at FallFest.

## Mother Earth



10 underground storage tank compliance assistance services were completed with 100% compliance rates. 5 farmstead buildings and 3 silos were demolished and recycled. Collection of approximately 42,754 pounds of scrap metal, tires, hazardous waste, appliances and electronic waste during the Clean Sweep event (in conjunction with Healthy Homes). Recycling of the stone on the Tribal School.

## Grasses



13 areas along streams were planted with prairie grasses (9.1 miles). 2 buffer areas had maintenance mowing (44 acres).

## Waters



One Lagoon cell at Site 2 restored to a wetland, other cell planned for fishing pond. 2800 brook trout fingerlings were released into Trout Creek. 120 Site visits were made to 13 stream and lake sites to collect water quality samples. Contract to start Lake project completed. A stream habitat improvement project was implemented and completed on Lancaster Brook.





### *Birds*



15 Marsh Bird Surveys conducted according to Wisconsin Marsh Bird Survey protocol at 5 sites. A bald eagle was filmed using a recently installed raptor pole for roosting. Woodland bird community sampling completed.

### *Sun*



Repair and restoration of 12 solar systems built in the mid-90's

### *Winds*



Wind Monitoring tower erected and collecting data to measure feasibility of wind power.

### *Trees*



OCC has provided direct services to over 857 community members and tribal programs. These services include: the removal of 542 community hazardous trees; the processing and delivery of 282 face cords of firewood for elderly heating assistance, sugar camps, and cultural ceremonies; 29 brush chipping assignments; 14 tree transplants; processing/delivery of 489 cubic yards of wood chips used in landscaping, trails, and on landing surfaces (ropes course, playground equipment); and issuance of 77 Wood Cutting Permits

### *Animals*



Small mammal trapping in eight stable habitats. 27 amphibian surveys for calling amphibians at 9 wetlands. Three sites were monitored daily for three weeks to sample for salamanders (three locations; daily checking of traps for 15 days).

### *Medicines*



Revision of the Oneida Culturally Significant Plant book with a new web based format for easier access will be available in 2011.



# Major Accomplishments

## New Outdoor Program



The Oneida Environmental Health & Safety Division began a new outdoor program in 2010. We have partnered with Experiential and Adventures to develop Teyukwahw<syawyanhástu>, meaning “We are all connected or deeply rooted to the earth”. We will be offering outdoor classes at different natural areas on the Oneida Reservation.

Participants will learn culture based environmental education and outdoor skills while being active and getting to know Tribal lands. Classes will highlight our different natural areas and ecosystems, as well as Oneida language and cultural stories!



## COMPLIANCE ASSISTANCE PROGRAM

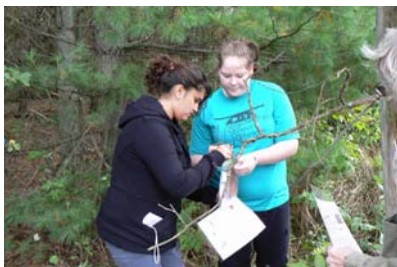
Development of a small informational booklet for UST facilities summarizing federal regulations for the operation and maintenance of UST's was completed this year.

An agreement between the Oneida Tribe and EPA for obtaining federal credentials for a UST inspector.

Oneida's Compliance Assistance Program was recognized by EPA as a successful program for the following reasons:

- Having 100% Significant Operational Compliance rates (national average for Indian Country in 59%);
- Development of training and outreach tools such as a compliance assistance handbook and a newsletter prior to federal requirements for Indian Country.

We also accompanied a federal inspector to conduct UST inspections at Ho-Chunk Nation UST sites.





## Healthy Homes



In December 2009, EHSD became a partner with the Wisconsin Department of Health & Family Services (DHFS) to implement a two year Healthy Homes Program in Oneida. EHSD in turn, partnered with Oneida Housing Authority (OHA) to identify the housing stock necessary to meet the grant requirements. The grant requires that EHSD complete 84 healthy home assessments in year one and 84 in year two. The assessments identify common household hazards, and fix the safety issue. Safety installations or repairs include; outlet covers, non-slip rugs, toilet seat risers, surge protectors, smoke detectors, baby gates, etc. All of the funding is spent on either safety equipment, tools, or outreach efforts. First year outputs are 84 assessments completed, 1,016 Interventions Installed, and 60 people reached through education or outreach.

## Conservation Department

Cora House Park was improved by adding amenities like a volleyball court, chipping green, horse shoe pits, and trail system. Conservation staff also maintained 25 miles of trails, 17 parks and 10 natural areas. Oneida game wardens reported 2836 hours of patrol and 28,609 miles of monitoring activities during Fiscal Year 2010. There were a total of 139 field contacts resulting in 3 citations, 38 warnings, 1 stand confiscation, and 1 tag removal/confiscation.

## Community Wells & Septic



### IHS Project BE-05-C94 On-Site Wastewater Management

In May of 2010 the Project Manager of Community Well & Septic Dept. brought together the combined efforts of Plumbing Dept., Utilities Dept. and Zoning Dept. to evaluate tribal private on-site wastewater treatment systems (POWTS). The purpose of this was to collect data on existing POWTS and set up a data base for yearly maintenance plans. To date over 100 sites have been evaluated, since September 2010. We have requested for an extension on this contract to extend to December 31, 2011.

### IHS Project BE-08-F63 Scattered Sites Project

We served six tribal homes with wells, septic systems, sewer and water laterals under this grant.





## We Have Moved!



**Health & Industrial Services  
Environmental Quality  
Eco-Services  
Community Wells & Septic**

are now located at Little Bear  
Development Center

**(Main Office)**

N7332 Water Circle Place P.O. Box  
365 Oneida, Wisconsin 54155

**(Conservation Office)**

P.O. Box 365 N8047 County Road  
U Oneida, WI 54155

### PROBLEM / QUESTION / OR NEED

### NUMBER

**Environmental at LBDC**

869-4591

**Conservation Department**

869-1450

Bee, ant or other insect problem

869-1450

**Bugs in the House**

869-4558

Climate Change

869-4555

**Diseased or storm damaged trees**

869-1450

Dog or cat license

869-1450

869-4575

**Eco-friendly pesticides or cleaning supplies**

869-4576

Energy efficiency home testing

869-4576

**Firewood Needs**

869-1450

Garbage did not get picked up

497-5806

**Gas, oil, or pesticide spills**

869-4548

Healthy Homes

869-4553

**House or workplace mold or asbestos inspections**

869-4554

Hunter safety training

869-1450

**Hunting and fishing licenses (Oneida)**

869-1450

I got sick after eating at an Oneida restaurant

869-4558

**Illegal burn site identified**

869-1450

Illegal dumping

869-4548

**Illegal poaching or trespass**

869-1450

Lake Project information

869-4571

**Lead based paint**

869-4555

Live, Sustain, Grow Project

496-5362

**Mold - indoor**

869-4554

NEPA paperwork needs

869-4569

**Outdoor air quality**

869-4555

Picnic tables for an event

869-1450

**Rabies:Pet Safety Program-(tag numbers, pet status, etc.)**

869-4558

869-4575

Recycle: bins, oil, appliances, etc.

869-4549

**Renewable Energy Project**

869-4572

Strange bug, frog, bird, etc. in my yard

869-4569

**Strange weed in my lawn**

869-4592

Stream dumping or runoff concerns

869-4589

**Vicious or stray dog needs to be removed**

869-2239

Walking trail or natural area information

869-1450

**Well, septic or plumbing problems or needs**

869-4578

Well/home/pond water testing

869-4578

**Wild animal living under my porch**

869-1450

Workplace smells or smoky environments

869-4554