

# Wisconsin DOT Oneida Wetland Mitigation Fact Sheet



Farmed wetland located on the tribal portion of the Mitigation Bank

**Wetland Mitigation:** *Mitigation is a Federal, State and Tribal regulatory procedure that involves the restoration of wetlands for the purpose of compensating unavoidable wetland loss associated with projects.*

## Background

- Wetland Mitigation is required for wetland filling associated with DOT Highway improvement projects.
- The DOT reviewed several areas on and off the reservation for suitability.
- The Oneida location was selected over seven other sites because of its size and high potential for success.
- The project area is located south of Shady Drive and East of County Highway U, in Brown County.
- The project is 74 acres in size.
- The Oneida Nation owns 36.5 of the acres and the DOT owns the adjacent 37.5 acres

**Schedule:** June 29, 2015 to October 31, 2015

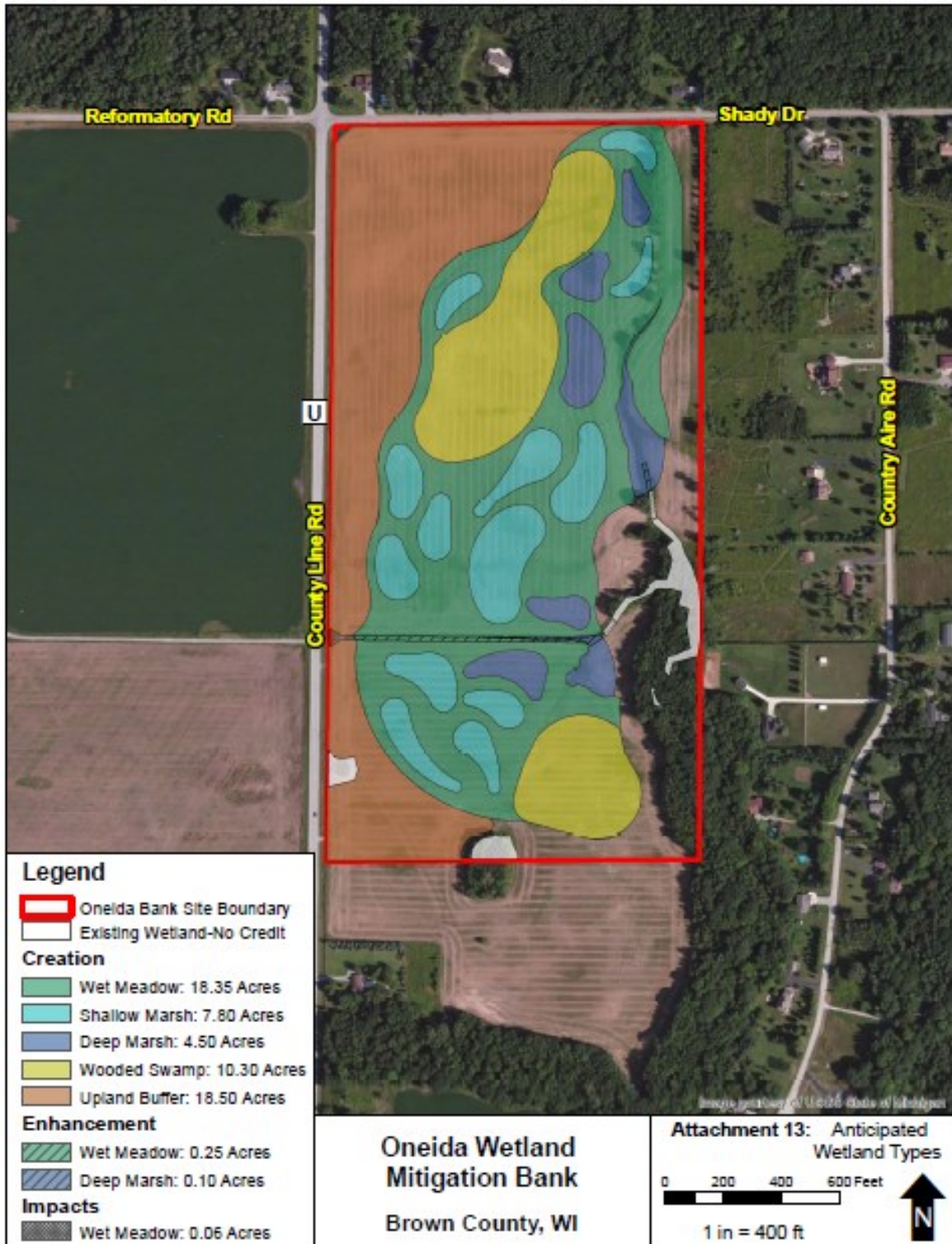
**Description:** Work consists of the construction of a wetland mitigation bank. Work includes grading, installing water control structures, landscaping, and tree and wetland plantings.

**Traffic Impacts:** The project is not expected to affect traffic.

## Upon Completion of the Construction Phase

- 10 years of monitoring and maintenance by the DOT
- Ownership transferred to Oneida at the end of the 10 year monitoring period.

## Wetland Mitigation Bank Conceptual Design



The conceptual design provides 5 different habitat types that will attract a diversity of wildlife. Game species will benefit from this “refuge” being directly connected to the Trout Creek corridor. Nongame species such as amphibians, songbirds, and pollinating insects will also flourish in the restored habitats. The wet meadow and upland buffer areas will provide opportunities for community members to gather medicinal plants such as Number 6. The quality of the water entering Trout Creek will improve from the ability of restored wetlands to remove sediments and nutrients.